



Connells

Eynham Avenue
Southampton



Property Description

Occupying a generous plot, this spacious three-bedroom detached home offers an excellent opportunity for buyers looking to create their ideal family home. With large front and rear gardens, a substantial driveway providing ample off-road parking, and a garage, the property boasts fantastic outdoor space and endless potential.

Inside, the home offers well-proportioned accommodation throughout and, although it would benefit from modernisation, it provides the perfect blank canvas to put your own stamp on. The ground floor comprises a bright and spacious lounge featuring a large bay window, a separate dining room ideal for family meals and entertaining, and a generously sized kitchen with plenty of scope for redesign.

Upstairs, there are three good-sized bedrooms and a family bathroom, making it an ideal home for growing families. Offering excellent living space, a superb plot, and huge potential to improve and add value, this is a fantastic opportunity not to be missed.

Agent Notes

'The sale of this property is subject to grant of probate. Please seek an update from the branch with regards to the potential time frames involved.'

Entrance Hall

Gas central heating radiator.

Lounge

Double glazed bay window to front aspect.
Double glazed window to side aspect. X 2
Gas central heating radiator.

Dining Room

Double glazed bay window to side aspect.
Double glazed French doors to garden. Gas central heating radiator.

Kitchen

Double glazed window to side and rear aspect. Wall and base units. Sink and drainer. Space for oven, washing machine and fridge/freezer. X 2 Gas central heating radiators.

Landing

Double glazed window to side aspect.

Bedroom 1

Double glazed bay window to front aspect.
Double glazed window to side aspect. Gas central heating radiator.

Bedroom 2

Double glazed window to rear aspect. Gas central heating radiator.

Bedroom 3

Double glazed window to rear aspect. Gas central heating radiator.

Bathroom

Double glazed window to front aspect. Bath with electric shower. WC. Wash hand basin. Gas central heating radiator.

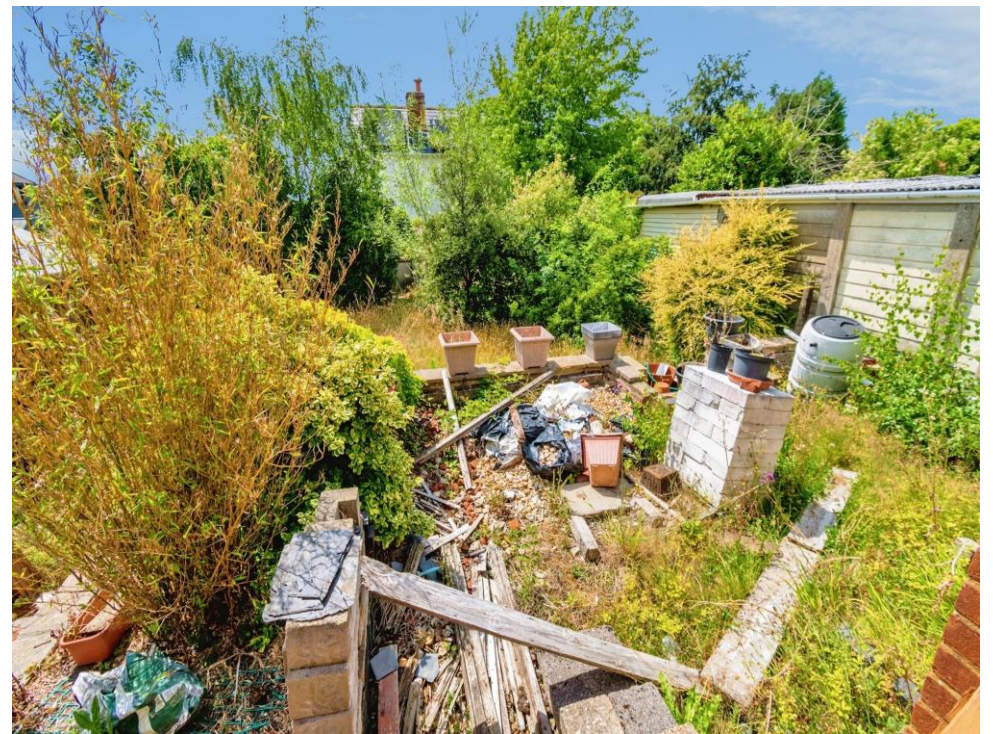
Outside

Large front and back garden. Garage with driveway.

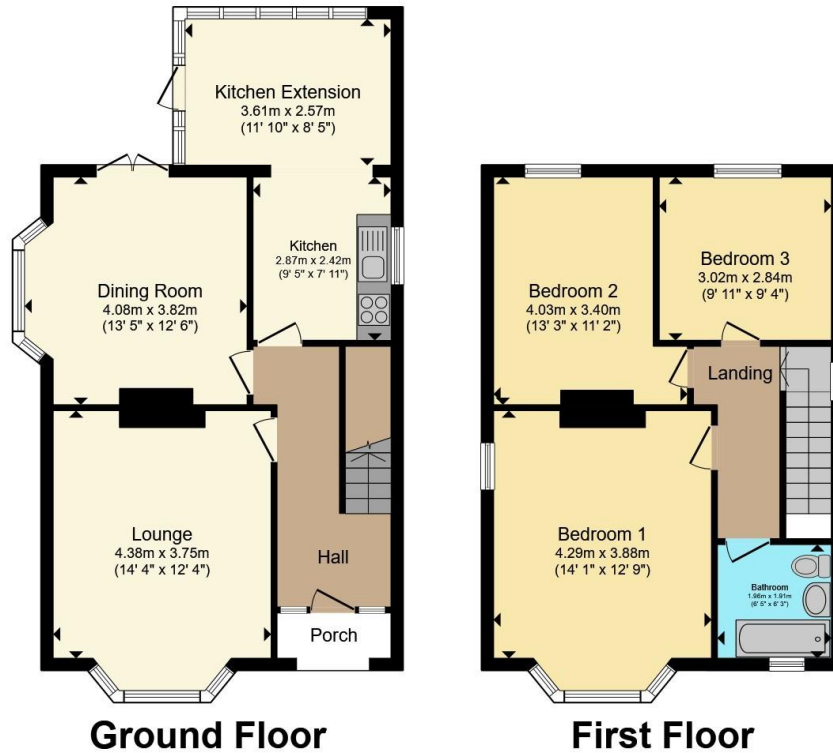
Key Features

- Three-bedroom detached home
- Generous plot
- Large front and rear gardens
- Driveway with garage
- Spacious lounge with bay window
- Separate dining room
- Large kitchen
- Fantastic potential to modernise and add value









Total floor area 111.4 m² (1,199 sq.ft.) approx

This floor plan is for illustrative purposes only. It is not drawn to scale. Any measurements, floor areas (including any total floor area), openings and orientation are approximate. No details are guaranteed, they cannot be relied upon for any purpose and they do not form part of any agreement. No liability is taken for any error, omission or misstatement. A party must rely upon its own inspection(s). Powered by www.propertybox.io

Connells

To view this property please contact Connells on

T 02380 422080
E Bitterne@connells.co.uk

2 West End Road Bitterne
 SOUTHAMPTON SO18 6TG

EPC Rating:
 Awaited

Council Tax
 Band: D

Service Charge: Ask
 Agent

Ground Rent:
 Ask Agent

Tenure: Leasehold

view this property online connells.co.uk/Property/BTN107791

This is a Leasehold property. We are awaiting further details about the Term of the lease. For further information please contact the branch. Please note additional fees could be incurred for items such as Leasehold packs.



1. MONEY LAUNDERING REGULATIONS Intending purchasers will be asked to produce identification documentation at a later stage and we would ask for your co-operation in order that there will be no delay in agreeing the sale. 2. These particulars do not constitute part or all of an offer or contract. 3. The measurements indicated are supplied for guidance only and as such must be considered incorrect. Potential buyers are advised to recheck measurements before committing to any expense. 4. We have not tested any apparatus, equipment, fixtures, fittings or services and it is in the buyers interest to check the working condition of any appliances.

Connells Residential is registered in England and Wales under company number 1489613, Registered Office is Cumbria House, 16-20 Hockliffe Street, Leighton Buzzard, Bedfordshire, LU7 1GN. VAT Registration Number is 500 2481 05.

See all our properties at www.connells.co.uk | www.rightmove.co.uk | www.zoopla.co.uk

Property Ref: BTN107791 - 0005