



President Drive, E1W

£995,000

 3  1  2  C

- Three Bedroom House
- Garden
- West Wapping

- Renovated Throughout
- Parking Space
- Chain Free



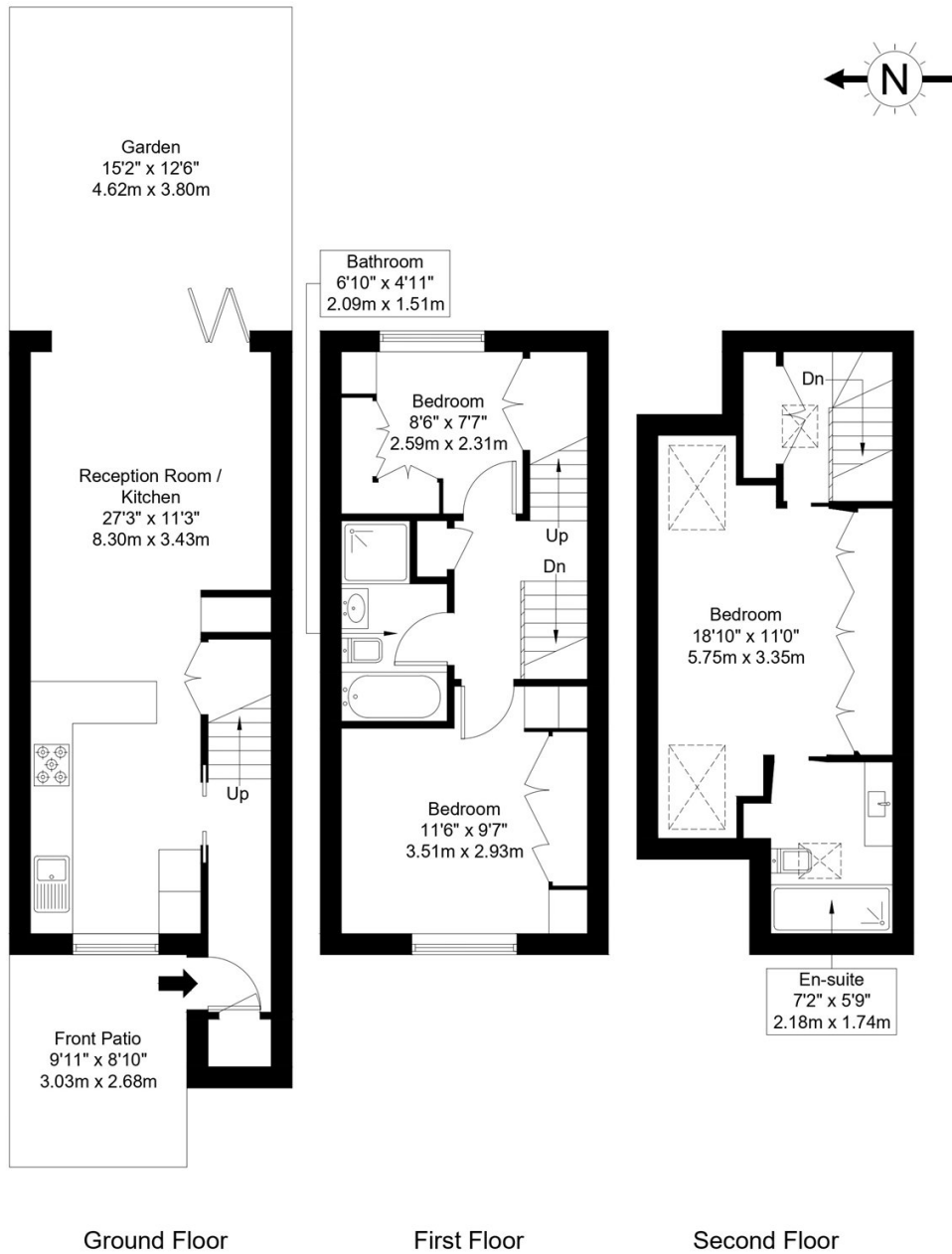
We are pleased to present this immaculate three bedroom house in West Wapping. The property has been renovated to a very high standard and benefits from Japanese toilets in both bathrooms, a bright open-plan kitchen living area, front patio and a private garden. It is in a gated community within walking distance to local amenities, pubs and parks.

Ideally situated in West Wapping, the property is within close proximity to Wapping and Tower Hill Stations, with local bus routes offering easy access to Canary Wharf, the City, London Bridge, and Shoreditch. Located approximately 0.7 Miles from picturesque St Katharine's Docks that offers a wide selection of pubs, bars, restaurants, and cafes.



President Drive, E1W 2JH

Approx Gross Internal Area = 84.3 sq m / 907 sq ft



Ref :

Copyright **BLEU PLAN**

The Floor plan is not to scale and measurements and areas shown are approximate and therefore should be used for illustrative purposes only. The plan has been prepared in accordance with the RICS code of Measuring Practice and whilst we have confidence in the information produced it must not be relied on. Maximum lengths and widths are represented on the floor plan. If there is any aspect of particular importance, you should carry out or commission your own inspection of the property.
Copyright @ BleuPlan

35A Wapping High Street,
London, E1W 1NR
020 7665 5589
ea2group.com



Energy Rating: C We aim to make our particulars both accurate and reliable. However they are not guaranteed; nor do they form part of an offer or contract. If you require clarification on any points then please contact us, especially if you're travelling some distance to view. Please note that appliances and heating systems have not been tested and therefore no warranties can be given as to their good working order.