



Sutton Road, Walpole Cross Keys, King's Lynn, PE34 4HE

welcome to

Sutton Road, Walpole Cross Keys, King's Lynn

Beautifully presented and fully renovated three bedroom end terrace home featuring a bright, modern open plan kitchen/lounge/diner, stylish utility, and contemporary finishes throughout. With driveway parking, double garage, and a generous rear garden enjoying field views. Viewing highly recommended



Lounge

Front Door, Double Glazed Window to Front, Log Burner, Radiator, Storage Cupboard

Kitchen/Diner

Wall and Base Units, Integrated Dishwasher, Integrated Oven and Grill, Sink and Mixer Tap, Island with Integrated Induction Hob, Skylight, Double Glazed Patio Doors to Rear, Radiator, Archway to;

Utility Room

Base Units, Integrated Fridge/Freezer, Double Glazed Window to Rear, Double Glazed Door to Side, Radiator

Cloakroom

WC, Hand Wash Basin, Double Glazed Window

Bedroom One

Double Glazed Window to Front, Radiator

Bedroom Two

Double Glazed Window to Front, Built in Wardrobe, Radiator

Bedroom Three

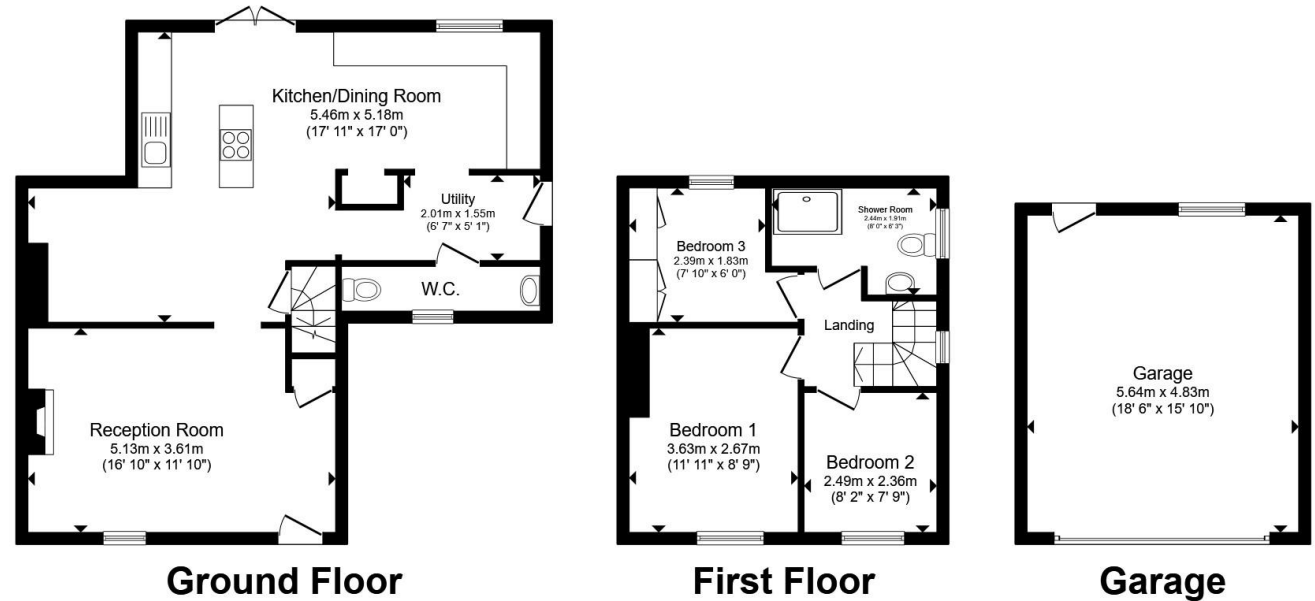
Double Glazed Window to Rear, Built in Wardrobe, Radiator

Shower Room

Shower, WC, Hand Wash Basin, Double Glazed Window to Side

Outside

Ample Driveway Parking, Double Garage with Electric Door and Personnel Door and Window to Rear. Rear Garden with Patio Area and Remainder Laid to Lawn with Field Views.



Total floor area 121.9 m² (1,312 sq.ft.) approx

This floor plan is for illustrative purposes only. It is not drawn to scale. Any measurements, floor areas (including any total floor area), openings and orientation are approximate. No details are guaranteed, they cannot be relied upon for any purpose and they do not form part of any agreement. No liability is taken for any error, omission or misstatement. A party must rely upon its own inspection(s). Powered by www.propertybox.io



check out more properties at williamhbrown.co.uk



welcome to

Sutton Road, Walpole Cross Keys, King's Lynn

- Three Bedroom End Terrace Home
- Beautifully Renovated Throughout
- Modern Open Plan Kitchen/Lounge/Diner
- Bright and Airy Living Space
- Stylish Utility Room

Tenure: Freehold EPC Rating: E

Council Tax Band: A

£270,000



Please note the marker reflects the postcode not the actual property

check out more properties at williamhbrown.co.uk



Property Ref:
KLN119430 - 0004

1. MONEY LAUNDERING REGULATIONS Intending purchasers will be asked to produce identification documentation at a later stage and we would ask for your co-operation in order that there is no delay in agreeing the sale. 2. These particulars do not constitute part or all of an offer or contract. 3. The measurements indicated are supplied for guidance only and as such must be considered incorrect. Potential buyers are advised to recheck measurements before committing to any expense. 4. We have not tested any apparatus, equipment, fixtures or services and it is in the buyers interest to check the working condition of any appliances. 5. Where an EPC, or a Home Report (Scotland only) is held for this property, it is available for inspection at the branch by appointment. If you require a printed version of a Home Report, you will need to pay a reasonable production charge reflecting printing and other costs. 6. We are not able to offer an opinion either written or verbal on the content of these reports and this must be obtained from your legal representative. 7. Whilst we take care in preparing these reports, a buyer should ensure that his/her legal representative confirms as soon as possible all matters relating to title including the extent and boundaries of the property and other important matters before exchange of contracts.

William H Brown is a trading name of Sequence (UK) Limited which is registered in England and Wales under company number 4268443, Registered Office is Cumbria House, 16-20 Hockliffe Street, Leighton Buzzard, Bedfordshire, LU7 1GN. VAT Registration Number is 500 2481 05.



01553 771337



KingsLynn@williamhbrown.co.uk



40-42 King Street, KING'S LYNN, Norfolk, PE30 1ES



williamhbrown.co.uk