



Coopers

Coopers

Benedictine Road, Cheylesmore, Coventry CV3 6GW

Guide Price £285,000



Benedictine Road

Cheylesmore, Coventry

Looking for a three bedroom end terrace with mature garden and parking near War Memorial Park? This well-positioned home offers 2 reception rooms and established outdoor space close to all amenities.

Council Tax band: C

Tenure: Freehold

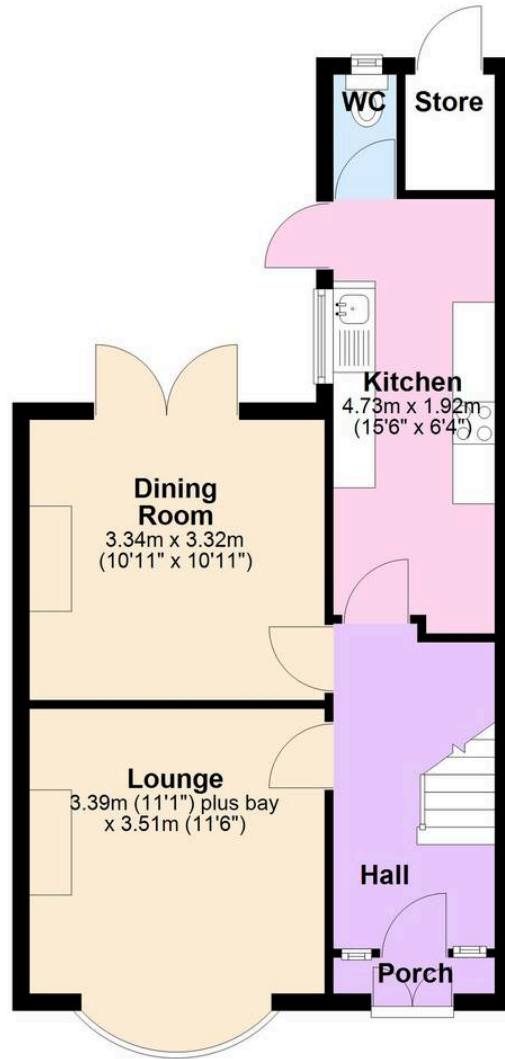
EPC Energy Efficiency Rating: E

- Three bedroom end terrace property on Benedictine Road
- Two separate reception rooms providing flexible living space
- First floor family bathroom serving all bedrooms
- Downstairs toilet for practical convenience
- Mature rear garden with roses, shrubs and wildflowers
- Rear vehicular access with space for parking
- Walking distance to War Memorial Park and local shops
- Close proximity to Coventry train station for commuters

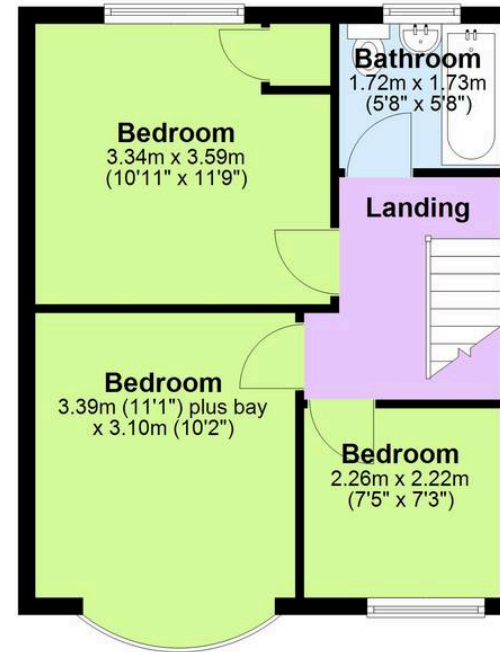




Ground Floor



First Floor



Total area: approx. 83.3 sq. metres (896.4 sq. feet)

Coopers Estate Agents

Coopers, 22 New Union Street - CV1 2HN



024 7655 2841 • sales@coopersestateagents.com • www.coopersestateagents.com/

Coopers Chartered Surveyors Ltd, 22 New Union Street, Coventry, West Midlands

CV1 2HN, 024 7655 2841, sales@coopers-cov.com. Company Registration

Number: 6725089 / VAT number: 940 3555 34