



Tower Point, Sydney Road, Enfield, EN2 6SZ

welcome to

Tower Point, Sydney Road, Enfield

Barnfields are delighted to offer for sale this superb two bedroom two bathroom first floor apartment with South facing terrace in the heart of Enfield Town's Conservation Area and within close proximity of good schools, shopping centre, rail stations both (Enfield Town and Enfield Chase), Enfield Town Park and both the A10 and the M25 Motorway.

This chain free property is located above the Nuffield Gym and must be viewed to be fully appreciated!





Communal Entrance Hall

With concierge and lift access to all floors.

Flat Door

Opens to:-

Hallway

Laminate flooring, large storage cupboard.

Lounge / Kitchen

18' 6" x 14' 6" (5.64m x 4.42m)

Wood flooring, tilt and slide patio doors to terrace, spotlights, open to kitchen area with:-

Range of fitted wall and base units, granite worktops, undermount sink, tiled splashbacks, electric hob with extractor above, stainless steel splashback and oven beneath, plumbing for washing machine and dishwasher, space for a fridge/freezer, tiled floor, spotlights.

Terrace

An approximately 30ft wide South facing decked terrace accessed from both the lounge and Bedroom One.

Bedroom One

11' 9" x 11' 5" (3.58m x 3.48m)

Laminate flooring, double glazed tilt and slide doors to terrace, built-in wardrobes, door to:-

En-Suite

Tiled panelled bath with shower above and glass screen, pedestal wash hand basin, WC, tiled floor, two large inset mirrors, part tiled walls spotlights, heated towel rail..

Bedroom Two

10' 8" x 9' 8" (3.25m x 2.95m)

Laminate flooring, double glazed windows to front, built-in wardrobes.

Bathroom

Tiled panelled bath with shower above and glass screen, pedestal wash hand basin, WC, tiled floor, two large inset mirrors, part tiled walls spotlight, heated towel rail, spotlights.

Parking

The property benefits from a secure allocated parking space to the rear of the block.



view this property online barnfields.co.uk/Property/ENF105980





welcome to

Tower Point, Sydney Road, Enfield

- Two Double Bedrooms
- Two Bathrooms
- First Floor
- South Facing Terrace
- Close To Enfield Town Shopping Centre

Tenure: Leasehold EPC Rating: Awaiting

Council Tax Band: E Service Charge: 4000.00

Ground Rent: 275.00

This is a Leasehold property with details as follows; Term of Lease 125 years from 25 Mar 2000. Should you require further information please contact the branch. Please Note additional fees could be incurred for items such as Leasehold packs.

£340,000



Please note the marker reflects the postcode not the actual property

check out more properties at [barnfields.co.uk](https://www.barnfields.co.uk)



Property Ref:
ENF105980 - 0002

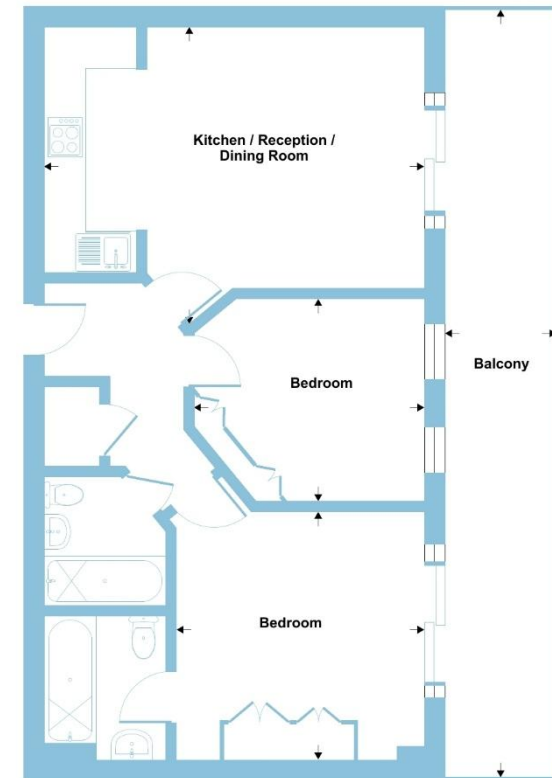
1. MONEY LAUNDERING REGULATIONS Intending purchasers will be asked to produce identification documentation at a later stage and we would ask for your co-operation in order that there is no delay in agreeing the sale. 2. These particulars do not constitute part or all of an offer or contract. 3. The measurements indicated are supplied for guidance only and as such must be considered incorrect. Potential buyers are advised to recheck measurements before committing to any expense. 4. We have not tested any apparatus, equipment, fixtures or services and it is in the buyers interest to check the working condition of any appliances. 5. Where an EPC, or a Home Report (Scotland only) is held for this property, it is available for inspection at the branch by appointment. If you require a printed version of a Home Report, you will need to pay a reasonable production charge reflecting printing and other costs. 6. We are not able to offer an opinion either written or verbal on the content of these reports and this must be obtained from your legal representative. 7. Whilst we take care in preparing these reports, a buyer should ensure that his/her legal representative confirms as soon as possible all matters relating to title including the extent and boundaries of the property and other important matters before exchange of contracts.

Barnfields is a trading name of Sequence (UK) Limited which is registered in England and Wales under company number 4268443, Registered Office is Cumbria House, 16-20 Hockliffe Street, Leighton Buzzard, Bedfordshire, LU7 1GN. VAT Registration Number is 500 2481 05.

Sydney Road, Enfield, EN2

Approximate Area = 636 sq ft / 59 sq m

For identification only - Not to scale



FIRST FLOOR

Floor plan produced in accordance with RICS Property Measurement 2nd Edition, Incorporating International Property Measurement Standards (IPMS2 Residential). © nichecom 2026. Produced for Barnard Marcus. REF: 1483639



020 8363 3394



info@barnfields.com



1a Windmill Hill, Enfield, Middlesex, EN2 6SE



[barnfields.co.uk](https://www.barnfields.co.uk)