



Holland Street, offers in excess of £250,000

- Four-Bedroom
- Beautifully presented
- Mid-Terrace
- Driveway
- Sought-After Location
- EPC Rating: Awaited



 4  1  2



About the property

This beautifully presented property has been modernised throughout to create a stylish and comfortable home, ideal for families and professionals alike. Offering spacious and versatile accommodation, the property is ready for immediate occupation and has been finished to a high standard.

The ground floor features two well-proportioned reception rooms, providing flexible living and dining spaces that are perfect for both everyday family life and entertaining guests. The modern décor and abundance of natural light create a bright and welcoming atmosphere throughout the home. The well-appointed kitchen has been thoughtfully updated, offering a practical and attractive space with ample storage and workspace.

Upstairs, the property continues to impress with generously sized bedrooms and a contemporary family bathroom, all presented in excellent condition. The high-quality finish throughout allows prospective purchasers to move straight in with minimal effort.

Externally, the property benefits from an enclosed rear garden, providing an ideal space for relaxing and outdoor entertaining. A particular feature is the driveway to the rear, offering valuable off-road parking and added convenience.

Situated close to local amenities, schools and transport links, this attractive home combines modern living with practicality. With its excellent presentation, two reception rooms and rear driveway, early viewing is highly recommended to fully appreciate everything this property has to offer.



Accommodation

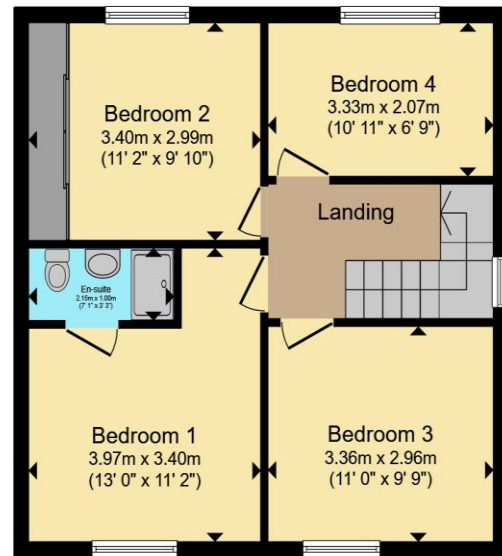
01495360922

ebbwwale@peteralan.co.uk

Floorplan



Ground Floor



First Floor

Total floor area 99.9 m² (1,075 sq.ft.) approx

This floor plan is for illustrative purposes only. It is not drawn to scale. Any measurements, floor areas (including any total floor area), openings and orientation are approximate. No details are guaranteed, they cannot be relied upon for any purpose and they do not form part of any agreement. No liability is taken for any error, omission or misstatement. A party must rely upon its own inspection(s). Powered by www.propertybox.io



Important Information

Note while we endeavour to make our sales details accurate and reliable, if there is any point which is of particular interest to you, please contact the office and we will be pleased to confirm the position for you. We have not personally tested any apparatus, equipment, fixtures, fittings or services and cannot verify they are in working order or fit for their purposes. Nothing in these particulars is intended to indicate that carpets or curtains, furnishings or fittings, electrical goods (whether wired or not). Gas fires or light fittings or any other fixtures not expressly included form part of the property offered for sale. This computer generated Floorplan, if applicable, is intended as a general guide to the layout and design of the property. It is not to scale and should not be relied upon for dimensions. Tenure: We cannot confirm the tenure of the property as we have not had access to the legal documents. The buyer is advised to obtain verification from their solicitor or surveyor.

Peter Alan Limited is registered in England and Wales under company number 2073153. Registered Office is Cumbria House, 16-20 Hockliffe Street, Leighton Buzzard, Bedfordshire, LU7 1GN. VAT Registration Number is 500 2481 05. For activities relating to regulated mortgages and non-investment insurance contracts, Peter Alan Limited is an appointed representative of Connells Limited which is authorised and regulated by the Financial Conduct Authority. Connells Limited's Financial Services Register number is 302221. Most buy-to-let

