



Pinkmove

Russborough Villa, Leigh Road

Offers over £645,000

- Three Reception Rooms
- 5 Bedrooms
- Secure Gated Driveway
- Stunning Views and Garden
- Grade 2 Listed Building
- EPC Rating: D



5 3 3

Pinkmove

01633 746088
team@pinkmove.co.uk



About the property

This exceptional and beautifully presented property offers an outstanding combination of space, elegance, and modern living.

The home benefits from double glazing and gas central heating throughout, while secure electric gates open onto a generous driveway providing ample off-road parking, in addition to a detached garage.

Internally, the accommodation is both spacious and versatile. The ground floor comprises a grand and welcoming reception hallway, three well-proportioned reception rooms, a designated dining area, a bespoke fitted kitchen, a utility room, and a convenient WC.

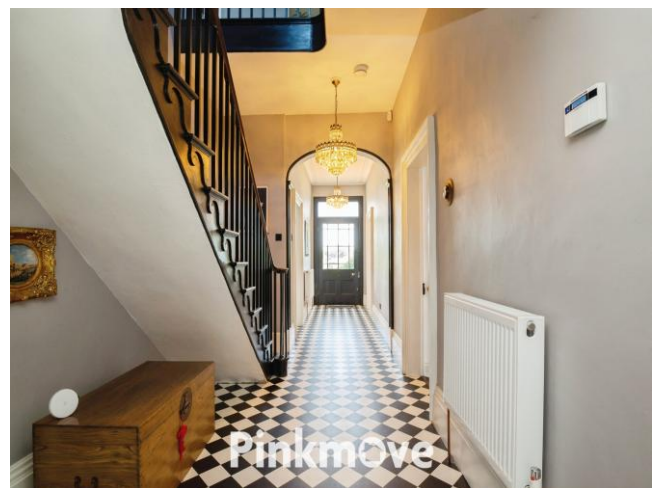
This exceptional property combines space, elegance, and modern living.

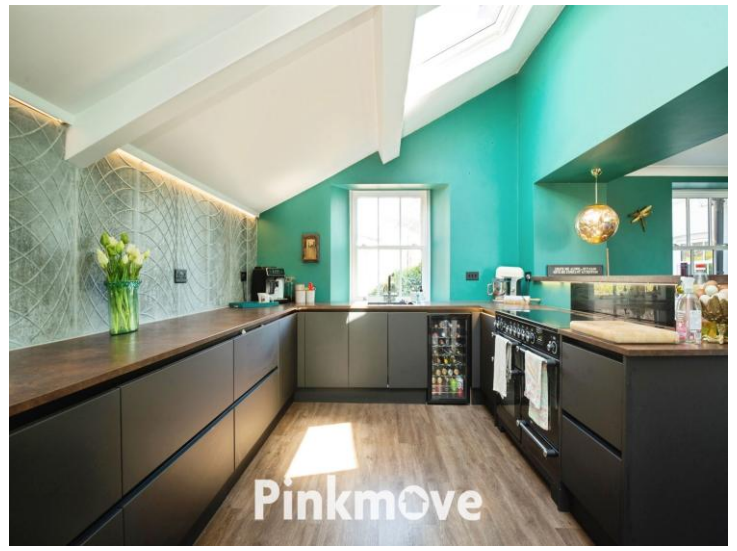
Featuring double glazing and gas central heating throughout, it offers secure electric gate access to a generous driveway with ample off-road parking and a detached garage.

The ground floor comprises a grand reception hallway, three reception rooms, a dining area, bespoke fitted kitchen, utility room, and WC. The first floor offers five super-king bedrooms, including a principal suite with dressing area and en-suite, a guest suite with en-suite, and additional bathrooms including a Jack-and-Jill.

Externally, extensive lawned gardens and Indian stone terraces provide ideal outdoor space with stunning countryside views.

Located in Trevethin, Pontypool, close to local amenities, schools, transport links, and the M4.





Accommodation

Living Room

Lounge

Dining Room

Wc

Utility

Kitchen/Dining Room

Bedroom 1

En-Suite

Bedroom 2

Bedroom 3

Bedroom 4

Bedroom 5

Bathroom

Shower Room

Floorplan



Total floor area 260.6 sq.m. (2,806 sq.ft.) approx

This floor plan is for illustrative purposes only. It is not drawn to scale. Any measurements, floor areas (including any total floor area), openings and orientation are approximate. No details are guaranteed, they cannot be relied upon for any purpose and they do not form part of any agreement. No liability is taken for any error, omission or misstatement. A party must rely upon its own inspection(s). Powered by www.focalagent.com

Important Information

Note while we endeavour to make our sales details accurate and reliable, if there is any point which is of particular interest to you, please contact the office and we will be pleased to confirm the position for you. We have not personally tested any apparatus, equipment, fixtures, fittings or services and cannot verify they are in working order or fit for their purposes. Nothing in these particulars is intended to indicate that carpets or curtains, furnishings or fittings, electrical goods (whether wired or not). Gas fires or light fittings or any other fixtures not expressly included form part of the property offered for sale. This computer generated Floorplan, if applicable, is intended as a general guide to the layout and design of the property. It is not to scale and should not be relied upon for dimensions. Tenure: We cannot confirm the tenure of the property as we have not had access to the legal documents. The buyer is advised to obtain verification from their solicitor or surveyor.

Peter Alan Limited is registered in England and Wales under company number 2073153, Registered Office is Cumbria House, 16-20 Hockliffe Street, Leighton Buzzard, Bedfordshire, LU7 1GN. VAT Registration Number is 500 2481 05. For activities relating to regulated mortgages and non-investment insurance contracts, Peter Alan Limited is an appointed representative of Connells Limited which is authorised and regulated by the Financial Conduct Authority. Connells Limited's Financial Services Register number is 302221. Most buy-to-let

