



Flat 4 Regatta Place, 55 Kingfisher Drive, Maidenhead SL6 8FH

welcome to

Flat 4 Regatta Place, 55 Kingfisher Drive, Maidenhead

A well presented two bedroom, two bathroom top floor apartment situated within the highly sought after Boulders Meadow development, offered to the market with no onward chain.

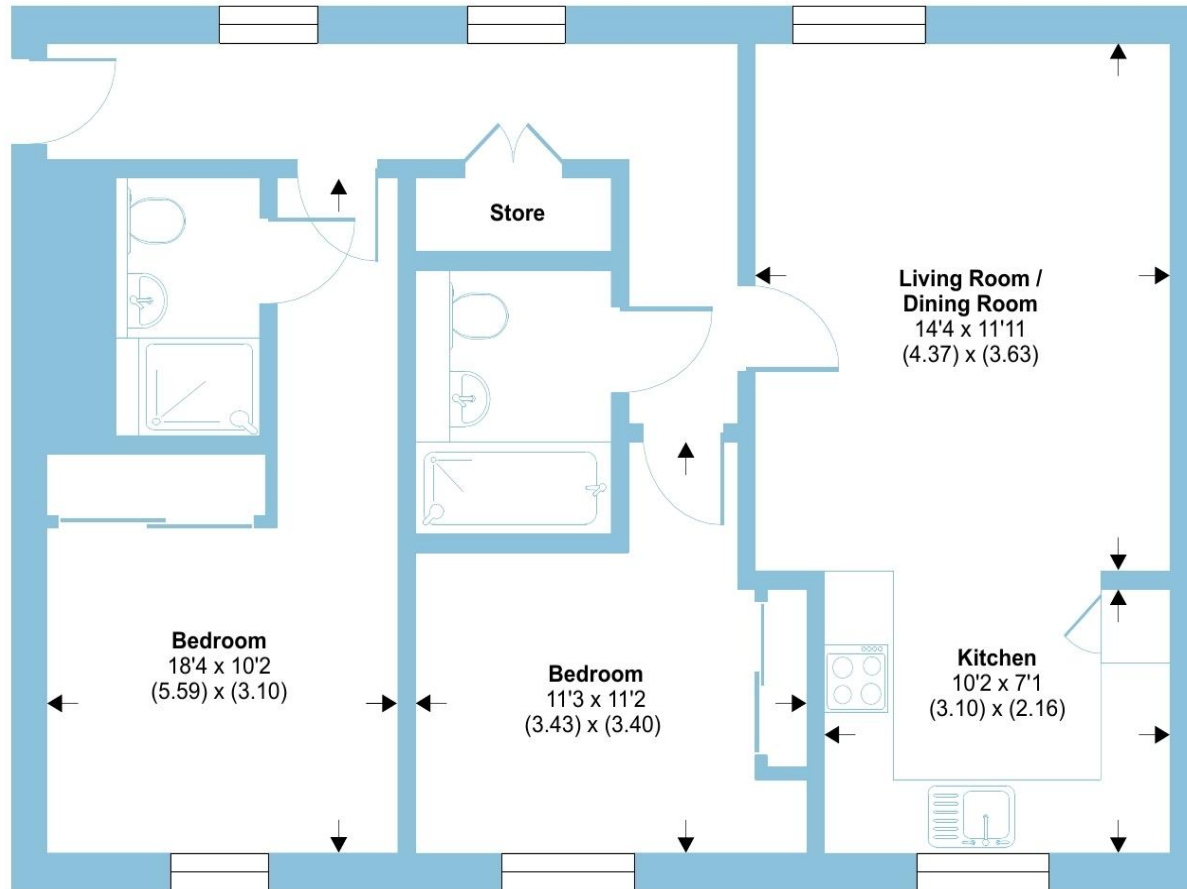




Kingfisher Drive, Maidenhead, SL6

Approximate Area = 699 sq ft / 64.9 sq m

For identification only - Not to scale



SECOND FLOOR

The property features a spacious and bright living room, providing an ideal space for both relaxation and entertaining. The modern fitted kitchen is thoughtfully designed and benefits from a range of units, work surfaces, and some integrated appliances.

The main bedroom is a generous double room, complete with a built-in double wardrobe and a contemporary en suite shower room. A second well-proportioned bedroom offers flexibility for guests, a home office, or family use, and is served by a stylish, modern family bathroom.

Externally, the property benefits from allocated residents' parking and well maintained communal areas.

The development is conveniently located with easy access to the town centre, mainline railway station, and the Elizabeth Line, making it ideal for commuters.

Additionally, the property is positioned close to a variety of highly regarded local schools and everyday amenities, making it a superb choice for both first-time buyers and investors alike.

welcome to

Flat 4 Regatta Place, 55 Kingfisher Drive

- TOP FLOOR APARTMENT
- TWO BEDROOMS
- TWO BATHROOMS
- MODERN KITCHEN
- ALLOCATED RESIDENTS PARKING
- EASY ACCESS TO TOWN CENTRE & STATIONS
- CLOSE TO LOCAL SCHOOLS
- NO ONWARD CHAIN

Tenure: Leasehold EPC Rating: C

Council Tax Band: D Service Charge: 2498.78

Ground Rent: 400.00

This is a Leasehold property with details as follows; Term of Lease 99 years from 01 May 2013. Should you require further information please contact the branch. Please Note additional fees could be incurred for items such as Leasehold packs.

£295,000



Please note the marker reflects the postcode not the actual property

check out more properties at rogerplatt.co.uk



Property Ref:
MHD123863 - 0001

1. MONEY LAUNDERING REGULATIONS Intending purchasers will be asked to produce identification documentation at a later stage and we would ask for your co-operation in order that there is no delay in agreeing the sale. 2. These particulars do not constitute part or all of an offer or contract. 3. The measurements indicated are supplied for guidance only and as such must be considered incorrect. Potential buyers are advised to recheck measurements before committing to any expense. 4. We have not tested any apparatus, equipment, fixtures or services and it is in the buyers interest to check the working condition of any appliances. 5. Where an EPC, or a Home Report (Scotland only) is held for this property, it is available for inspection at the branch by appointment. If you require a printed version of a Home Report, you will need to pay a reasonable production charge reflecting printing and other costs. 6. We are not able to offer an opinion either written or verbal on the content of these reports and this must be obtained from your legal representative. 7. Whilst we take care in preparing these reports, a buyer should ensure that his/her legal representative confirms as soon as possible all matters relating to title including the extent and boundaries of the property and other important matters before exchange of contracts.

Roger Platt is a trading name of Sequence (UK) Limited which is registered in England and Wales under company number 4268443, Registered Office is Cumbria House, 16-20 Hockliffe Street, Leighton Buzzard, Bedfordshire, LU7 1GN. VAT Registration Number is 500 2481 05.

roger platt



01628 773333



Maidenhead@rogerplatt.co.uk



25-29 Queen Street, MAIDENHEAD, Berkshire,
SL6 1NB



rogerplatt.co.uk