



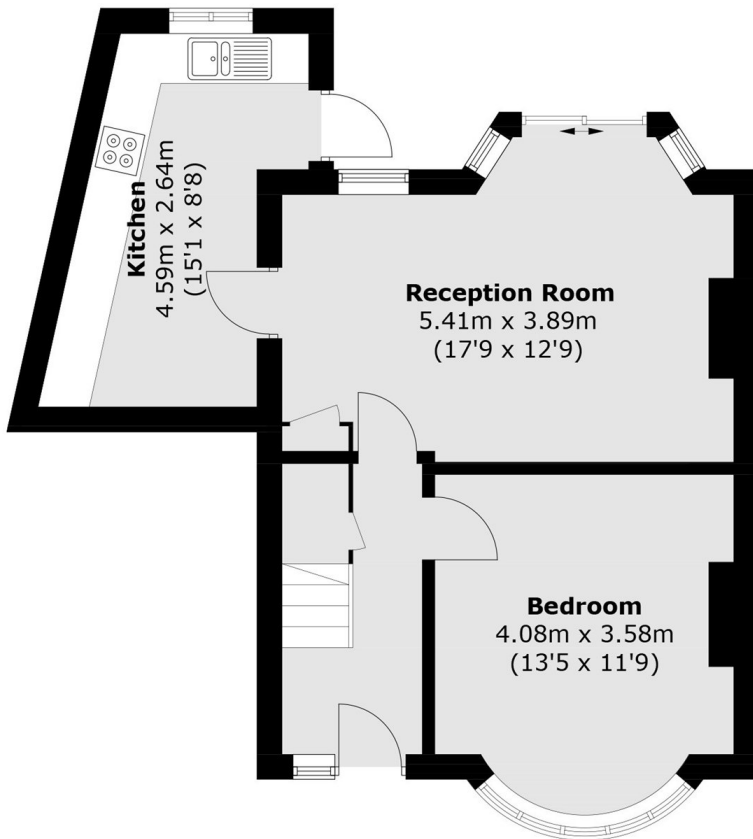
Southdown Crescent, HA2

£415,000

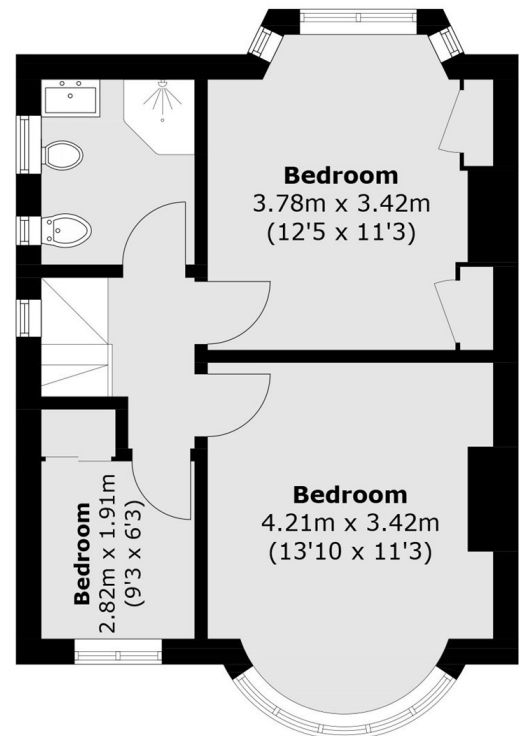
Being Sold via Secure Sale online bidding. Terms & Conditions apply. Starting Bid £415,000. This three bedroom property features a bay fronted reception room, fitted kitchen and a rear reception/dining room with direct garden access,

Southdown Crescent is conveniently located for the shopping and transport facilities of South Harrow and Harrow-on-the-Hill, offering direct routes into Central London, along with well regarded schools and local amenities nearby.

- Three Bedrooms • Private Garden • Garage •
- Driveway For Two Cars • Conveniently Located • Auction Guide Price •



Ground Floor



First Floor

Total area (approx.): 89.9 sq. m (967.7 sq. ft)

David Conway
020 8422 5222

Energy Rating: D We aim to make our particulars both accurate and reliable. However they are not guaranteed; nor do they form part of an offer or contract. If you require clarification on any points then please contact us, especially if you're travelling some distance to view. Please note that appliances and heating systems have not been tested and therefore no warranties can be given as to their good working order.