



Connells

Tout Hill
Shaftesbury



Property Description

A charming character terraced cottage boasting a wealth of period features throughout. The cosy lounge features an open fireplace with gas fired stove, while the fitted kitchen, complete with exposed beams, flows through to a conservatory overlooking the private courtyard garden.

To the rear of the property, a useful hall provides excellent storage and leads to the ground floor bathroom. Upstairs are two generous bedrooms, both benefiting from access to the first-floor WC.

Outside, the property enjoys a private courtyard garden and the added advantage of an allocated parking space, making this a delightful home combining character and practicality.

Lounge

Front door, double glazed windows to the front and rear, open fireplace with gas fired stove, two radiators and access to the rear hall and downstairs bathroom.

Rear Hall

Double glazed window to the rear, built in storage cupboards and access to the downstairs bathroom.

Bathroom

Bath, WC and a wash hand basin.

Kitchen

Double glazed window to rear, steps and entrance to the conservatory, fitted kitchen with wall and base units, SMEG electric oven and gas hob. extractor fan, space for a fridge/freezer, belfast sink and exposed beams.

Conservatory

Double glazed conservatory with door on to the garden and a radiator.

Landing

Doors to the bedrooms and a double glazed window to the front.

Bedroom One

Double glazed windows to the front and rear, access to the WC and a radiator.

Bedroom Two

Double glazed window to the rear, access to the WC and radiator.

W / C

WC, wash hand basin, radiator and a radiator.

Rear Garden

A low maintenance courtyard garden to the rear with a pergola with grape vines, laid to patio and gravel with a pond.

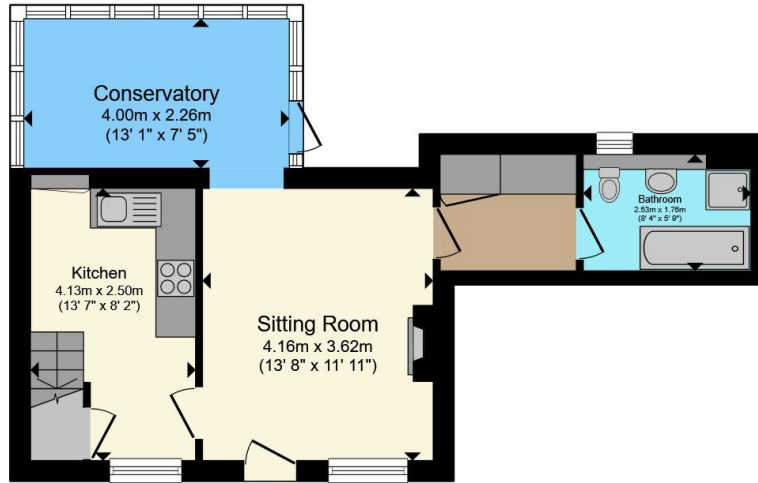
Parking

One allocated parking space.

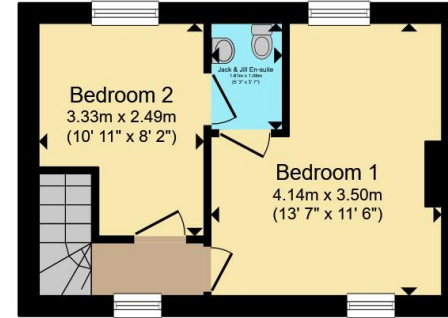








Ground Floor



First Floor

Total floor area 68.5 m² (737 sq.ft.) approx

This floor plan is for illustrative purposes only. It is not drawn to scale. Any measurements, floor areas (including any total floor area), openings and orientation are approximate. No details are guaranteed, they cannot be relied upon for any purpose and they do not form part of any agreement. No liability is taken for any error, omission or misstatement. A party must rely upon its own inspection(s). Powered by www.propertybox.io



To view this property please contact Connells on

T 01747 854 001
E shaftesbury@connells.co.uk

34 High Street
 SHAFTESBURY SP7 8JG

EPC Rating: D Council Tax
 Band: B

Tenure: Freehold

view this property online connells.co.uk/Property/SFT306377



1. MONEY LAUNDERING REGULATIONS Intending purchasers will be asked to produce identification documentation at a later stage and we would ask for your co-operation in order that there will be no delay in agreeing the sale. 2. These particulars do not constitute part or all of an offer or contract. 3. The measurements indicated are supplied for guidance only and as such must be considered incorrect. Potential buyers are advised to recheck measurements before committing to any expense. 4. We have not tested any apparatus, equipment, fixtures, fittings or services and it is in the buyers interest to check the working condition of any appliances.

Connells Residential is registered in England and Wales under company number 1489613, Registered Office is Cumbria House, 16-20 Hockliffe Street, Leighton Buzzard, Bedfordshire, LU7 1GN. VAT Registration Number is 500 2481 05.

See all our properties at www.connells.co.uk | www.rightmove.co.uk | www.zoopla.co.uk

Property Ref: SFT306377 - 0005