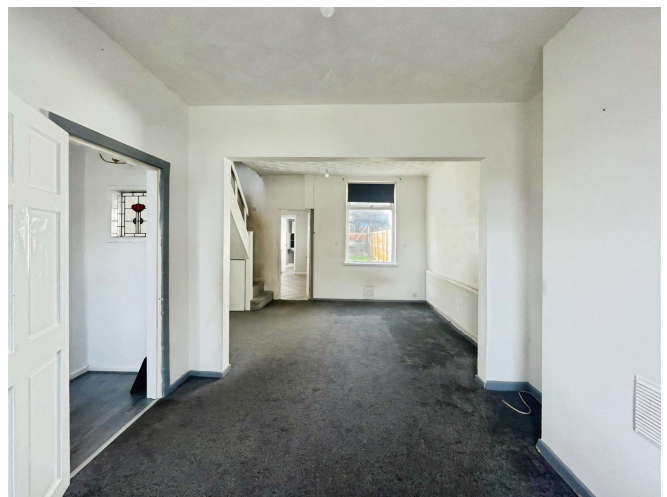




Goodrich Crescent, offers over £120,000

- Two spacious double bedrooms
- Large windows with natural light
- Close to local amenities
- Private garden for outdoor dining
- Council tax band C
- EPC Rating: D



 2  1  1



About the property

Presenting this neutrally decorated two-bedroom terraced house, a superb opportunity for first-time buyers, investors, or families seeking a comfortable and contemporary living space. Conveniently located with excellent public transport links, reputable nearby schools, and a range of local amenities, this property also benefits from scenic walking routes, appealing to those who enjoy an active lifestyle.

Upon entering, you are welcomed by two versatile open-plan reception rooms. The first boasts large windows, allowing ample natural light to create a bright and inviting atmosphere. The second reception room offers charming views over the garden, seamlessly connecting indoor and outdoor living for relaxation or entertaining.

The property offers two spacious double bedrooms, providing comfortable accommodation with flexible options to suit a variety of living arrangements. There is a well-appointed bathroom servicing the bedrooms and guests alike. The open-plan kitchen is ideal for modern family life or entertaining friends and family.

Step outside to enjoy your own private garden, an inviting retreat for outdoor dining, gardening, or unwinding after a busy day.



Accommodation

Kitchen

10' 9" x 6' 1" (3.28m x 1.85m)

Living Room

10' 8" x 10' 3" (3.25m x 3.12m)

Dining Room

14' 2" x 10' 2" (4.32m x 3.10m)

Bathroom

8' 4" x 6' 1" (2.54m x 1.85m)

Bedroom 1

14' 2" x 10' 3" (4.32m x 3.12m)

Bedroom 2

11' 2" x 10' 2" (3.40m x 3.10m)

01633 221892

newport@peteralan.co.uk

Floorplan



This floor plan is for illustrative purposes only. It is not drawn to scale. Any measurements, floor areas (including any total floor area), openings and orientations are approximate. No details are guaranteed, they cannot be relied upon for any purpose and do not form any part of any agreement. No liability is taken for any error, omission or misstatement. A party must rely upon its own inspection(s). Powered by www.Propertybox.io

Important Information

Note while we endeavour to make our sales details accurate and reliable, if there is any point which is of particular interest to you, please contact the office and we will be pleased to confirm the position for you. We have not personally tested any apparatus, equipment, fixtures, fittings or services and cannot verify they are in working order or fit for their purposes. Nothing in these particulars is intended to indicate that carpets or curtains, furnishings or fittings, electrical goods (whether wired or not). Gas fires or light fittings or any other fixtures not expressly included form part of the property offered for sale. This computer generated Floorplan, if applicable, is intended as a general guide to the layout and design of the property. It is not to scale and should not be relied upon for dimensions. Tenure: We cannot confirm the tenure of the property as we have not had access to the legal documents. The buyer is advised to obtain verification from their solicitor or surveyor.

Peter Alan Limited is registered in England and Wales under company number 2073153, Registered Office is Cumbria House, 16-20 Hockliffe Street, Leighton Buzzard, Bedfordshire, LU7 1GN. VAT Registration Number is 500 2481 05. For activities relating to regulated mortgages and non-investment insurance contracts, Peter Alan Limited is an appointed representative of Connells Limited which is authorised and regulated by the Financial Conduct Authority. Connells Limited's Financial Services Register number is 302221. Most buy-to-let

pa peter
alan