



**Helm Close, Gosport PO13 9XG**

**welcome to**

## **Helm Close, Gosport**

**\*\* Close to Shops and Schools \*\* Great Bus and Road Links \*\* No Onward Chain \*\* Ideal for Investors \*\* Great First Time Buy \*\***

### **Entrance Hall**

UPVC double glazed door to front access, UPVC double glazed window to side elevation, stairs to first floor landing, radiator.

### **Cloakroom**

Obscure UPVC double glazed window to front elevation, wash hand basin, wc, radiator.

### **Lounge**

16' 1" x 12' 3" ( 4.90m x 3.73m )

UPVC patio doors to rear garden, UPVC double glazed window to rear elevation, understairs storage, electric fire surround, radiator.

### **Kitchen**

10' 9" x 9' 4" ( 3.28m x 2.84m )

UPVC double glazed window to front elevation, matching wall and base units, one and a half bowl stainless steel sink and drainer unit, double oven, hob, cooker hood, space for fridge/freezer, plumbing for washing machine and tumble dryer, radiator.

### **First Floor Landing**

UPVC double glazed window to side elevation, airing cupboard, access to loft space, doors to:

### **Bedroom 1**

10' 8" x 9' 4" ( 3.25m x 2.84m )

UPVC double glazed window to rear elevation, fitted wardrobe, radiator.

### **Bedroom 2**

10' 2" x 9' 4" ( 3.10m x 2.84m )

UPVC double glazed window to front elevation, radiator.

### **Bedroom 3**

8' 4" x 6' 5" ( 2.54m x 1.96m )

UPVC double glazed window to front elevation, radiator.

### **Bathroom**

UPVC obscure double glazed window to rear elevation, bath with shower over and screen, wash hand basin with utility under, wc, tiled surrounds.

### **Outside**

To the front there is an allocated parking space. To the rear the garden has a patio section, shrub and flower beds, enclosed to perimeters.





***view this property online*** [fox-and-sons.co.uk/Property/GOS112473](http://fox-and-sons.co.uk/Property/GOS112473)



welcome to

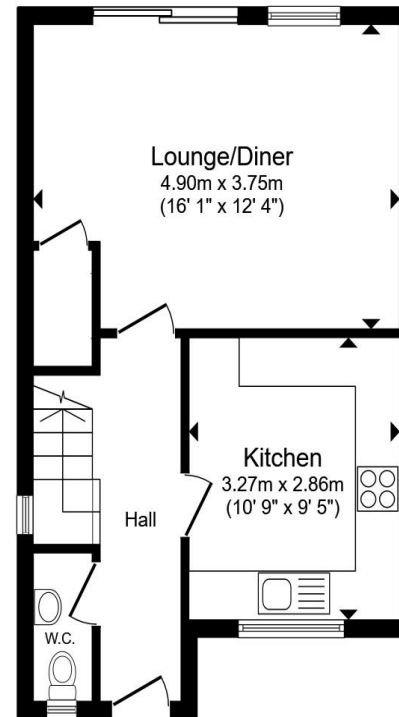
## Helm Close, Gosport

- Three Bedrooms
- No Onward Chain
- Off Road Parking
- Downstairs WC
- Fitted Kitchen

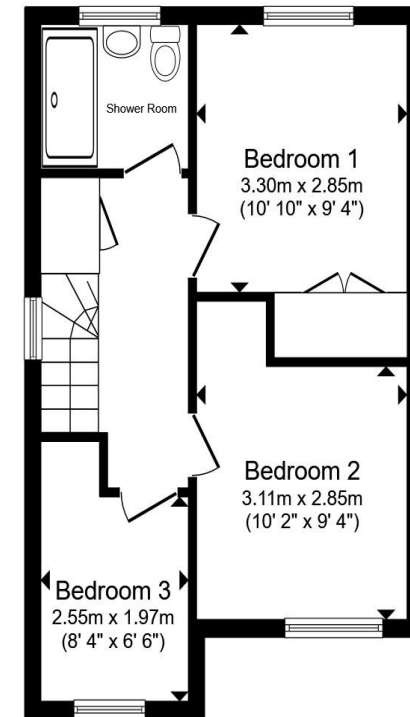
Tenure: Freehold EPC Rating: C  
Council Tax Band: C

offers over

**£265,000**



**Ground Floor**



**First Floor**

Total floor area 76.5 m<sup>2</sup> (824 sq.ft.) approx

This floor plan is for illustrative purposes only. It is not drawn to scale. Any measurements, floor areas (including any total floor area), openings and orientation are approximate. No details are guaranteed, they cannot be relied upon for any purpose and they do not form part of any agreement. No liability is taken for any error, omission or misstatement. A party must rely upon its own inspection(s). Powered by [www.propertybox.io](http://www.propertybox.io)



view this property online [fox-and-sons.co.uk/Property/GOS112473](http://fox-and-sons.co.uk/Property/GOS112473)



Property Ref:  
GOS112473 - 0007

1. MONEY LAUNDERING REGULATIONS Intending purchasers will be asked to produce identification documentation at a later stage and we would ask for your co-operation in order that there is no delay in agreeing the sale. 2. These particulars do not constitute part or all of an offer or contract. 3. The measurements indicated are supplied for guidance only and as such must be considered incorrect. Potential buyers are advised to recheck measurements before committing to any expense. 4. We have not tested any apparatus, equipment, fixtures or services and it is in the buyers interest to check the working condition of any appliances. 5. Where an EPC, or a Home Report (Scotland only) is held for this property, it is available for inspection at the branch by appointment. If you require a printed version of a Home Report, you will need to pay a reasonable production charge reflecting printing and other costs. 6. We are not able to offer an opinion either written or verbal on the content of these reports and this must be obtained from your legal representative. 7. Whilst we take care in preparing these reports, a buyer should ensure that his/her legal representative confirms as soon as possible all matters relating to title including the extent and boundaries of the property and other important matters before exchange of contracts.

Fox & Sons is a trading name of Sequence (UK) Limited which is registered in England and Wales under company number 4268443, Registered Office is Cumbria House, 16-20 Hockliffe Street, Leighton Buzzard, Bedfordshire, LU7 1GN. VAT Registration Number is 500 2481 05.



**023 9250 3733**



[Gosport@fox-and-sons.co.uk](mailto:Gosport@fox-and-sons.co.uk)



10 High Street, GOSPORT, Hampshire, PO12 1BX



[fox-and-sons.co.uk](http://fox-and-sons.co.uk)