

Stockton Heath



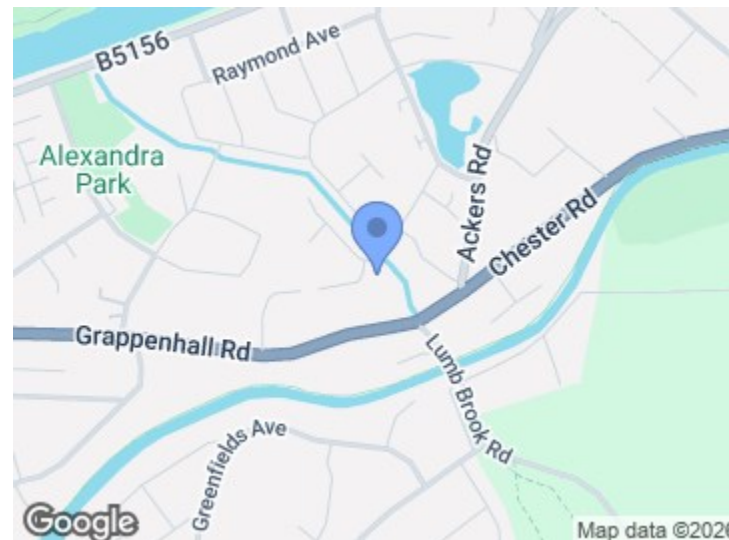
SUPER FAMILY ACCOMODATION | FOUR DOUBLE BEDROOMS & EN-SUITE | THREE RECEPTION ROOMS | UTILITY ROOM & G/F WC | WELL PRESENTED THROUGHOUT This recently extended four double bedroom home is located in a quiet backwater of Stockton Heath, walking distance to central Stockton Heath, Alexandra Park and outstanding local schools.

£545,000

Tel: 01925 600 200

Location

Situated south of Warrington town centre and the Manchester Ship Canal, this hugely popular village is surrounded by picturesque countryside. Located on what was once a Roman settlement, Stockton Heath has since been home to many notable residents, including film legend George Formby. Boasting an impressive selection of independent shops and boutiques as well as useful amenities including a supermarket and post office. There are a fine selection of restaurants and bars on the doorstep, offering either a relaxed setting or a more cosmopolitan night out. The village is popular for families, thanks to the number of parks within easy walking distance and outstanding local schools. It is also ideal for young professionals who benefit from the excellent amenities and transport connections.



Total area: approx. 144.4 sq. metres



| Energy Efficiency Rating | | Current | Potential |
|---|-------------------------|---------|-----------|
| Vary energy efficient - lower running costs | | | |
| (92 plus) A | | | |
| (81-91) B | | | |
| (69-80) C | | | |
| (55-68) D | | | |
| (39-54) E | | | |
| (21-38) F | | | |
| (1-20) G | | | |
| Not energy efficient - higher running costs | | | |
| England & Wales | EU Directive 2002/91/EC | | |

| Environmental Impact (CO ₂) Rating | | Current | Potential |
|---|-------------------------|---------|-----------|
| Vary environmentally friendly - lower CO ₂ emissions | | | |
| (92 plus) A | | | |
| (81-91) B | | | |
| (69-80) C | | | |
| (55-68) D | | | |
| (39-54) E | | | |
| (21-38) F | | | |
| (1-20) G | | | |
| Not environmentally friendly - higher CO ₂ emissions | | | |
| England & Wales | EU Directive 2002/91/EC | | |

Stockton Heath Willow Drive



Accommodation

Entrance Hallway

16'8" x 6'0" (5.10m x 1.84m)
PVC door with part frosted panels and adjoining PVC Double glazed windows, engineered wood effect flooring, ceiling light, central heating radiator, under stairs recess and further storage area.

Lounge

13'3" x 13'3" (4.04m x 4.05m)
Feature fireplace with tiled hearth housing a living flame coal effect gas fire and traditional style mantle, ceiling light, ceiling coving, television point and access to:

Dining Kitchen

19'8" x 8'10" (6m x 2.7m)
Recently fitted high-gloss kitchen hosting a range of integrated appliances including 'Samsung' American style fridge / freezer with water & ice function (Negotiable), 'Zanussi' four ring gas hob with 'Neff' extractor above, 'Bosch' oven with grill above, 'Bosch' integrated dishwasher, Sunken one and a half bowl sink with worktop drainer & chrome mixer tap, tiled flooring, wireless ceiling speakers for 'Sonos' (or equivalent), PVC Double glazed window to the rear elevation, vertical central heating radiator, spotlighting and bi-folding doors opening to a Southerly aspect rear garden.

Family Room

19'11" x 10'11" (6.09m x 3.33m)
Spotlighting, ceiling speakers for 'Sonos' (or equivalent), ethernet point, television point, engineered flooring, PVC double glazed windows to the front and side elevations, central heating radiator, access to:

Rear Vestibule

8'10" x 4'7" (2.7m x 1.4m)
Tiled flooring, ceiling light, central heating radiator and PVC Door opening onto the rear garden.

Utility Room

6'2" x 4'11" (1.9m x 1.52m)
Continued tiled flooring, eye and base level units with roll top heat resistant worktops with space below for washer and dryer, boiler cupboard housing a modern 'Baxi' combi-boiler, PVC double glazed window to the side elevation and ceiling light.

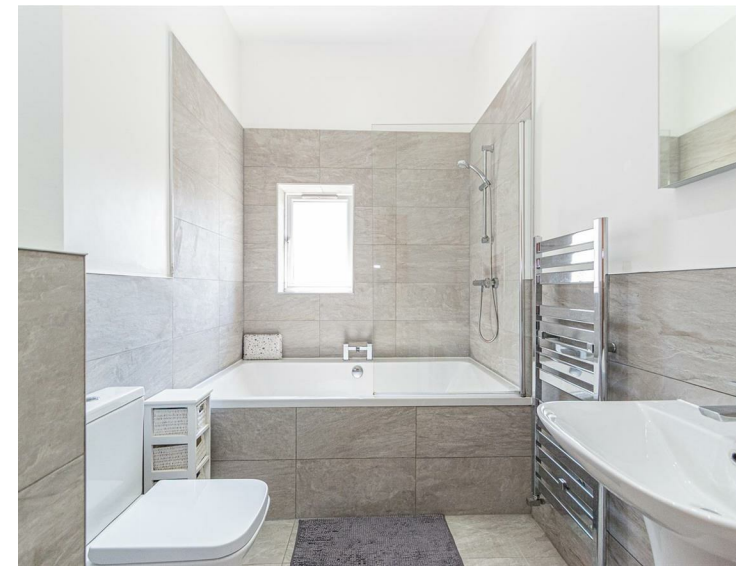
WC

6'2" x 3'4" (1.9m x 1.04m)
Continued tiled flooring, wash hand basin with chrome mixer tap and tiled splashback, low level W.C, ceiling light, Chrome towel rail, frosted PVC window to both side and rear elevations.

First Floor

Landing

Loft access (part-boarded) and ceiling light.



Bedroom One

11'7" x 10'11" (3.54m x 3.33m)
Vaulted ceiling, central heating radiator, PVC Window to the rear elevation, spotlighting and access to:

En-Suite Shower Room

6'2" x 6'0" (1.9m x 1.85m)
Modern suite comprising tiled flooring and tiled walls with same level walk in shower with glass screen and chrome tapware with matching overhead shower, hand wash basin with chrome mixer tap, chrome ladder-style radiator, spotlighting, extractor fan and frosted PVC Window to the rear elevation.

Bedroom Two

13'3" x 12'3" (4.05m x 3.75m)
PVC Double glazed window to the front elevation, central heating radiator, integrated wardrobe space with twin doors, central heating radiator and ceiling light.

Bedroom Three

17'3" x 10'5" (max) (5.27m x 3.18m (max))
PVC Window to the front elevation, integrated wardrobe space, central heating radiator and ceiling light.

Bedroom Four

10'9" x 9'1" (3.28m x 2.77m)
Two PVC double glazed windows to the front elevation, integrated storage cupboard, vaulted ceiling, central heating radiator and ceiling light.

Family Bathroom

10'11" x 6'10" (3.33m x 2.1m)
Tiled flooring and part tiled walls, oversized bath with jacuzzi function, Chrome shower overhead and Chrome mixer taps. Hand wash basin with Chrome mixer tap, Chrome ladder style radiator, ceiling speaker for 'Sonos' (or equivalent), PVC Frosted double glazed window to the side elevation, spotlighting and extractor fan.

Outside

The front elevation features a block paved driveway for two or more vehicles, a low level brick wall and a garden laid to lawn with established borders.

The rear garden is laid to lawn with a block paved patio area accessed from the Dining Kitchen boasting a Southerly aspect, including a mix of fenced and bricked borders. Gated access to the side elevation provides a walkway from the front to rear.

Tenure

Freehold

Council Tax

Tax Band 'C'

Local Authority

Warrington Borough Council

Services

No tests have been made of main services, heating systems or associated appliances. Neither has confirmation been obtained from the statutory bodies of the presence of these services. We cannot, therefore, confirm that they are in working order and any prospective purchaser is advised to obtain verification from their solicitor or surveyor.

Postcode

WA4 2AT

Possession

Vacant Possession upon completion

Viewing

Strictly accompanied viewings with Cowdel Clarke Estate and Lettings Agents on 01925 60000 or property@cowdelclarke.com