



Connells

Mallet Road
Ivybridge



Property Description

Situated in a quiet cul-de-sac, this spacious and versatile five-bedroom extended end-terrace home offers generous accommodation throughout, making it an ideal choice for growing families or multi-generational living.

Conveniently located close to local amenities, shops, main transport links and the A38 Devon Expressway, the property also benefits from being within walking distance of Woodlands Primary School.

The accommodation is well-presented and thoughtfully arranged, featuring a modern high-gloss fitted kitchen complete with double oven, integrated appliances, an island with undermount sink and ample storage. The kitchen opens into a generous dining area, creating an excellent space for family meals and entertaining. Patio doors lead directly to the enclosed rear garden, providing seamless indoor-outdoor living.

A particular feature of the property is the ground floor bedroom with its own en-suite shower room, offering flexible accommodation that would be perfect for guests, older relatives or those working from home.

Upstairs, there are four further well-proportioned bedrooms, including a principal bedroom with en-suite facilities. The family bathroom is fitted with a luxurious Jacuzzi bath, providing the perfect place to relax and unwind.

Externally, the property benefits from an enclosed rear garden, a good-sized garage and driveway parking to the front.

Entrance Hall

double glazed door to the side aspect, double glazed window to the front aspect, door to lounge, stairs to first floor

Lounge

Double glazed window to the front aspect, radiator

Dining Room

15' 7" max x 9' 9" max (4.75m max x 2.97m max)

Two double glazed windows to the rear aspect, door to bedroom two, double glazed patio door to rear garden, vertical radiator

Kitchen

15' 1" max x 7' 9" max (4.60m max x 2.36m max)

Modern high gloss kitchen with wall and base units, integrated dishwasher, fridge freezer, washing machine, induction hob, double oven, undermount sink and mixer tap

Bedroom Two

9' 9" max x 6' 4" max (2.97m max x 1.93m max)

Double glazed window to the rear aspect, door access to ensuite, radiator

En-Suite

Shower cubicle, wash hand basin, low level WC

Landing

Door access to bedrooms, storage cupboard

Bedroom One

18' 6" max x 10' 11" max (5.64m max x 3.33m max)

Double glazed window to the rear aspect, door access to en-suite, radiator

En-Suite

Shower cubicle, wash hand basin, low level WC

Bedroom Three

11' 8" max x 10' 9" max (3.56m max x 3.28m max)

Double glazed window to the front aspect, radiator

Bedroom Four

12' 10" max x 9' 9" max (3.91m max x 2.97m max)

Two double glazed windows to the front aspect, built in wardrobe, storage cupboard, radiator

Bedroom Five

7' 8" max x 7' 2" max (2.34m max x 2.18m max)

Double glazed window to the rear aspect, radiator

Bathroom

Double glazed window to the rear aspect, bath with shower over, concealed WC cistern, wash hand basin and vanity unit, radiator

Rear Garden

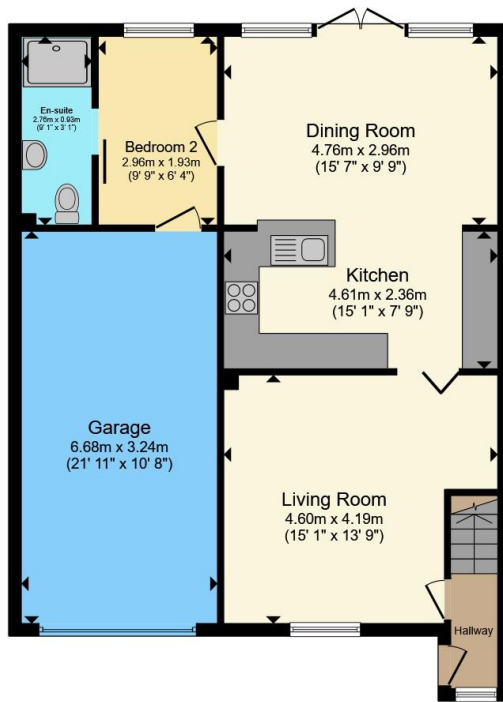
Patio area and laid to lawn, side gate access, fully enclosed

Garage

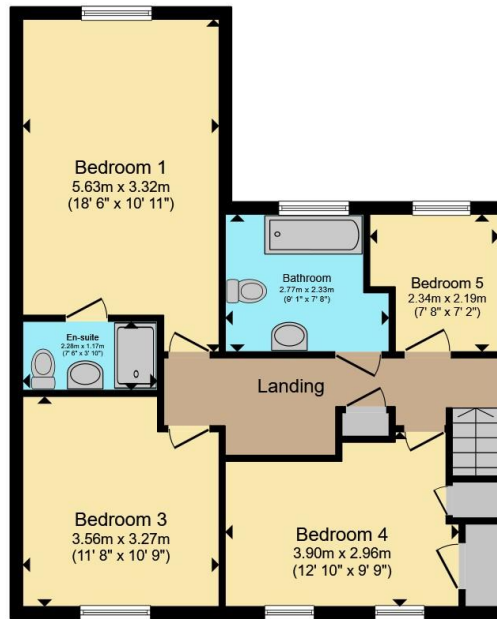
21' 11" max x 10' 8" max (6.68m max x 3.25m max)

Up and over door





Ground Floor



First Floor



Total floor area 145.4 m² (1,565 sq.ft.) approx

This floor plan is for illustrative purposes only. It is not drawn to scale. Any measurements, floor areas (including any total floor area), openings and orientation are approximate. No details are guaranteed, they cannot be relied upon for any purpose and they do not form part of any agreement. No liability is taken for any error, omission or misstatement. A party must rely upon its own inspection(s). Powered by www.propertybox.io



To view this property please contact Connells on

T 01752 691 200
E ivybridge@connells.co.uk

11 Glanvilles Road Glanvilles Mill
 IVYBRIDGE PL21 9PS

EPC Rating: C Council Tax
 Band: C

view this property online connells.co.uk/Property/IVY307167

Tenure: Freehold



1. MONEY LAUNDERING REGULATIONS Intending purchasers will be asked to produce identification documentation at a later stage and we would ask for your co-operation in order that there will be no delay in agreeing the sale. 2. These particulars do not constitute part or all of an offer or contract. 3. The measurements indicated are supplied for guidance only and as such must be considered incorrect. Potential buyers are advised to recheck measurements before committing to any expense. 4. We have not tested any apparatus, equipment, fixtures, fittings or services and it is in the buyers interest to check the working condition of any appliances.

Connells Residential is registered in England and Wales under company number 1489613, Registered Office is Cumbria House, 16-20 Hockliffe Street, Leighton Buzzard, Bedfordshire, LU7 1GN. VAT Registration Number is 500 2481 05.

See all our properties at www.connells.co.uk | www.rightmove.co.uk | www.zoopla.co.uk

Property Ref: IVY307167 - 0002