



Connells

Wood End Road
WALSALL



Property Description

Situated in a peaceful cul-de-sac, this beautifully presented three bedroom corner semi-detached home offers spacious living accommodation, making it an ideal purchase for families, or those looking to upsize.

Occupying a generous corner plot, the property enjoys attractive kerb appeal with well-maintained front and rear gardens, ample off road parking, and excellent potential for further extension (subject to the necessary planning permissions).

Internally, the home has been tastefully maintained throughout and briefly comprises a welcoming entrance hall, two bright and spacious reception rooms, conservatory overlooking the rear garden, fitted breakfast kitchen with ample storage and worktop space, downstairs w.c/utility.

To the first floor are three well-proportioned bedrooms, all presented to a high standard, together with an en-suite to master bedroom and a stylish family shower room finished with contemporary fittings.

The enclosed rear garden provides a private outdoor retreat, offering a combination of lawn and patio areas ideal for relaxing, outdoor dining, and a family enjoyment.

Located on Wood End Road in one of Walsall's most sought-after residential areas, the property benefits from excellent access to highly regarded local schools, and nearby motorway connections, while also being within easy reach of local parks and amenities.

Early viewing is highly advised to appreciate the quality, space, and superb location this exceptional family home has to offer.

Access Via

A front door opening into porch entrance with further door to:

Entrance Hall

Having stairs rising to first floor, under stairs storage, radiator and doors to:

Reception Room

Having a double glazed bay window to the front and radiator.

Living Room

Having radiator and double glazed double doors to:

Conservatory

Having double glazed windows and doors to rear garden.

Kitchen/ Diner

Having a double glazed window to the front and side, double glazed double doors to rear garden, fitted kitchen with wall and base units and work tops over, sink and drainer, integrated electric fan, integrated dishwasher, spot lights, complementary tiling, storage cupboard, two radiators and door to:

Utility/ W.C

Having a double glazed window to the side, low level w.c, hand wash basin, plumbing for washing machine and boiler.

First Floor

Landing

Having loft (part boarded) access and doors to:

Master Bedroom

Having two double glazed windows to the front, radiator and door to:

En-Suite

Having a double glazed window to the rear, shower cubicle, low level w.c, hand wash basin, complementary tiling, heated towel rail and spot lights.

Bedroom Two

Having a double glazed window to the front and radiator.

Bedroom Three

Having a double glazed window to the rear and radiator.

Shower Room

Having a double glazed window to the rear, shower cubicle, low level w.c, hand wash basin and heated towel rail.

Outside

To the front of the property is a driveway for off road parking, raised lawned fore garden with mature borders and shrubs.

To the rear of the property is an enclosed lawned garden with mature borders, shrubs, flower beds, block paved area, outside water tap and gated side access.

Outbuilding/ Garage

Having double doors.

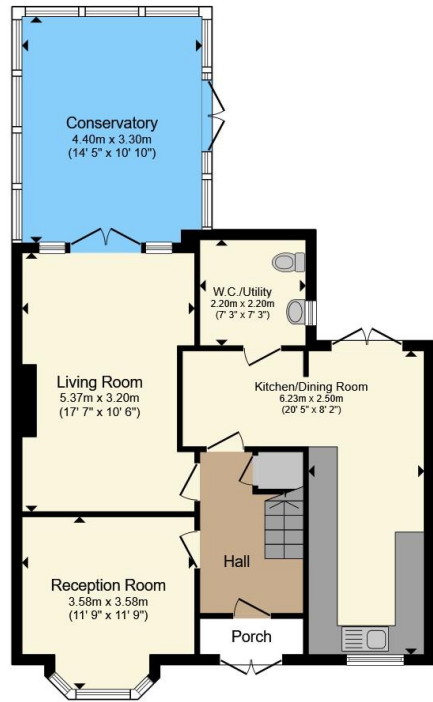
Additional Notes

Alarm system.

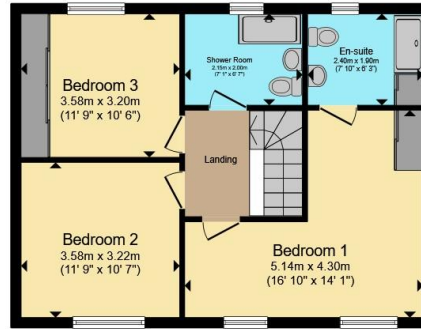




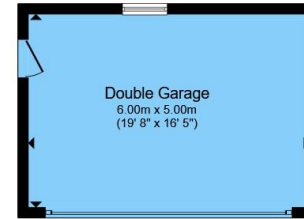




Ground Floor



First Floor



Garage

Total floor area 158.4 m² (1,705 sq.ft.) approx

This floor plan is for illustrative purposes only. It is not drawn to scale. Any measurements, floor areas (including any total floor area), openings and orientation are approximate. No details are guaranteed, they cannot be relied upon for any purpose and they do not form part of any agreement. No liability is taken for any error, omission or misstatement. A party must rely upon its own inspection(s). Powered by www.propertybox.io



To view this property please contact Connells on

T 01922 721 000
E walsall@connells.co.uk

57-59 Bridge Street
 WALSALL WS1 1JQ

EPC Rating: C Council Tax
 Band: C

Tenure: Freehold

view this property online connells.co.uk/Property/WSL318795



1. MONEY LAUNDERING REGULATIONS Intending purchasers will be asked to produce identification documentation at a later stage and we would ask for your co-operation in order that there will be no delay in agreeing the sale. 2. These particulars do not constitute part or all of an offer or contract. 3. The measurements indicated are supplied for guidance only and as such must be considered incorrect. Potential buyers are advised to recheck measurements before committing to any expense. 4. We have not tested any apparatus, equipment, fixtures, fittings or services and it is in the buyers interest to check the working condition of any appliances.

Connells Residential is registered in England and Wales under company number 1489613, Registered Office is Cumbria House, 16-20 Hockliffe Street, Leighton Buzzard, Bedfordshire, LU7 1GN. VAT Registration Number is 500 2481 05.

See all our properties at www.connells.co.uk | www.rightmove.co.uk | www.zoopla.co.uk

Property Ref: WSL318795 - 0004