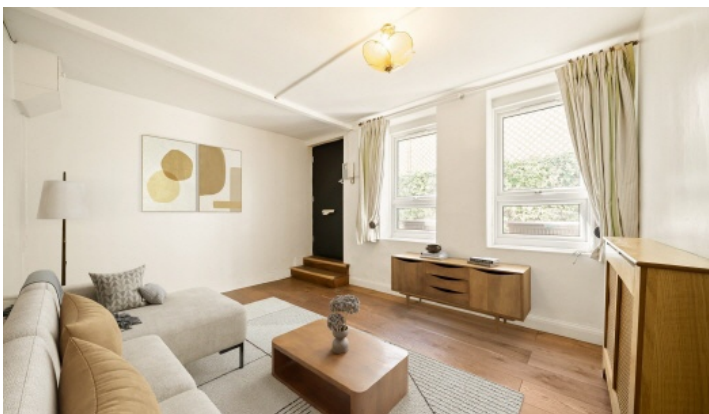


FLETCHERS

ESTATE AGENTS



Spencer Road, W4

£350,000

This nicely proportioned flat features a private entrance, good sized living room and an eat-in kitchen. Burlington Court, on Spencer Road, sits in the leafy conservation area of Grove Park in Chiswick. It was originally built in 1901 as a landmark hotel and later converted into residential flats in the 1940s. Today, it stands as a quiet historic block of flats featuring oak flooring, communal balconies, and some resident parking.

Spencer Road is moments from Chiswick main line station, with a quick route to Waterloo station in only 29 minutes. The delightful riverside pubs at Strand on The Green, and the Thames Path are also only a 10 minute walk away. The A4 is only 2 minutes by car with direct links to both central London and Heathrow.

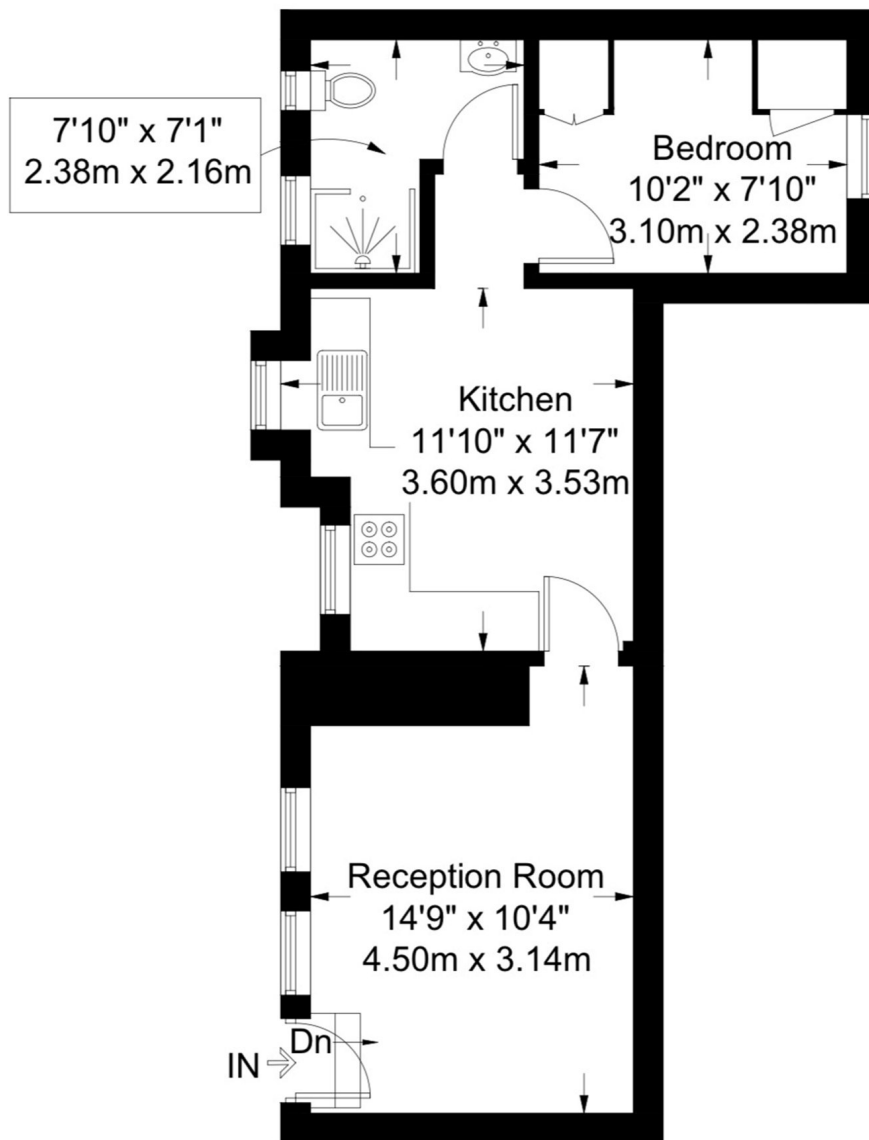
- Reception Room • Kitchen/Diner • Double Bedroom • Bathroom • Private Entrance • Chain Free •

FLETCHERS

ESTATE AGENTS

Burlington Court. Spencer Road W4 3SY

Approximate Gross Internal Area = 39.7 sq m / 427 sq ft



Fletchers Chiswick Turnham Green Sales
58 Turnham Green Terrace, London, W4 1QP
020 8987 3000
chiswicksales@fletcherestates.com

Energy Rating: C. We aim to make our particulars both accurate and reliable. However they are not guaranteed; nor do they form part of an offer or contract. If you require clarification on any points then please contact us, especially if you're traveling some distance to view. Please note that appliances and heating systems have not been tested and therefore no warranties can be given as to their good working order.