

**Shaw
& Co**
ESTATE
AGENTS



£295,000

Farm Road

Hounslow, TW4 5PQ

**Shaw
& Co**

PROPERTY SUMMARY

Offered to the market with no onward chain, Shaw & Co present this very spacious two bedroom, third floor flat, ideally located on the highly sought-after Farm Road in Whitton.

The property is accessed via a generous entrance hallway, providing an immediate sense of space and benefitting from ample built-in storage.

To the left is a large double bedroom, alongside a well-presented three-piece family bathroom. Across the hallway sits a spacious master bedroom, offering excellent proportions and natural light.

The accommodation continues with a well-maintained kitchen and a bright reception room, both offering a comfortable and versatile space ideal for everyday living and family entertaining.

Externally, the property further benefits from communal gardens, residents' parking, and a private ground floor storage room, perfect for bikes and additional belongings.

This is a fantastic opportunity to acquire a generously sized flat in a popular residential location, offered with the added advantage of no onward chain.

2



1



1

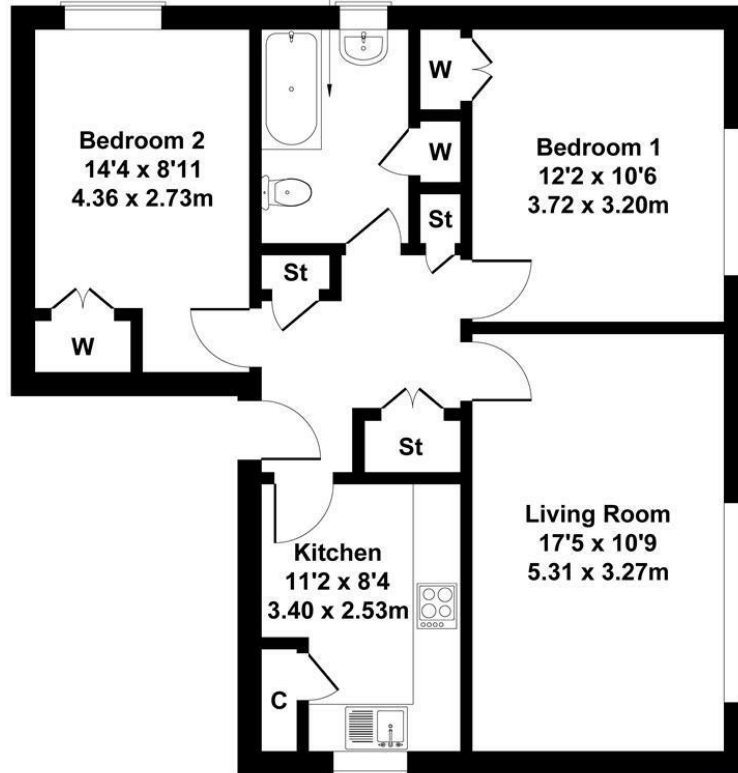




Farm Road

Approximate Gross Internal Area
721 sq ft - 67 sq m

Bathroom
8'11 x 6'2
2.72 x 1.87m



Not to Scale. Produced by The Plan Portal 2026
For Illustrative Purposes Only.

Shaw
& Co

LOCAL AUTHORITY
Richmond

TENURE
Leasehold

COUNCIL TAX BAND
C

VIEWINGS

By prior appointment only

Energy Efficiency Rating		Current	Potential
Very energy efficient - lower running costs			
(92 plus) A			
(81-91) B			
(69-80) C			
(55-68) D		64	76
(39-54) E			
(21-38) F			
(1-20) G			
Not energy efficient - higher running costs			
England & Wales		EU Directive 2002/91/EC	



Agents Note: Whilst every care has been taken to prepare these particulars, they are for guidance purposes only. All measurements are approximate and are for general guidance purposes only and whilst every care has been taken to ensure their accuracy, they should not be relied upon and potential buyers/tenants are advised to recheck the measurements

Shaw
& Co
ESTATE
AGENTS

OFFICE ADDRESS
10 Central Parade
New Heston Road
Heston
Middlesex
TW5 0LJ

OFFICE DETAILS
0208 570 7258
heston@shawandcoestates.com