



**£272,000**

**Stirling Grove**

Hounslow, TW3 1QG

## PROPERTY SUMMARY

Shaw & Co present this two bedroom apartment to the market for sale. With no onward chain, the property comprises of two well-sized bedrooms, a family bathroom, semi-open plan kitchen and lounge. Additional benefits include the communal garden and allocated parking.

The property is situated on the 1st Floor in a prime location of Hounslow with just seconds of a walk to Hounslow East Station (Piccadilly line) and the 24 Hour Asda Superstore. Also situated a stones throw away from amenities including the Treaty shopping centre, restaurants and Hounslow High Street. Reputable schools such as Spring Grove Primary School and Lampton Academy.

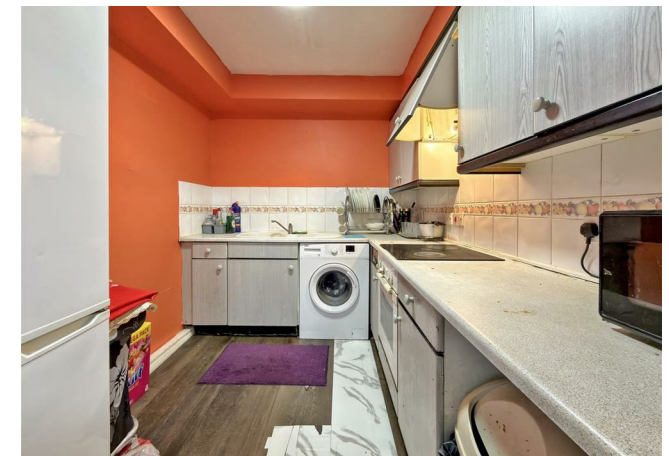
2



1



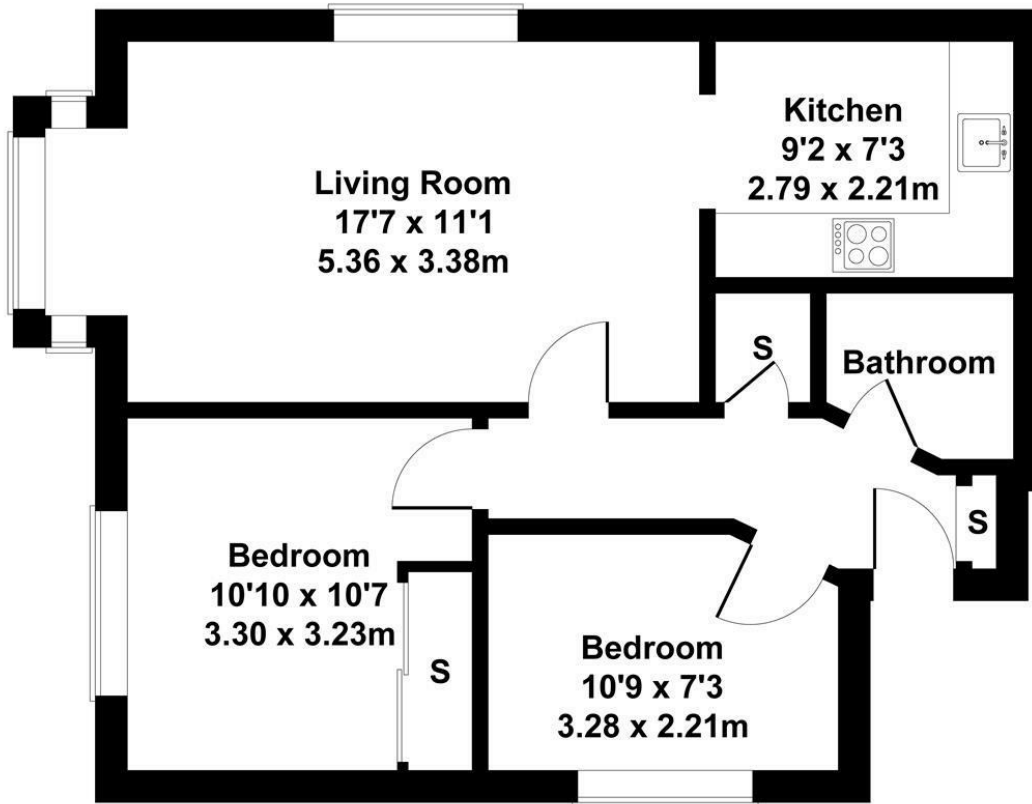
1





# Stirling Grove

Approximate Gross Internal Area  
592 sq ft - 55 sq m



Not to Scale. Produced by The Plan Portal 2026  
For Illustrative Purposes Only.

Shaw  
& Co

## LOCAL AUTHORITY

Hounslow

## TENURE

Leasehold

## COUNCIL TAX BAND

D

## VIEWINGS

By prior appointment only

Energy Efficiency Rating		Current	Potential
Very energy efficient - lower running costs			
(92 plus) A			
(81-91) B			
(69-80) C			
(55-68) D		64	77
(39-54) E			
(21-38) F			
(1-20) G			
Not energy efficient - higher running costs			
England & Wales		EU Directive 2002/91/EC	



Agents Note: Whilst every care has been taken to prepare these particulars, they are for guidance purposes only. All measurements are approximate and are for general guidance purposes only and whilst every care has been taken to ensure their accuracy, they should not be relied upon and potential buyers/tenants are advised to recheck the measurements

Shaw  
& Co

ESTATE  
AGENTS

### OFFICE ADDRESS

10 Central Parade  
New Heston Road  
Heston  
Middlesex  
TW5 0LH

### OFFICE DETAILS

0208 570 7258  
heston@shawandcoestates.com