



pa peter
alan

Pleasant View, £190,000

- Off-road parking
- Proximity to Cyfarthfa Park
- Scenic Views
- Close to local amenities
- Great transport links
- Ideal family home
- EPC Rating: D



 3  1  1

pa peter
alan

01685 722223
merthyrdfil@peteralan.co.uk



About the property

Situated in a popular location on Pleasant View, The Quar, this well-presented end-of-terrace property offers an excellent opportunity for families and first-time buyers alike. Conveniently positioned close to Cyfarthfa Park, a range of local amenities, and excellent transport links, the property perfectly combines scenic surroundings with everyday convenience.

Internally, the accommodation is well maintained throughout and briefly comprises a welcoming porch leading into a spacious living room, providing a comfortable and versatile space for relaxation and entertaining. To the rear, a generous kitchen offers ample worktop and storage space, with access out to the rear garden – ideal for modern family living.

To the first floor, the property benefits from three well-proportioned bedrooms, offering flexible accommodation for growing families, alongside a family bathroom.

Externally, the property enjoys off-road parking, adding practicality for homeowners, whilst the rear patio



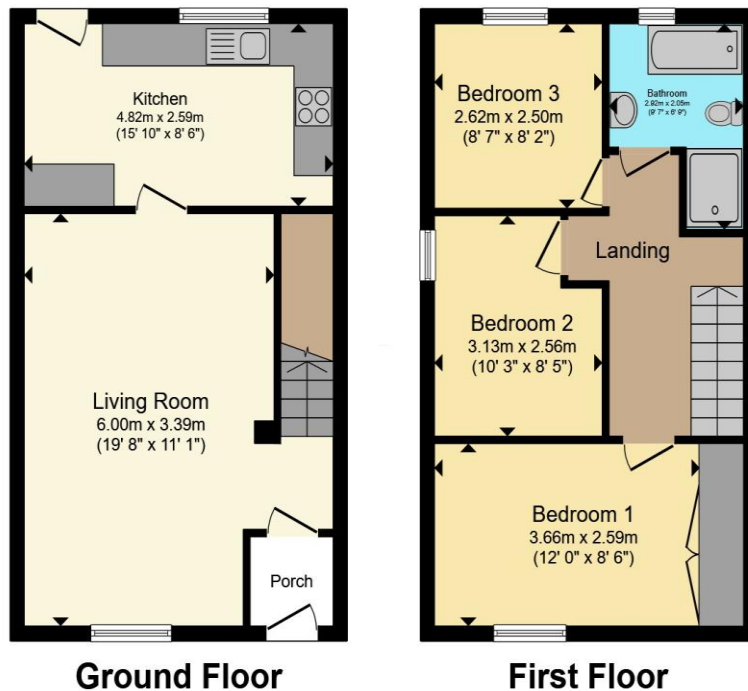
pa peter
alan

Accommodation

01685 722223

merthyrdfil@peteralan.co.uk

Floorplan



Total floor area 78.6 m² (846 sq.ft.) approx

This floor plan is for illustrative purposes only. It is not drawn to scale. Any measurements, floor areas (including any total floor area), openings and orientation are approximate. No details are guaranteed, they cannot be relied upon for any purpose and they do not form part of any agreement. No liability is taken for any error, omission or misstatement. A party must rely upon its own inspection(s). Powered by www.propertybox.io



Important Information

Note while we endeavour to make our sales details accurate and reliable, if there is any point which is of particular interest to you, please contact the office and we will be pleased to confirm the position for you. We have not personally tested any apparatus, equipment, fixtures, fittings or services and cannot verify they are in working order or fit for their purposes. Nothing in these particulars is intended to indicate that carpets or curtains, furnishings or fittings, electrical goods (whether wired or not), Gas fires or light fittings or any other fixtures not expressly included form part of the property offered for sale. This computer generated Floorplan, if applicable, is intended as a general guide to the layout and design of the property. It is not to scale and should not be relied upon for dimensions. Tenure: We cannot confirm the tenure of the property as we have not had access to the legal documents. The buyer is advised to obtain verification from their solicitor or surveyor.

Peter Alan Limited is registered in England and Wales under company number 2073153, Registered Office is Cumbria House, 16-20 Hockliffe Street, Leighton Buzzard, Bedfordshire, LU7 1GN. VAT Registration Number is 500 2481 05. For activities relating to regulated mortgages and non-investment insurance contracts, Peter Alan Limited is an appointed representative of Connells Limited which is authorised and regulated by the Financial Conduct Authority. Connells Limited's Financial Services Register number is 302221. Most buy-to-let

