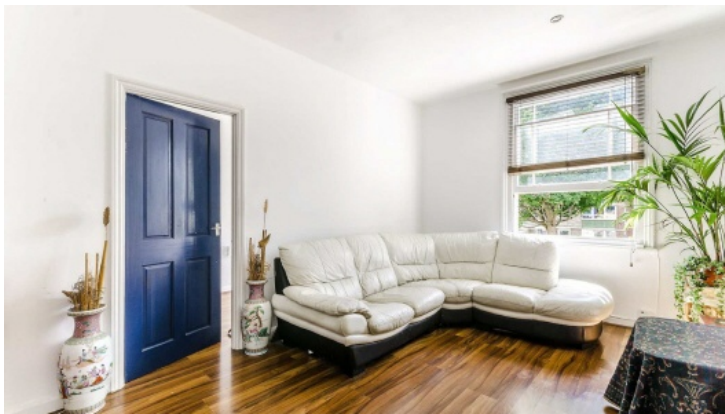


Frank Harris & Co.



Orde Hall Street, WC1N

£600,000

Set within a row of Victorian townhouses, this two-bedroom apartment enjoys natural light that floods the front-facing lounge throughout the day. Just a stone's throw away from the renowned Lamb's Conduit Street, the flat is surrounded by independent shops, leafy squares and vibrant local culture.

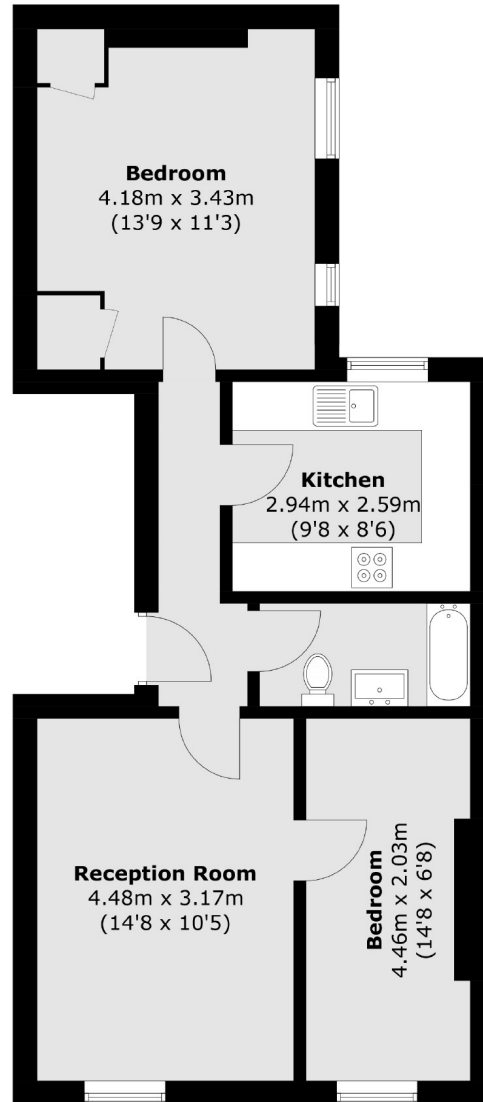


Bloomsbury offers easy walking access to Covent Garden, Theatreland, the British Museum, and major transport hubs, including St. Pancras International.

- Central Location • No Onward Chain • Period Property •
- Two Bedroom • Low Service Charge • High Ceilings •



Frank Harris & Co.



Total area (approx.): 54.8 sq. m (589.8 sq. ft)

Frank Harris & Co. Bloomsbury and Kings Cross

81 Marchmont Street,

London, WC1N 1AL

020 7405 4444

bloomsburysales@frankharris.co.uk

Energy Rating: D. We aim to make our particulars both accurate and reliable. However they are not guaranteed; nor do they form part of an offer or contract. If you require clarification on any points then please contact us, especially if you're traveling some distance to view. Please note that appliances and heating systems have not been tested and therefore no warranties can be given as to their good working order.

