

est 1979

Jeremy
Leaf & Co.



New Ash Close, N2

£365,000

- 2 Bedrooms
- Easy access to transport
- Ideal for first-time buyers
- Close to local amenities
- Quiet residential area
- Viewings are highly recommended!

98 High Road, London, N2 9EB
020 8444 5222

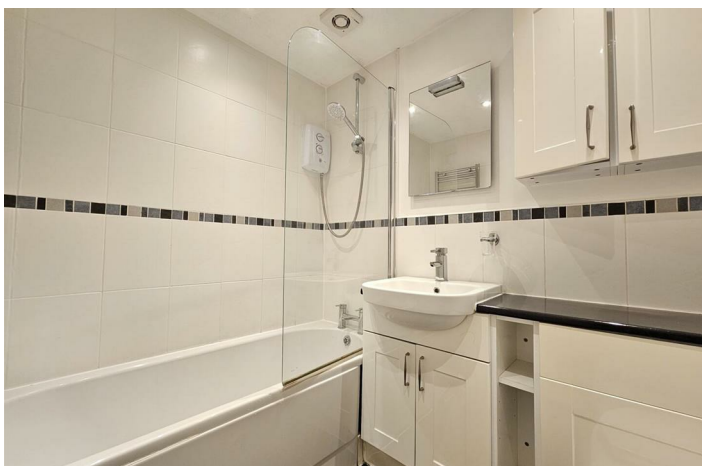
eastfinchley@jeremyleaf.co.uk
<https://www.jeremyleaf.co.uk/>

New Ash Close, East Finchley, N2 8DQ

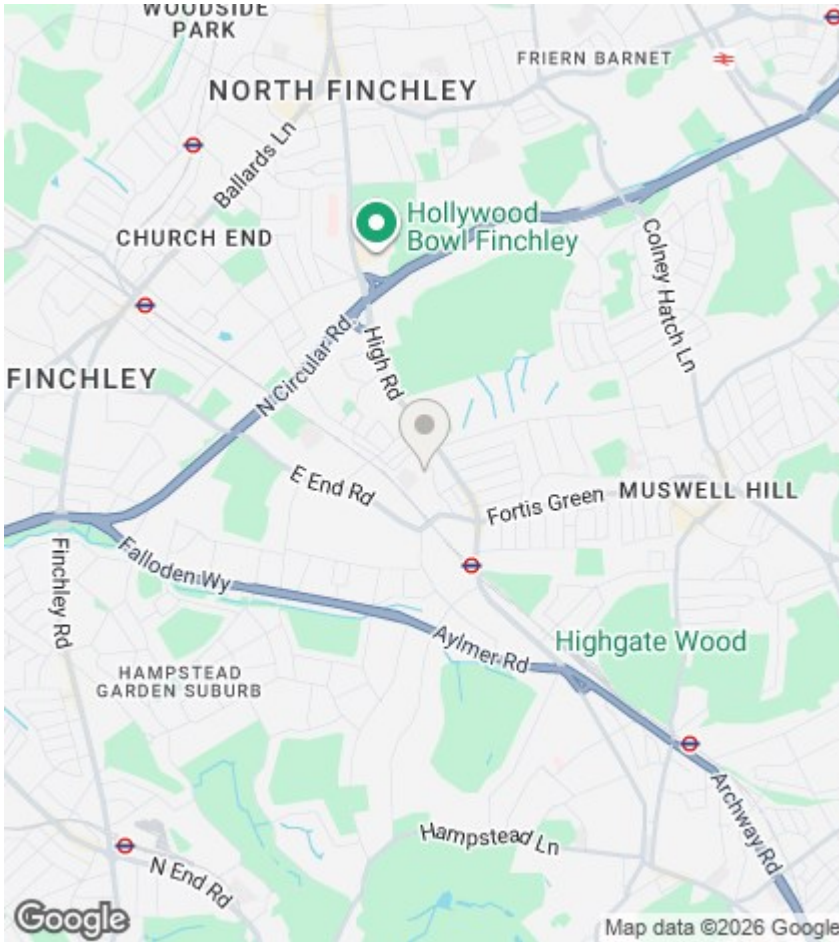
Jeremy Leaf are proud to offer this stylish and functional two-bedroom flat, which presents an ideal opportunity for first-time buyers, small families, or buy-to-let investors. Offered with the benefit of no onward chain for an immediate sale, the accommodation comprises a bright and airy reception room designed to maximise natural light, two well-proportioned bedrooms, and a sleek, contemporary bathroom fitted with modern fixtures. Situated in a highly sought-after location within a thriving community, the property is perfectly positioned for excellent transport links, a vibrant high street, local cafes, and green open parks. Early viewing is highly recommended.



Council Tax Band: D







Directions

Viewings

Viewings by arrangement only. Call 020 8444 5222 to make an appointment.

EPC Rating:

D

Energy Efficiency Rating		Current	Potential
Very energy efficient - lower running costs			
(92 plus) A			
(81-91) B			
(69-80) C			
(55-68) D		67	75
(39-54) E			
(21-38) F			
(1-20) G			
Not energy efficient - higher running costs			
England & Wales		EU Directive 2002/91/EC	