



Oval Road  
Birmingham

burchell  
edwards

# Oval Road Birmingham B24 8PL

for sale offers in excess of  
**£245,000**



## Property Description

Burchell Edwards are delighted to present this well proportioned three-bedroom semi-detached property, offered for sale with no upward chain. Situated in a desirable residential location, this home provides spacious and versatile accommodation, making it an ideal purchase for families, first time buyers or investors.

The ground floor comprises an entrance hallway leading into two generous reception rooms, offering flexible living and dining space, perfect for both everyday family life and entertaining guests. The kitchen is well laid out with ample storage and worktop space, and leads through to a separate family room creating an ideal additional living area perfect for relaxing or entertaining.

To the first floor, the property offers three well proportioned bedrooms, all providing comfortable accommodation, along with a family bathroom.

Externally, the property benefits from both front and rear gardens. The rear garden is of a generous size and features a patio area, perfect for outdoor dining and relaxation, with the remainder laid to lawn offering excellent potential for further landscaping.

Offered for sale with no upward chain, this property MUST be viewed to fully appreciate the space, versatility and potential this property has to offer.

this home provides spacious and versatile accommodation, making it an ideal purchase for families, first time buyers or investors.

The ground floor comprises an entrance hallway leading into two generous reception rooms, offering flexible living and dining space, perfect for both everyday family life and entertaining guests. The kitchen is well laid out with ample storage and worktop space, and leads through to a separate family room creating an ideal additional living area perfect for relaxing or entertaining.

To the first floor, the property offers three well proportioned bedrooms, all providing comfortable accommodation, along with a family bathroom.

Externally, the property benefits from both front and rear gardens. The rear garden is of a generous size and features a patio area, perfect for outdoor dining and relaxation, with the remainder laid to lawn offering excellent potential for further landscaping.

Offered for sale with no upward chain, this property MUST be viewed to fully appreciate the space, versatility and potential this property has to offer.

Burchell Edwards are delighted to present this well proportioned three-bedroom semi-detached property, offered for sale with no upward chain. Situated in a desirable residential location,

Burchell Edwards are delighted to present this well proportioned three-bedroom semi-detached property, offered for sale with no upward chain. Situated in a desirable residential location, this home provides spacious and versatile accommodation, making it an ideal purchase for families, first time buyers or investors.

The ground floor comprises an entrance hallway

leading into two generous reception rooms, offering flexible living and dining space, perfect for both everyday family life and entertaining guests. The kitchen is well laid out with ample storage and worktop space, and leads through to a separate family room creating an ideal additional living area perfect for relaxing or entertaining.

To the first floor, the property offers three well proportioned bedrooms, all providing comfortable accommodation, along with a family bathroom.

Externally, the property benefits from both front and rear gardens. The rear garden is of a generous size and features a patio area, perfect for outdoor dining and relaxation, with the remainder laid to lawn offering excellent potential for further landscaping.

Offered for sale with no upward chain, this property MUST be viewed to fully appreciate the space, versatility and potential this property has to offer.

Externally, the property benefits from both front and rear gardens. The rear garden is of a generous size and features a patio area, perfect for outdoor dining and relaxation, with the remainder laid to lawn offering excellent potential for further landscaping.

Offered for sale with no upward chain, this property MUST be viewed to fully appreciate the space, versatility and potential this property has to offer.



Burchell Edwards are delighted to present this well proportioned three-bedroom semi-detached property, offered for sale with no upward chain. Situated in a desirable residential location, this home provides spacious and versatile accommodation, making it an ideal purchase for families, first time buyers or investors.

The ground floor comprises an entrance hallway leading into two generous reception rooms, offering flexible living and dining space, perfect for both everyday family life and entertaining guests. The kitchen is well laid out with ample storage and worktop space, and leads through to a separate family room creating an ideal additional living area perfect for relaxing or entertaining.

To the first floor, the property offers three well proportioned bedrooms, all providing comfortable accommodation, along with a family bathroom.

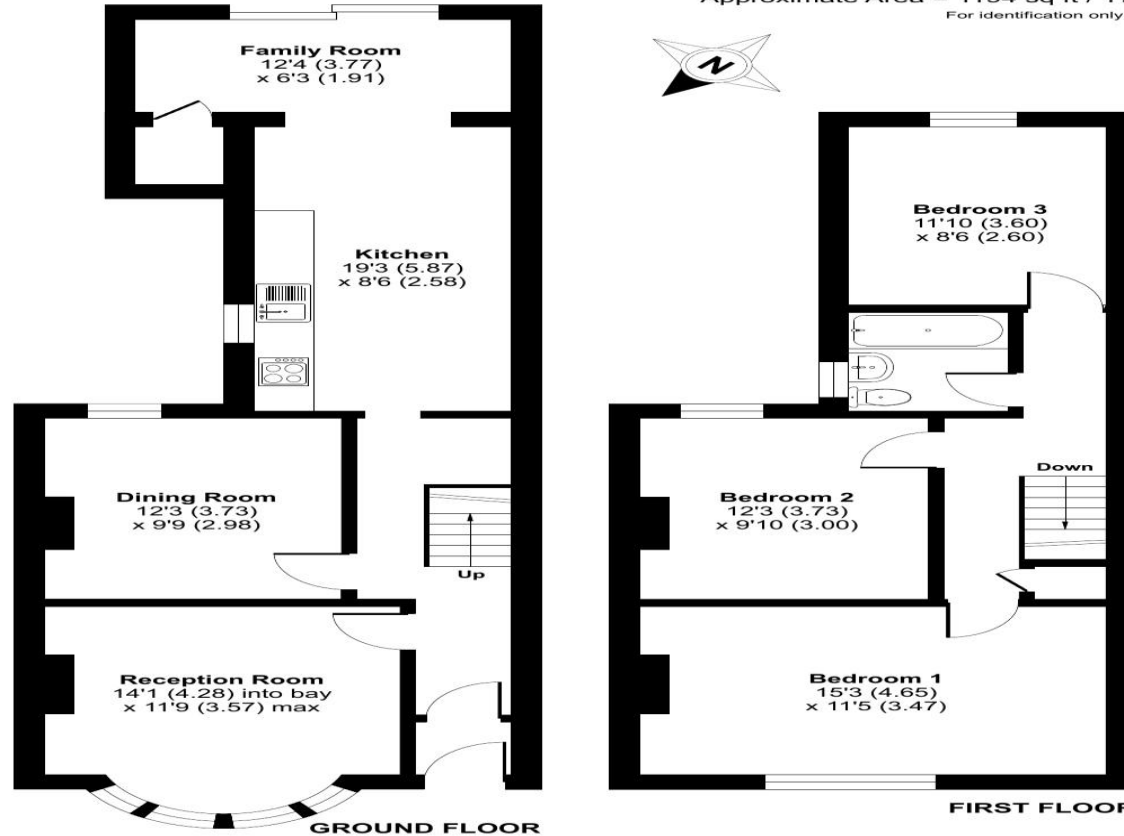






## Oval Road, Birmingham, B24

Approximate Area = 1194 sq ft / 110.9 sq m  
For identification only - Not to scale



Floor plan produced in accordance with RICS Property Measurement 2nd Edition, Incorporating International Property Measurement Standards (IPMS2 Residential). © nichecom 2026. Produced for Flyp Homes Limited. REF: 1434069

To view this property please contact Burchell Edwards on

**T 0121 373 6320**  
**E [erdington@burchelledwards.co.uk](mailto:erdington@burchelledwards.co.uk)**

Unit 3 Queens Court, Gravelly Hill Erdington  
BIRMINGHAM B23 6BJ

EPC Rating: D Council Tax  
Band: B

Tenure: Freehold

**view this property online [burchelledwards.co.uk/Property/ERD207978](https://www.burchelledwards.co.uk/Property/ERD207978)**



1. MONEY LAUNDERING REGULATIONS Intending purchasers will be asked to produce identification documentation at a later stage and we would ask for your co-operation in order that there will be no delay in agreeing the sale. 2. These particulars do not constitute part or all of an offer or contract. 3. The measurements indicated are supplied for guidance only and as such must be considered incorrect. Potential buyers are advised to recheck measurements before committing to any expense. 4. We have not tested any apparatus, equipment, fixtures, fittings or services and it is in the buyers interest to check the working condition of any appliances.

Burchell Edwards is a trading name of Connells Residential which is registered in England and Wales under company number 1489613, Registered Office is Cumbria House, 16-20 Hockliffe Street, Leighton Buzzard, Bedfordshire, LU7 1GN. VAT Registration Number is 500 2481 05.

**See all our properties at [www.burchelledwards.co.uk](https://www.burchelledwards.co.uk) | [www.rightmove.co.uk](https://www.rightmove.co.uk) | [www.zoopla.co.uk](https://www.zoopla.co.uk)**

Property Ref: ERD207978 - 0004