

# Frank Harris & Co.



## Lambeth, SW8

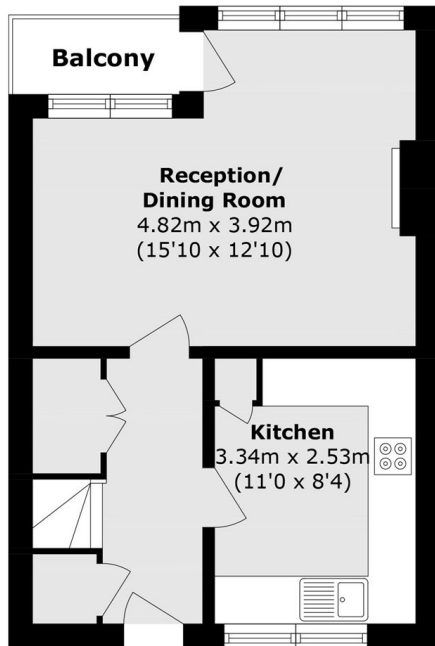
£3,250 pcm

A spacious and beautifully decorated three double bedroom split-level flat with a separate living room, kitchen and private balcony.

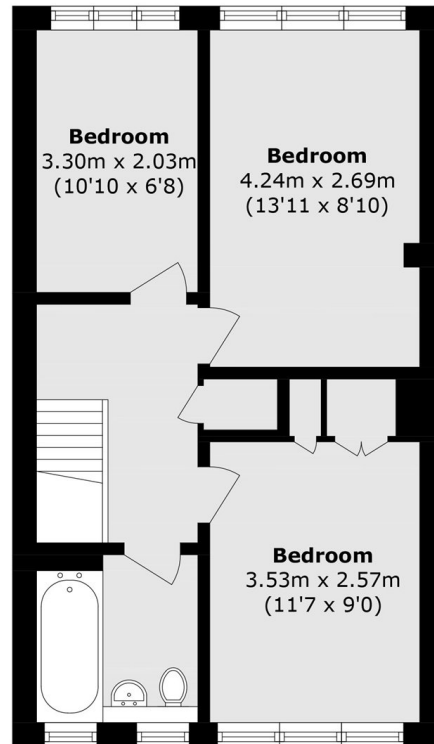
Thessaly Road is located near to the Battersea Power Station and is ideally situated for access into central London from Vauxhall, Battersea Park, Queenstown Road stations and as well as the Northern Line from Battersea Power Station. There are many coffee shops, supermarkets and leisure facilities located nearby.

- Three Bedrooms • Split-Level • Part-Furnished •
- Separate Kitchen • Balcony •

# Frank Harris & Co.



**First Floor**



**Second Floor**

Total area (approx.): 75.6 sq. m (813.7 sq. ft)  
Balcony area (approx): 19.9 sq. m (214.2 sq. ft)

Frank Harris & Co. South Bank and Waterloo  
123 Stamford Street, London,  
SE1 9NN  
020 7590 7100  
[southbanklettings@frankharris.co.uk](mailto:southbanklettings@frankharris.co.uk)

Energy Rating: D. We aim to make our particulars both accurate and reliable. However they are not guaranteed; nor do they form part of an offer or contract. If you require clarification on any points then please contact us, especially if you're traveling some distance to view. Please note that appliances and heating systems have not been tested and therefore no warranties can be given as to their good working order.

