



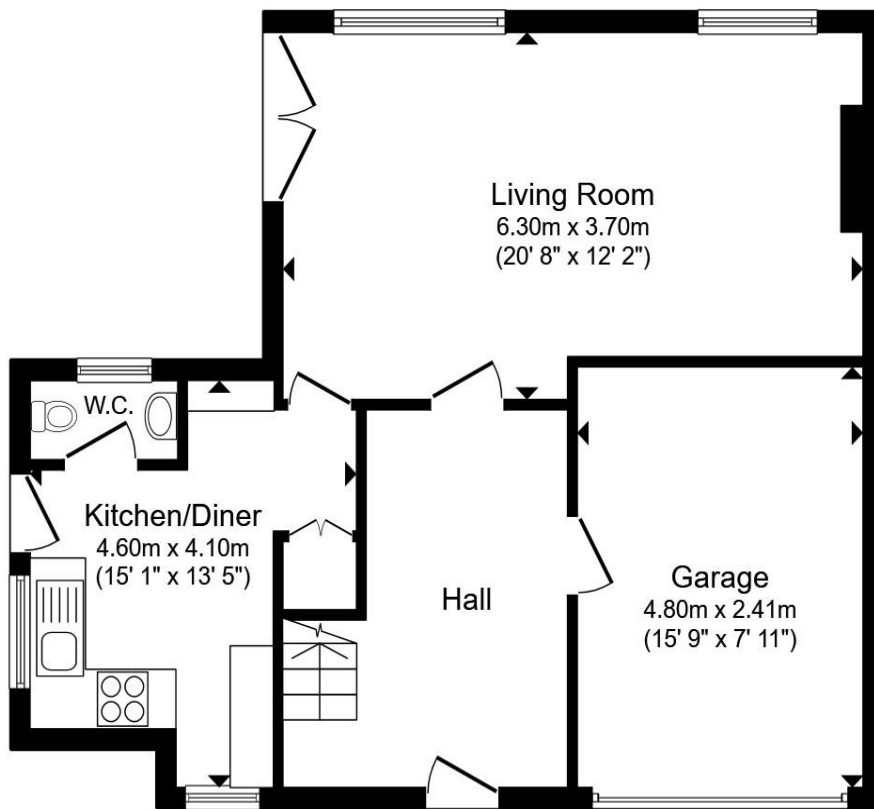
Malthouse Close, Blunsdon Swindon SN26 7BG

welcome to

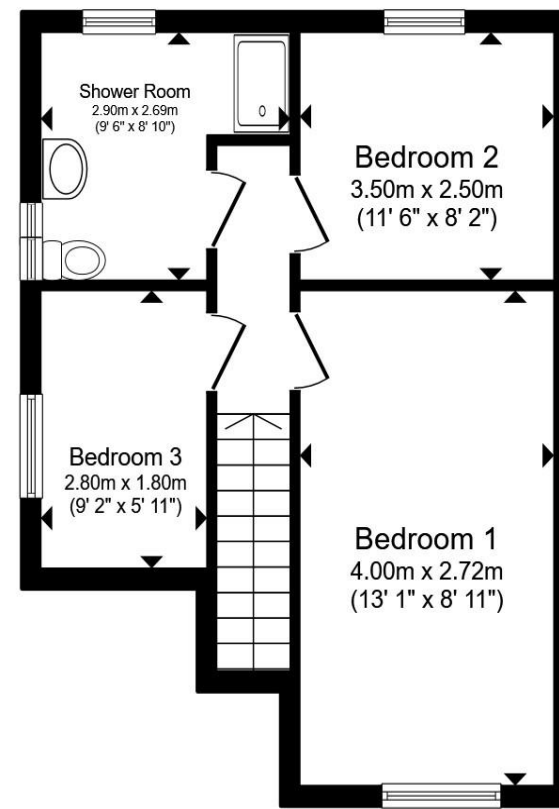
Malthouse Close, Blunston Swindon

Well-presented three-bedroom semi-detached home in the popular village of Blunston, set on a generous corner plot with stunning countryside views towards the Cotswolds. Offering lounge, modern kitchen/diner, cloakroom, wet room, garage, driveway, plus large workshop and shed. No onward chain.





Ground Floor



First Floor

- Entrance Hall**
- Lounge**
- Kitchen/Diner**
- Cloakroom**
- First Floor Landing**
- Bedroom One**
- Bedroom Two**
- Bedroom Three**
- Wet Room**
- Corner Plot Garden**
- Integral Garage**
- Driveway**
- Agents Note**

Total floor area 94.9 m² (1,022 sq.ft.) approx

This floor plan is for illustrative purposes only. It is not drawn to scale. Any measurements, floor areas (including any total floor area), openings and orientation are approximate. No details are guaranteed, they cannot be relied upon for any purpose and they do not form part of any agreement. No liability is taken for any error, omission or misstatement. A party must rely upon its own inspection(s). Powered by www.propertybox.io

welcome to

Malthouse Close, Blunsdon Swindon

- Semi-detached Home
- Three Bedrooms
- Generous Corner Plot with Views to the Cotswolds
- No Onward Chain
- Generous size lounge

Tenure: Freehold EPC Rating: D
Council Tax Band: D

£350,000



Please note the marker reflects the
postcode not the actual property

view this property online allenandharris.co.uk/Property/HWT106616



Property Ref:
HWT106616 - 0004

1. MONEY LAUNDERING REGULATIONS Intending purchasers will be asked to produce identification documentation at a later stage and we would ask for your co-operation in order that there is no delay in agreeing the sale. 2. These particulars do not constitute part or all of an offer or contract. 3. The measurements indicated are supplied for guidance only and as such must be considered incorrect. Potential buyers are advised to recheck measurements before committing to any expense. 4. We have not tested any apparatus, equipment, fixtures or services and it is in the buyers interest to check the working condition of any appliances. 5. Where an EPC, or a Home Report (Scotland only) is held for this property, it is available for inspection at the branch by appointment. If you require a printed version of a Home Report, you will need to pay a reasonable production charge reflecting printing and other costs. 6. We are not able to offer an opinion either written or verbal on the content of these reports and this must be obtained from your legal representative. 7. Whilst we take care in preparing these reports, a buyer should ensure that his/her legal representative confirms as soon as possible all matters relating to title including the extent and boundaries of the property and other important matters before exchange of contracts.

Allen & Harris is a trading name of Sequence (UK) Limited which is registered in England and Wales under company number 4268443, Registered Office is Cumbria House, 16-20 Hockliffe Street, Leighton Buzzard, Bedfordshire, LU7 1GN. VAT Registration Number is 500 2481 05.


allen & harris



01793 762407



Highworth@allenandharris.co.uk



40A High Street, HIGHWORTH, Wiltshire, SN6
7AQ



allenandharris.co.uk