



## New Castle Street, £200,000

- No onward chain
- Living room with media wall
- Beautifully presented throughout
- Ideal family home
- Located in Merthyr town centre
- EPC Rating: D



 3  1  1

 **peter  
alan**

01685 722223  
[merthytydfil@peteralan.co.uk](mailto:merthytydfil@peteralan.co.uk)



## About the property

Situated in the heart of Merthyr Tydfil town centre, this beautifully presented mid-terraced property offers a fantastic opportunity for families and investors alike. With a wide range of local amenities, schools, and excellent transport links all within easy reach, the location is both convenient and desirable.

Upon entering, you are welcomed by a bright and inviting living room, leading through to a separate dining area which provides an ideal space for both everyday family living and entertaining.

To the rear, the standout feature of the home is the stunning, modern kitchen. Thoughtfully designed, it boasts a central island, ample storage and worktop space, and patio doors that open directly onto the garden—perfect for indoor-outdoor living.

Upstairs, the property offers three well-proportioned bedrooms, providing flexible accommodation for growing families or those working from home, along with a stylish and generously sized family bathroom.

Externally, the rear garden has been designed for low maintenance, featuring artificial grass, making it an



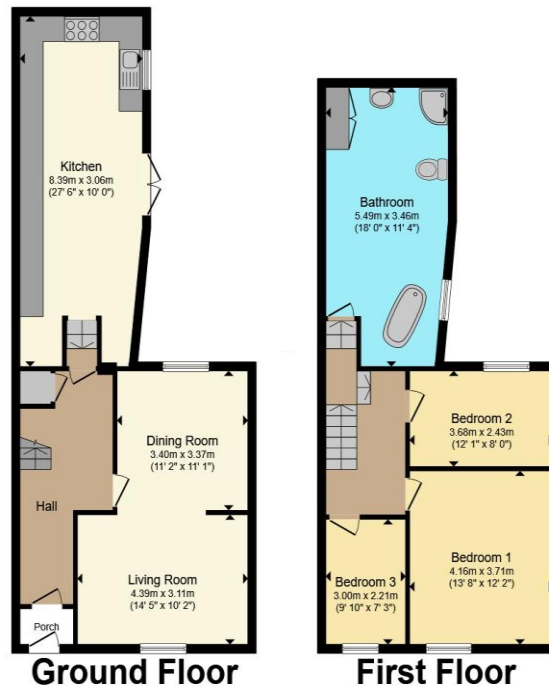
 peter  
alan

Accommodation

01685 722223

merthyrdfil@peteralan.co.uk

## Floorplan



Total floor area 122.4 m<sup>2</sup> (1,318 sq.ft.) approx

This floor plan is for illustrative purposes only. It is not drawn to scale. Any measurements, floor areas (including any total floor area), openings and orientation are approximate. No details are guaranteed, they cannot be relied upon for any purpose and they do not form part of any agreement. No liability is taken for any error, omission or misstatement. A party must rely upon its own inspection(s). Powered by [www.propertybox.io](http://www.propertybox.io)



## Important Information

Note while we endeavour to make our sales details accurate and reliable, if there is any point which is of particular interest to you, please contact the office and we will be pleased to confirm the position for you. We have not personally tested any apparatus, equipment, fixtures, fittings or services and cannot verify they are in working order or fit for their purposes. Nothing in these particulars is intended to indicate that carpets or curtains, furnishings or fittings, electrical goods (whether wired or not). Gas fires or light fittings or any other fixtures not expressly included form part of the property offered for sale. This computer generated Floorplan, if applicable, is intended as a general guide to the layout and design of the property. It is not to scale and should not be relied upon for dimensions. Tenure: We cannot confirm the tenure of the property as we have not had access to the legal documents. The buyer is advised to obtain verification from their solicitor or surveyor.

Peter Alan Limited is registered in England and Wales under company number 2073153, Registered Office is Cumbria House, 16-20 Hockliffe Street, Leighton Buzzard, Bedfordshire, LU7 1GN. VAT Registration Number is 500 2481 05. For activities relating to regulated mortgages and non-investment insurance contracts, Peter Alan Limited is an appointed representative of Connells Limited which is authorised and regulated by the Financial Conduct Authority. Connells Limited's Financial Services Register number is 302221. Most buy-to-let

