



SALTERFORD ROAD, SW17

£450,000

- Victorian flat
- Three bedrooms
- Chain free
- Separate living room
- Private garden
- Energy rating: C





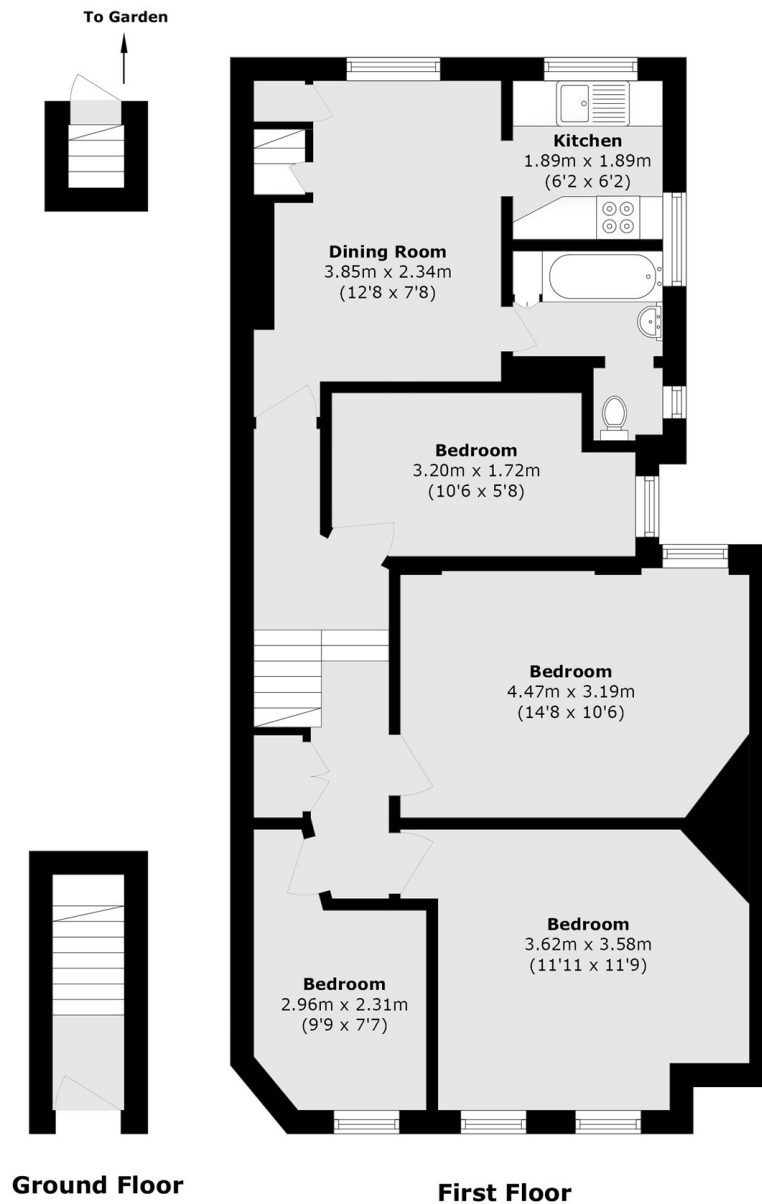
ABOUT THE HOME

This three-bedroom maisonette is located on Salterford Road, offering approximately 853 sq ft of accommodation. Providing a fantastic opportunity to renovate to your own style. Internally, the property features three bedrooms, a welcoming reception room, a separate kitchen, a family bathroom, and its own private entrance, offering a versatile living space throughout. Outside, there is a private garden.

Conveniently located in the heart of Tooting, with easy access to Tooting Broadway Underground Station and Tooting Railway Station, The vibrant amenities of Tooting High Street, including an array of independent cafés, restaurants, shops, and leisure facilities, are all close at hand.







Total area (approx.): 78.8 sq. m (848.2 sq. ft)

JACKSONS TOOTING

3 Upper Tooting Road, London,
SW17 7TS
Sales: 020 8487 3175
Lettings: 020 8487 3176

Energy Rating: We aim to make our particulars both accurate and reliable. However they are not guaranteed; nor do they form part of an offer or contract. If you require clarification on any points then please contact us, especially if you're traveling some distance to view. Please note that appliances and heating systems have not been tested and therefore no warranties can be given as to their good working order.