



**Holly House Fiskerton Road, Rolleston,
Newark, NG23 5SH**

Offers In Excess Of £875,000

Tel: 01636 816200

 **RICHARD
WATKINSON
PARTNERS**
Surveyors, Estate Agents, Valuers, Auctioneers

- A Handsome Period Home
- 2,500 Square Feet
- Breakfast Kitchen, Utility, GF W/C
- Superb Modern Bathroom
- Delightful Landscaped Gardens
- Many Character Features
- 3 Large Reception Rooms
- 4 Double Bedrooms
- Fantastic 2.14 Acre Plot in Total
- 1.75 Acre Grass Paddock

A unique opportunity to purchase this handsome period home with many original character features, occupying a wonderful 2.14 acre plot including a 1.75 acre paddock to the rear.

This beautiful period home offers spacious accommodation extending to approximately 2,500 square feet, brimming with character features including a stunning entrance porch with original timber panelled door into the welcoming hallway. There are 3 large reception rooms; a dual aspect dining room with open fire, a large sitting room with French doors onto gardens and a spacious family room with inglenook style fireplace and log burner. There is a modern breakfast kitchen and a useful utility room with ground floor w/c off whilst to the 1st floor are 4 large double bedrooms and a fantastic modern bathroom.

The plot is a particular feature of the property, with delightful formal gardens extending to around 1/4 acre and including sweeping lawns and generous patio seating areas. A gravelled driveway provides ample parking and leads to the paddock at the rear, extending to approximately 1.75 acres.

Viewing comes highly recommended!

ACCOMMODATION

A large original panelled entrance door leads into the entrance hall.

ENTRANCE HALL

An attractive entrance hall with spindled staircase leading to the first floor, original stripped wooden floorboards, dado rail, central heating radiator and doors to rooms including an original pine door into the sitting room. A door down to the cellar where there is power and light.

SITTING ROOM

A spacious reception room with two uPVC double glazed windows to the front aspect and uPVC double glazed French doors leading onto the gardens. There is a fitted bookcase, a door into the family room, dado rail, ceiling rose and a feature marble fireplace housing a coal effect gas fire.

DINING ROOM

Of excellent proportions, this lovely dual aspect reception room has a dado rail and central heating radiator plus uPVC double glazed windows to both the front and rear aspects. The focal point of the room is a large open fireplace with slate hearth and brass fender.

FAMILY ROOM

A fantastic and versatile third reception room with tiled flooring throughout, central heating radiator, uPVC double glazed French doors onto the gardens and a feature inglenook style fireplace with timber surround, exposed brick insert housing a floor standing cast iron log burner.

BREAKFAST KITCHEN

Fitted with a range of base and wall units with granite worktops, underlighting, tiled splashbacks and an inset composite single drainer sink with mixer tap, two integrated refrigerators, dishwasher by Baumatic, corner pull-out shelving, integrated Bosch microwave and a recess for a range style cooker with stainless steel splashback and chimney extractor hood over. A Rangemaster Toledo electric and gas range cooker is available by way of negotiation. There is tiled flooring throughout, two uPVC double glazed windows to the side aspect and a central heating radiator.

UTILITY ROOM

A large and useful utility space fitted with a range of cottage style base and wall cabinets with rolled edge worktops and tiled splashbacks. There is an inset stainless steel single drainer sink with mixer tap and space for appliances including plumbing for a washing machine. A composite door leads onto the rear garden, there are two uPVC double glazed windows, the Worcester combination boiler is concealed within one of the cabinets and a central heating radiator. There is a useful built-in cloaks cupboard with shelving and hanging rail.

GROUND FLOOR W/C

Fitted with a modern suite including a dual flush back-to-wall toilet and a wall mounted wash basin with mixer tap and tiled splashbacks. Tiled flooring and extractor fan.

FIRST FLOOR LANDING

A spacious galleried landing with an access hatch to the roof space, dado rail, two uPVC double glazed windows to the front aspect and doors to bedrooms.

BEDROOM ONE

A large double bedroom with a central heating radiator, two uPVC double glazed windows to the front aspect and a door onto the secondary landing.

SECONDARY LANDING

With two central heating radiators, two uPVC double glazed windows to the side aspect and a turning staircase leading back to the ground floor.

BEDROOM TWO

A lovely dual aspect double bedroom with uPVC double glazed windows to the front and rear aspects plus a central heating radiator and a door into the en-suite.

EN-SUITE SHOWER ROOM

Fitted in white with a modern suite including a dual flush toilet, a wall mounted wash basin with mixer tap and a quadrant style shower cubicle with glazed sliding doors and mains fed

rainfall shower. There is tiling to the floor and to the walls, an extractor fan and a chrome towel radiator.

BEDROOM THREE

With laminate floor, central heating radiator and a uPVC double glazed window to the rear aspect.

BEDROOM FOUR

A double bedroom with a central heating radiator, a uPVC double glazed window to the side aspect and a built-in airing cupboard.

MAIN BATHROOM

A large and superbly fitted principal bathroom with tiled walls and tiled flooring throughout plus spotlights to the ceiling, access hatch to the roof space, a uPVC double glazed obscured window to the side and a chrome towel radiator. The bathroom is fitted with a floating vanity unit with countertop wash bowl and large pillar mixer tap, a deep fill dual ended bath within a tiled surround, a floating concealed cistern toilet with chrome flush plate and shower with mosaic tiled tray, mains fed waterfall shower and additional sprayhose.

DRIVEWAY PARKING

A gravelled driveway leads from the front of the property along the side of the main garden turning into the rear of the main garden to provide ample gravelled driveway parking.

GARDENS

The property occupies a delightful plot, with formal gardens extending to approximately 0.26 acres including sweeping lawns across the front and to the side, edged with mature beds and borders. Across the rear is an extensive paved patio seating area, ideal for entertaining and leading to further garden to the side, affording an exceptionally good level of privacy and providing a further lawn and paved patio seating area with pergola and climbing plants.

THE PADDOCK

The gravelled driveway continues via double five bar timber gates into the paddock which is situated at the rear of the property and extends to approximately 1.75 acres, is mainly set to grazing and includes a mains water supply. At the entrance of the paddock is a useful timber outbuilding/workshop of approximately 9m X 3m with power and light.

COUNCIL TAX

The property is registered as council tax band G.

VIEWINGS

By appointment with Richard Watkinson & Partners.

ADDITIONAL INFORMATION

Once an offer is accepted, there will be a small charge for our biometric Anti Money Laundering compliance check of £14 + VAT per purchaser.

Please see the links below to check for additional information regarding environmental criteria (i.e. flood assessment), school Ofsted ratings, planning applications and services such as broadband and phone signal. Note Richard Watkinson & Partners has no affiliation to any of the below agencies and cannot be responsible for any incorrect information provided by the individual sources.

Flood assessment of an area: _

<https://check-long-term-flood-risk.service.gov.uk/risk#>

Broadband & Mobile coverage:-

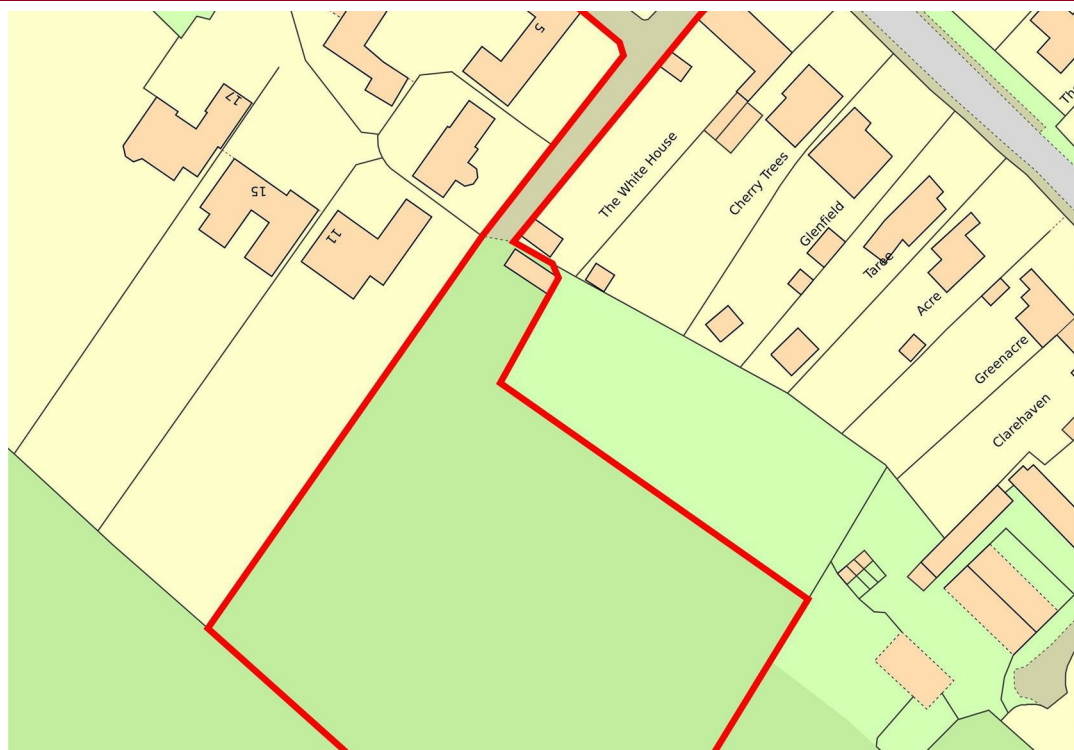
<https://checker.ofcom.org.uk/en-gb/broadband-coverage>

School Ofsted reports:-

<https://reports.ofsted.gov.uk/>

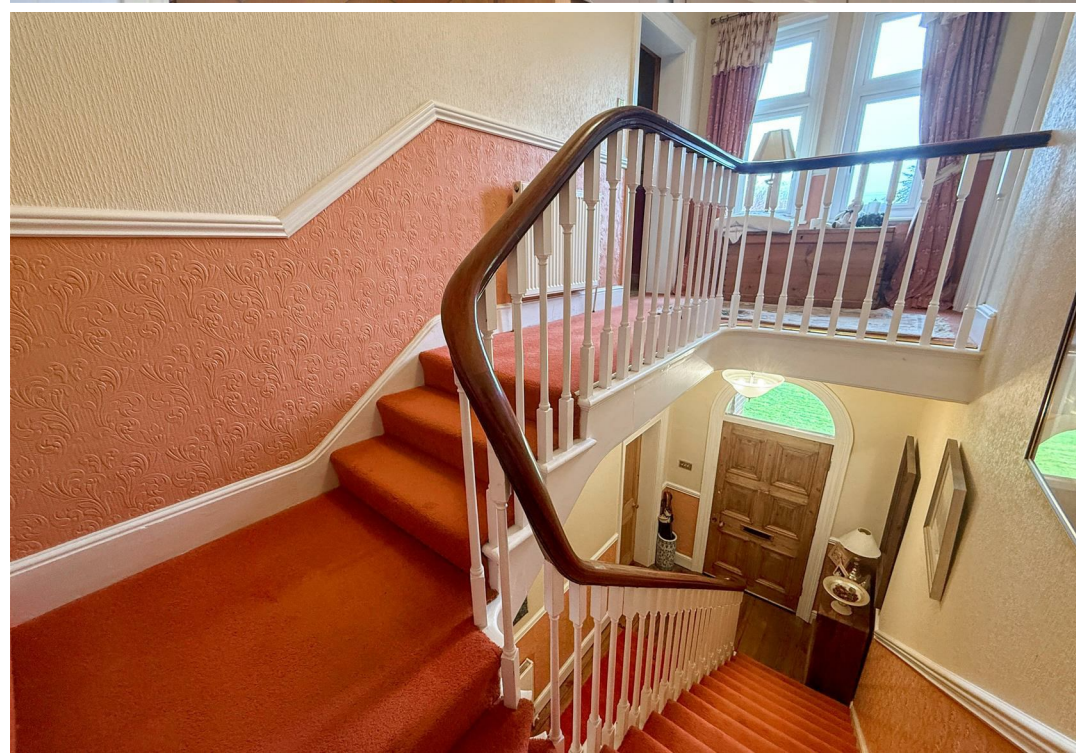
Planning applications:-

<https://www.gov.uk/search-register-planning-decisions>













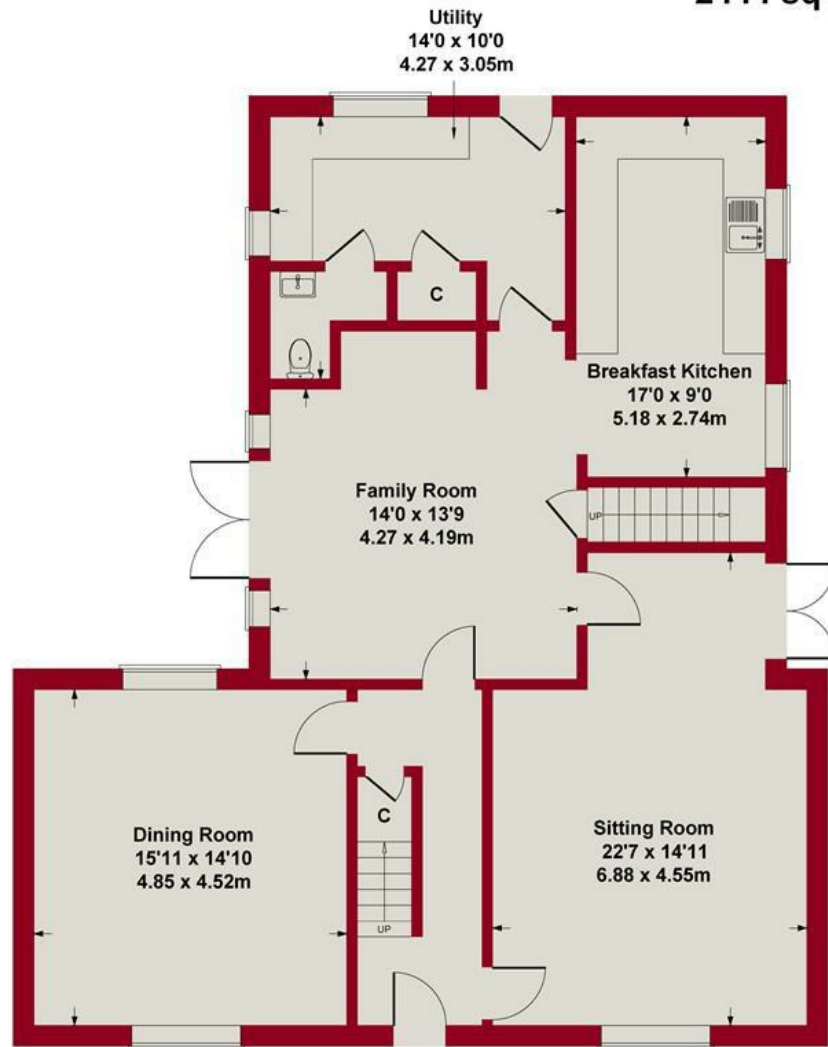




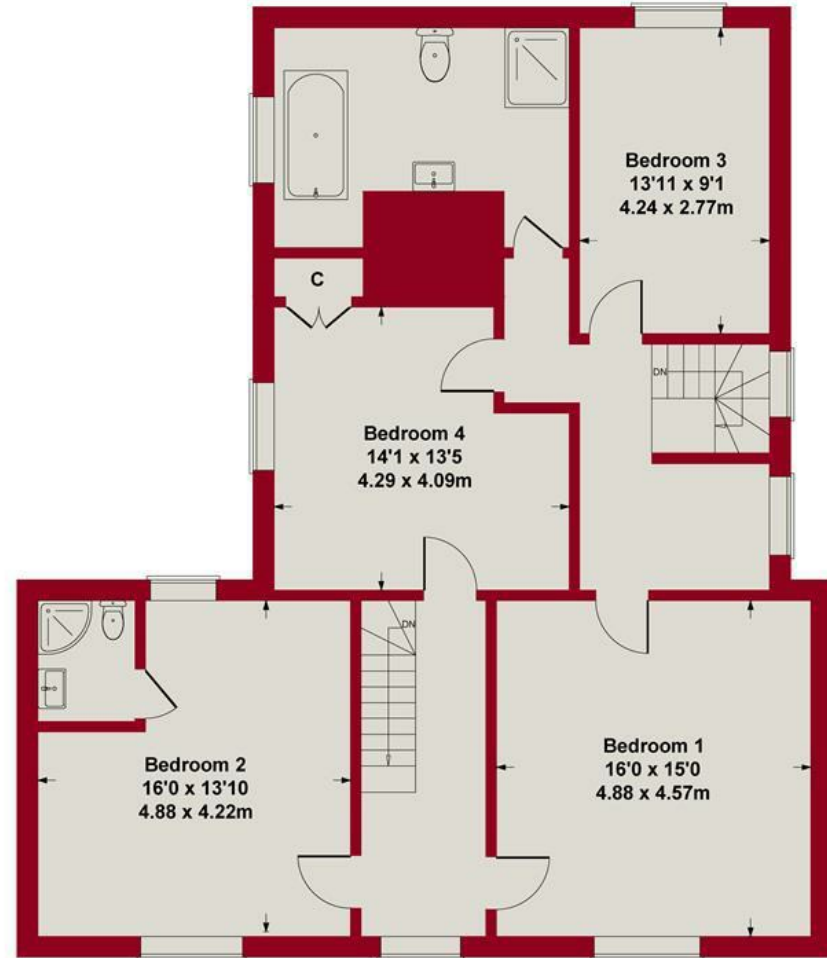




Approximate Gross Internal Area
2444 sq ft - 227 sq m



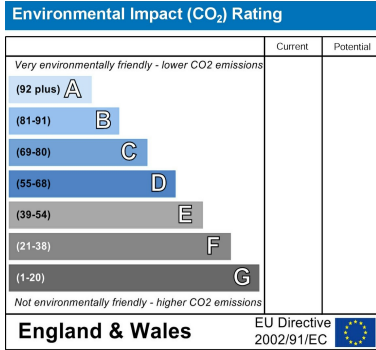
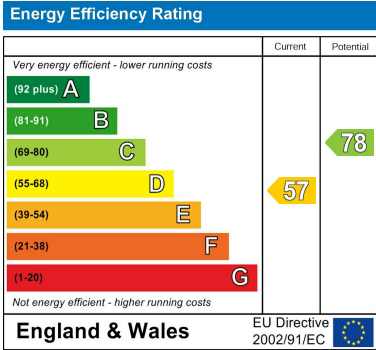
GROUND FLOOR



FIRST FLOOR

Whilst every attempt has been made to ensure the accuracy of the floor plan contained here, measurements of doors, windows, rooms and any other items are approximate and no responsibility is taken for any error, omission, or mis-statement. This plan is for illustrative purposes only and should be used as such by any prospective purchaser or tenant. The services, systems and appliances shown have not been tested and no guarantee as to their operability or efficiency can be given.

Copyright V360 Ltd 2024 | www.houseviz.com



These particulars, whilst believed to be accurate are set out as a general outline only for guidance and do not constitute any part of an offer or contract. Intending purchasers should not rely on them as statements of representation of fact, but must satisfy themselves by inspection or otherwise as to their accuracy. No person in this firm's employment has the authority to make or give any representation or warranty in respect of the property. Any fixtures and fittings not mentioned in these details are excluded from the sale price. No services or appliances which may have been included in these details have been tested by the selling agent and therefore cannot be guaranteed to be in good working order.

As part of the service we offer we may recommend ancillary services to you such as mortgage advice, solicitors and surveyors which we believe will help with your property transaction. We wish to make you aware that should you decide to proceed we may receive a referral fee or equivalent. This could be a fee, commission, payment or other reward. We will not refer your details unless you have provided consent for us to do so. You are not under any obligation to provide us with your consent or to use any of these services. You are also free to choose an alternative provider.

Thinking of selling? For a FREE no obligation quotation call 01636 816200



Richard Watkinson & Partners is the trading name of Richard Watkinson Ltd.
Registered in England. Ltd Registration number: 07140024

20 King Street,
Southwell NG25 0EH
Tel: 01636 816200
Email: southwell@richardwatkinson.co.uk



Surveyors, Estate Agents, Valuers, Auctioneers