



Connells

St. Martins Street
Peterborough



Property Description

This well-arranged four-bedroom semi-detached property presents an excellent investment opportunity, offered with established HMO (House in Multiple Occupation) status, making it ideal for investors seeking strong and consistent rental returns.

The ground floor comprises a welcoming entrance hall leading into a comfortable front bedroom. To the rear, a separate dining room offers additional versatile living or social accommodation, connecting conveniently to the fitted kitchen. The kitchen is positioned toward the back of the property, giving access to a rear lobby and a bathroom. This layout supports practical shared living arrangements, with good separation between communal areas.

To the first floor, the property offers three well-proportioned bedrooms arranged off a central landing, making the layout highly suitable for multi-tenant occupancy. Each room benefits from natural light and a functional configuration, enhancing tenant appeal.

Externally, the property benefits from an enclosed rear garden, offering valuable outdoor space for occupants to relax and enjoy, while also providing additional privacy and security.

This is a turnkey investment opportunity in a desirable format, offering both immediate income potential and long-term growth.

Entrance Hall

Door to side and stairs to first floor.

Bedroom Four

Windows to the front and side.

Dining Room

Windows to the rear and side and storage cupboard.

Kitchen

Window and door to side, high and low level storage with worktops over, door to lobby, tiled walls and flooring, stainless steel sink/drainer with mixer tap.

Lobby

Window to side, door to bathroom.

Bathroom

Window to side, tiled walls and flooring, bath with shower over, WC and wash hand basin.

First Floor

Bedroom One

Window to the front, radiator and carpet.

Bedroom Two

Window to the rear, radiator and carpet.

Bedroom Three

Window to the rear, radiator and carpet.

Outside

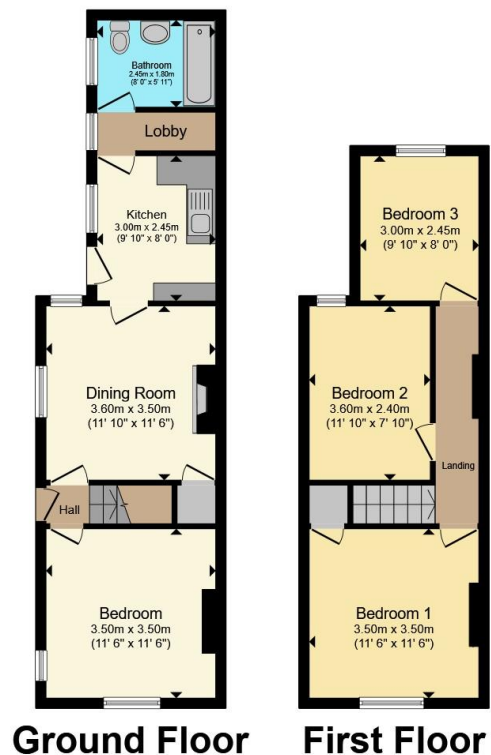
Rear Garden

Laid to lawn and enclosed.

Front

Dwarf brick wall, side access and small garden.





Total floor area 78.7 m² (848 sq.ft.) approx

This floor plan is for illustrative purposes only. It is not drawn to scale. Any measurements, floor areas (including any total floor area), openings and orientation are approximate. No details are guaranteed, they cannot be relied upon for any purpose and they do not form part of any agreement. No liability is taken for any error, omission or misstatement. A party must rely upon its own inspection(s). Powered by www.propertybox.io



To view this property please contact Connells on

T 01733 314 775

E peterborough@connells.co.uk

14 Cowgate
PETERBOROUGH PE1 1NA

EPC Rating: D Council Tax
Band: A

view this property online connells.co.uk/Property/PBO312931

Tenure: Freehold



1. MONEY LAUNDERING REGULATIONS Intending purchasers will be asked to produce identification documentation at a later stage and we would ask for your co-operation in order that there will be no delay in agreeing the sale. 2. These particulars do not constitute part or all of an offer or contract. 3. The measurements indicated are supplied for guidance only and as such must be considered incorrect. Potential buyers are advised to recheck measurements before committing to any expense. 4. We have not tested any apparatus, equipment, fixtures, fittings or services and it is in the buyers interest to check the working condition of any appliances.

Connells Residential is registered in England and Wales under company number 1489613, Registered Office is Cumbria House, 16-20 Hockliffe Street, Leighton Buzzard, Bedfordshire, LU7 1GN. VAT Registration Number is 500 2481 05.

See all our properties at www.connells.co.uk | www.rightmove.co.uk | www.zoopla.co.uk

Property Ref: PBO312931 - 0004