



Connells

Beatrice Avenue
Keyham Plymouth



Property Description

We are delighted to introduce this three bedroom period property to the market, situated in a popular residential location. Benefiting from two double bedrooms, one single bedroom, two reception rooms, kitchen, bathroom, enclosed rear courtyard and on-street parking.

Located in Keyham, close to a host of local amenities, local parks, well-regarded schools and main transport links whilst being a short drive to the city centre.

As you enter this home, you are welcomed with a spacious bright and airy lounge with a beautiful bay window which flows effortlessly into a separate dining room, a perfect space for hosting and entertaining, followed by the kitchen with matching wall and base units and access to an enclosed rear courtyard.

Continuing the good condition, on the first floor you will find two good-sized double bedrooms, a single bedroom and completing this home you have a family bathroom comprising bath with overhead shower, hand basin and W.C.

Externally, this property offers an enclosed rear courtyard and on-street parking to the front.

This property is the perfect opportunity for a first-time buyer or growing family, appealing to a wide range of buyers.

EARLY VIEWINGS ADVISED!

Ground Floor

Lounge

12' 6" maximum x 11' 11" maximum (3.81m maximum x 3.63m maximum)

Dining Room

13' maximum x 9' 4" maximum (3.96m maximum x 2.84m maximum)

Kitchen

9' 3" maximum x 7' 10" maximum (2.82m maximum x 2.39m maximum)

First Floor

Bedroom One

13' 1" maximum x 9' 5" maximum (3.99m maximum x 2.87m maximum)

Bedroom Two

12' 5" maximum x 7' 11" maximum (3.78m maximum x 2.41m maximum)

Bedroom Three

8' 6" x 6' 11" (2.59m x 2.11m)

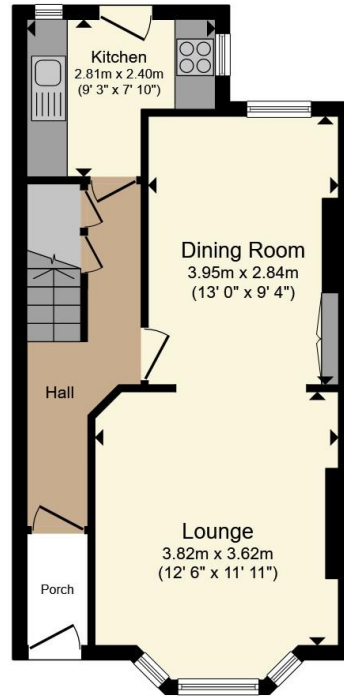
Bathroom

9' 3" x 4' 3" (2.82m x 1.30m)

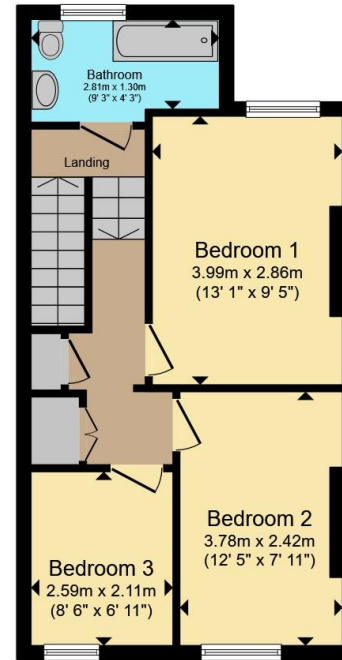








Ground Floor



First Floor

Total floor area 80.2 m² (863 sq.ft.) approx

This floor plan is for illustrative purposes only. It is not drawn to scale. Any measurements, floor areas (including any total floor area), openings and orientation are approximate. No details are guaranteed, they cannot be relied upon for any purpose and they do not form part of any agreement. No liability is taken for any error, omission or misstatement. A party must rely upon its own inspection(s). Powered by www.propertybox.io



To view this property please contact Connells on

T 01752 674 467
E plymouth@connells.co.uk

32 Mannamead Road
PLYMOUTH PL4 7AA

EPC Rating: D Council Tax
Band: A

Tenure: Freehold

view this property online connells.co.uk/Property/PLH313639



1. MONEY LAUNDERING REGULATIONS Intending purchasers will be asked to produce identification documentation at a later stage and we would ask for your co-operation in order that there will be no delay in agreeing the sale. 2. These particulars do not constitute part or all of an offer or contract. 3. The measurements indicated are supplied for guidance only and as such must be considered incorrect. Potential buyers are advised to recheck measurements before committing to any expense. 4. We have not tested any apparatus, equipment, fixtures, fittings or services and it is in the buyers interest to check the working condition of any appliances.

Connells Residential is registered in England and Wales under company number 1489613, Registered Office is Cumbria House, 16-20 Hockliffe Street, Leighton Buzzard, Bedfordshire, LU7 1GN. VAT Registration Number is 500 2481 05.

See all our properties at www.connells.co.uk | www.rightmove.co.uk | www.zoopla.co.uk

Property Ref: PLH313639 - 0002