

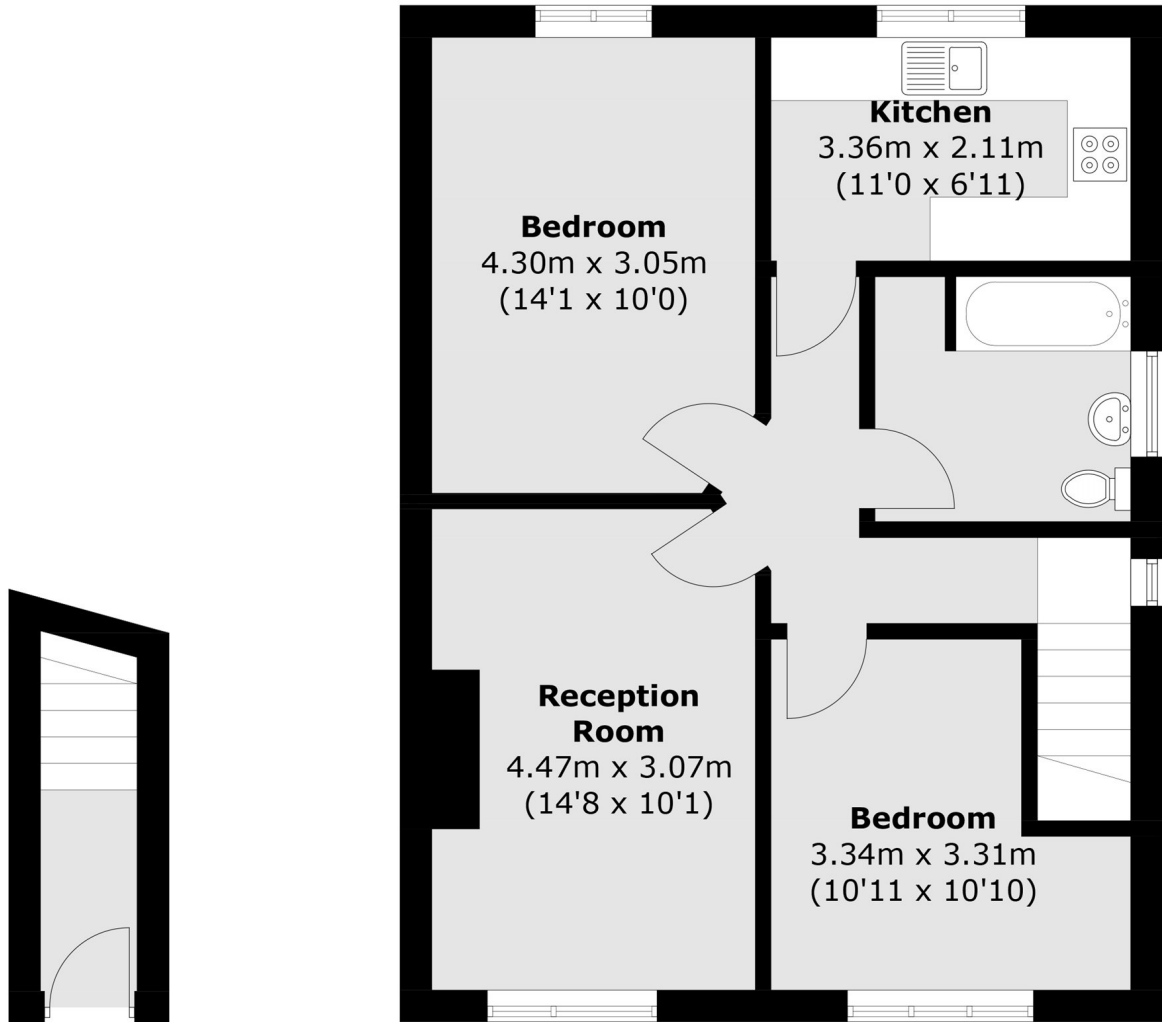


Gifford Gardens, W7

£425,000

This well-maintained two bedroom first floor maisonette has a spacious living room, a separate kitchen and an attractive private garden.

Located close to the local amenities on Greenford Avenue and bus routes to Ealing and Greenford. The property is within catchment of a number of good local schools including Mayfield primary and 0.9 mile from Hanwell (Elizabeth line) station.



Ground Floor

First Floor

Total area (approx.): 62.3 sq. m (670.6 sq. ft)

Robertson Smith & Kempson Hanwell Sales
69 Greenford Avenue,
London, W7 1LL
020 8566 2339
hanwellsales@robertsonsmithandkempson.co.uk

Energy Rating: C. We aim to make our particulars both accurate and reliable. However they are not guaranteed; nor do they form part of an offer or contract. If you require clarification on any points then please contact us, especially if you're traveling some distance to view. Please note that appliances and heating systems have not been tested and therefore no warranties can be given as to their good working order.