



Pinkmove

Steeplechase Road

Guide Price £310,000 - £320,000

- Guide Price £310,000 - £320,000
- Master bedroom with en-suite
- Ground floor cloakroom & utility room
- Enclosed rear garden with artificial lawn
- Off-road parking for two vehicles
- Single garage
- EPC Rating: Awaited



3 2 2

Pinkmove

01633 746088
team@pinkmove.co.uk



About the property

We are pleased to present this attractive three-bedroom detached home, ideally located on Steeplechase Road, Newport.

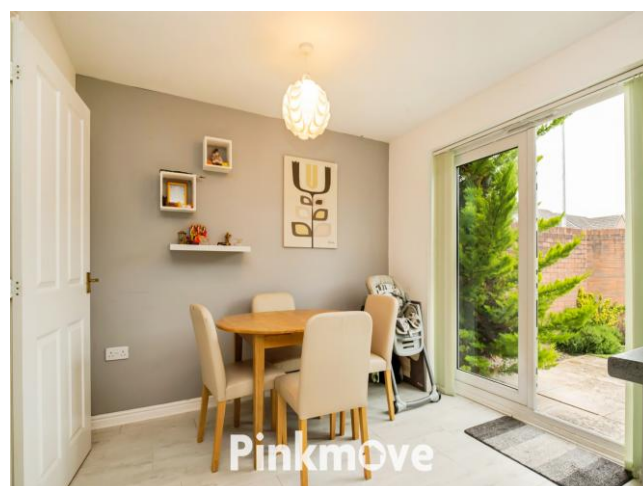
The property is well positioned close to local amenities, well-regarded schools, and a direct bus route to Newport City Centre. It also offers excellent access to the M4 (J28), providing easy travel to Cardiff, Bristol, and surrounding areas. Tredegar House and its extensive parkland are just a stone's throw away.

To the rear, the property benefits from off-road parking for two vehicles and a single garage with access to the garden. The home also enjoys a pleasant outlook over a large green area.

Internally, the property comprises a spacious entrance hall with access to all ground floor rooms. The lounge is well-presented and generously sized, while the modern kitchen/dining room offers ample storage, space for appliances, and room for a dining table. Patio doors lead out to the rear garden, and there is also a useful utility area and a ground floor cloakroom.

Upstairs, there are three well-proportioned bedrooms, including a master with en-suite, as well as a family bathroom fitted with a white suite.

The rear garden is fully enclosed and well maintained, featuring a large artificial lawn and space for outdoor seating and entertaining.





Accommodation

Lounge

Kitchen/Dining Room

Utility

Wc

Bedroom 1

En-Suite

Bedroom 2

Bedroom 3

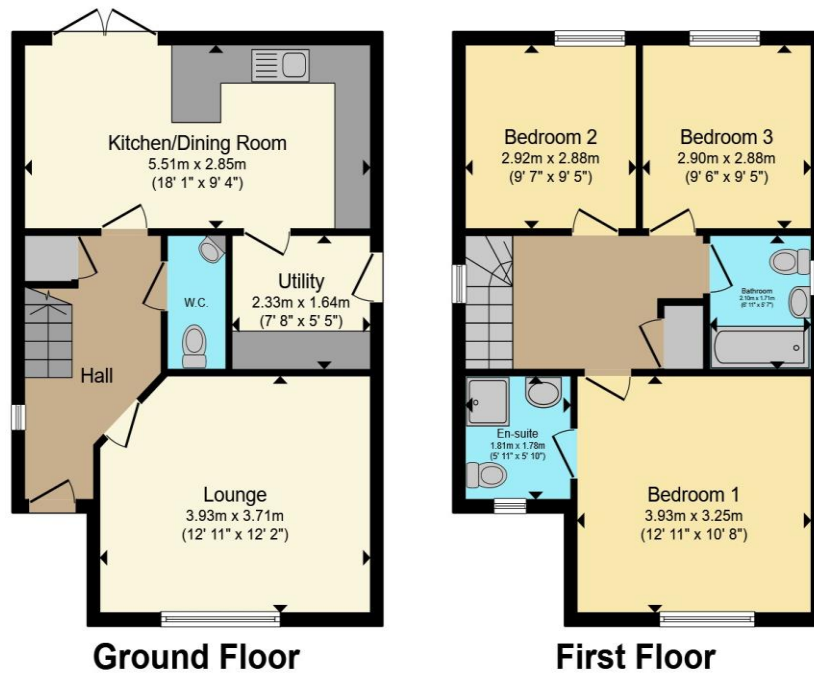
Bathroom

01633 746088

team@pinkmove.co.uk

Pinkmove

Floorplan



Total floor area 97.9 sq.m. (1,054 sq.ft.) approx

This floor plan is for illustrative purposes only. It is not drawn to scale. Any measurements, floor areas (including any total floor area), openings and orientation are approximate. No details are guaranteed, they cannot be relied upon for any purpose and they do not form part of any agreement. No liability is taken for any error, omission or misstatement. A party must rely upon its own inspection(s). Powered by www.localagent.com

Pinkmove

Important Information

Note while we endeavour to make our sales details accurate and reliable, if there is any point which is of particular interest to you, please contact the office and we will be pleased to confirm the position for you. We have not personally tested any apparatus, equipment, fixtures, fittings or services and cannot verify they are in working order or fit for their purposes. Nothing in these particulars is intended to indicate that carpets or curtains, furnishings or fittings, electrical goods (whether wired or not). Gas fires or light fittings or any other fixtures not expressly included form part of the property offered for sale. This computer generated Floorplan, if applicable, is intended as a general guide to the layout and design of the property. It is not to scale and should not be relied upon for dimensions. Tenure: We cannot confirm the tenure of the property as we have not had access to the legal documents. The buyer is advised to obtain verification from their solicitor or surveyor.

Peter Alan Limited is registered in England and Wales under company number 2073153, Registered Office is Cumbria House, 16-20 Hockliffe Street, Leighton Buzzard, Bedfordshire, LU7 1GN. VAT Registration Number is 500 2481 05. For activities relating to regulated mortgages and non-investment insurance contracts, Peter Alan Limited is an appointed representative of Connells Limited which is authorised and regulated by the Financial Conduct Authority. Connells Limited's Financial Services Register number is 302221. Most buy-to-let

