



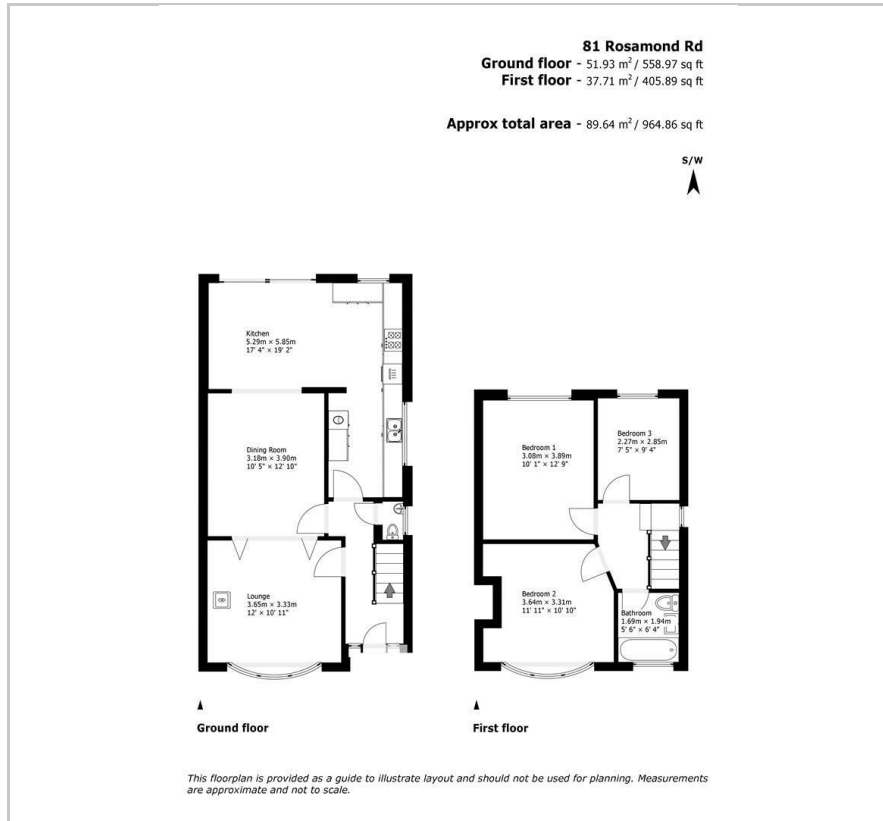
**81 Rosamond Road**

, Bedford, MK40 3UQ

**£485,000**

3 1 3 D

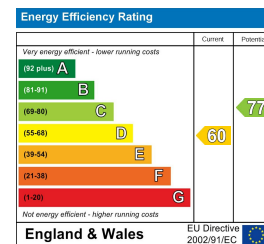
## Floor Plan



## Area Map

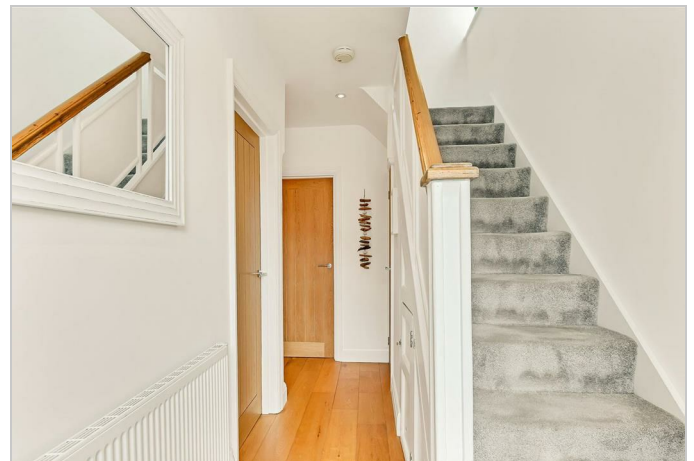


## Energy Efficiency Graph



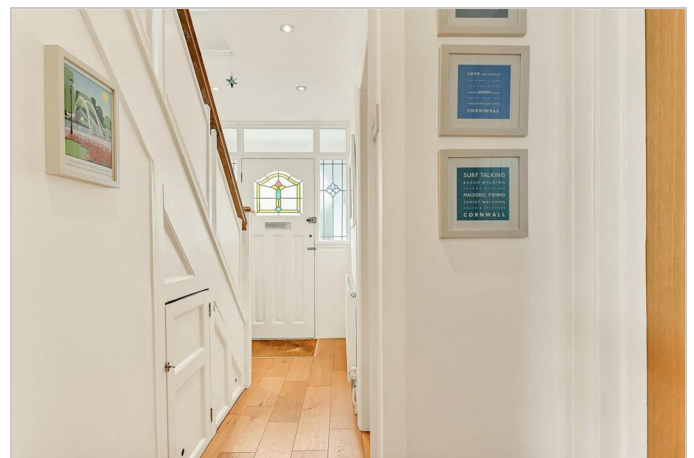
## Viewing

Please contact our Bedford Office on 01234 216612 if you wish to arrange a viewing appointment for this property or require further information.



This well-presented traditional 1930's semi detached home occupies a popular position within the 'Castle Quarter' and offers extended and adaptable accommodation in ready-to-move-into condition. The adaptable ground floor offers the flexibility of either separate, self contained rooms or one large open plan family space. The front sitting room has a bay window and solid fuel burner and the extended kitchen/dining room has plenty of storage and workspace as well as a bright sunny seating area in front of the sliding patio doors. There is also a useful ground floor WC. There are three bedrooms and a modern first floor bathroom with a shower over the bath. Further features include hard wood flooring on the ground floor, replaced doors throughout and uPVC double glazed windows. Outside, there is off road parking to the front, a side storage area with two timber sheds and a mature, well-kept garden which enjoys a sunny south facing aspect.

Rosamond Road is situated within popular Castle Road area, with a choice of amenities close by including pub/restaurants, cafes and specialist shops such as a butchers, florist and home-improvement stores. The area is also home to Russell Park, The Embankment and the highly-regard Castle Newnham Primary School. Bedford town centre is a short walk away and offers a wider choice of shops as well as fast rail links into London St Pancras. EER: D



163 Castle Road, MK40 3RT

Tel: 01234 216612

[www.hollandsmith.co.uk](http://www.hollandsmith.co.uk)