



Martin Avenue, Denmead Waterlooville PO7 6NS

welcome to

Martin Avenue, Denmead Waterlooville

Well-presented three bed extended semi-detached property in sought after Denmead, offering flexible family living with driveway, garage, modern kitchen/diner, spacious rear lounge and private garden, close to schools and amenities.

Entrance Hall

Laminate flooring, radiator. Doors to:

Bedroom Three

Double glazed window to front aspect. Laminate flooring, radiator.

Lounge

Double glazed window to side aspect. Skylight to ceiling. Double glazed sliding patio doors to rear garden. Two radiators, laminate flooring, spotlights. Through to kitchen/diner.

Kitchen / Diner

Double glazed windows to side aspect. Range of wall and base units with work surface over incorporating one and a half bowl sink unit with mixer tap over. Built-in double oven, electric hob with extractor hood over. Space for dishwasher. Laminate flooring, radiator, spotlights. Ample space for table and chairs.

Utility Room / Bedroom Four

Double glazed window to front aspect. Currently being used as a utility room. Space for fridge/freezer and washing machine. Laminate flooring, radiator.

Shower Room

Double glazed window to side aspect. Low level WC, pedestal wash hand basin and corner shower cubicle. Tiled walls and floor, radiator.

First Floor Landing

Bedroom One

Double glazed window to rear aspect. Built-in wardrobe, carpet flooring, radiator. Door to walk-in wardrobe and en-suite.

En-Suite

Walk-in wardrobe with carpet flooring and access to loft space. Through to en-suite which comprises a panel enclosed bath with shower over, low level WC and wash hand basin set over vanity unit. Tiled walls, radiator.

Bedroom Two

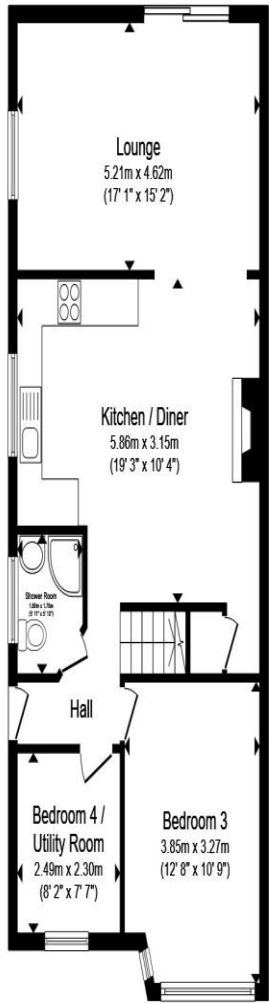
Double glazed window to front aspect. Carpet flooring, built-in wardrobe, radiator, eaves storage.

Outside Front

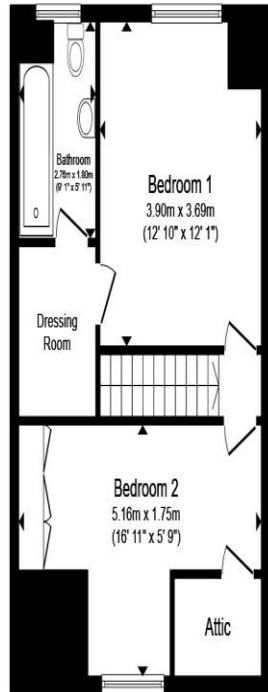
Shingle to the front proving an off road parking space. Shared drive leading to garage with up and over door.

Rear Garden

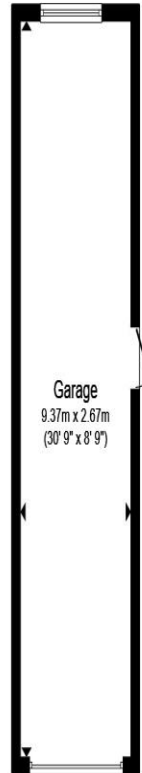
Laid to decking and lawn with mature shrubs and trees. Personal door to garage.



Ground Floor



First Floor



Garage

Total floor area 143.4 m² (1,544 sq.ft.) approx

This floor plan is for illustrative purposes only. It is not drawn to scale. Any measurements, floor areas (including any total floor area), openings and orientation are approximate. No details are guaranteed, they cannot be relied upon for any purpose and they do not form part of any agreement. No liability is taken for any error, omission or misstatement. A party must rely upon its own inspection(s). Powered by www.propertybox.io



welcome to
Martin Avenue,
Denmead Waterlooville

- Extended Semi-Detached Property
- Three Bedrooms
- Driveway & Garage
- Modern Kitchen/Diner
- Two Bathrooms

Tenure: Freehold EPC Rating: C
Council Tax Band: D

£425,000



view this property online fox-and-sons.co.uk/Property/WLV109719



Property Ref:
WLV109719 - 0004

1. MONEY LAUNDERING REGULATIONS Intending purchasers will be asked to produce identification documentation at a later stage and we would ask for your co-operation in order that there is no delay in agreeing the sale. 2. These particulars do not constitute part or all of an offer or contract. 3. The measurements indicated are supplied for guidance only and as such must be considered incorrect. Potential buyers are advised to recheck measurements before committing to any expense. 4. We have not tested any apparatus, equipment, fixtures or services and it is in the buyers interest to check the working condition of any appliances. 5. Where an EPC, or a Home Report (Scotland only) is held for this property, it is available for inspection at the branch by appointment. If you require a printed version of a Home Report, you will need to pay a reasonable production charge reflecting printing and other costs. 6. We are not able to offer an opinion either written or verbal on the content of these reports and this must be obtained from your legal representative. 7. Whilst we take care in preparing these reports, a buyer should ensure that his/her legal representative confirms as soon as possible all matters relating to title including the extent and boundaries of the property and other important matters before exchange of contracts.

Fox & Sons is a trading name of Sequence (UK) Limited which is registered in England and Wales under company number 4268443, Registered Office is Cumbria House, 16-20 Hockliffe Street, Leighton Buzzard, Bedfordshire, LU7 1GN. VAT Registration Number is 500 2481 05.

fox & sons



023 9226 2447



Waterlooville@fox-and-sons.co.uk



81B London Road, WATERLOOVILLE,
Hampshire, PO7 7ES



fox-and-sons.co.uk