



PRIORY GROVE, SW8

£2,500,000

- Early Victorian Italianate
- Five bedrooms
- Over 3,000 sq. ft
- Grade II listed
- South facing walled garden
- Off-street parking

 6  4  3



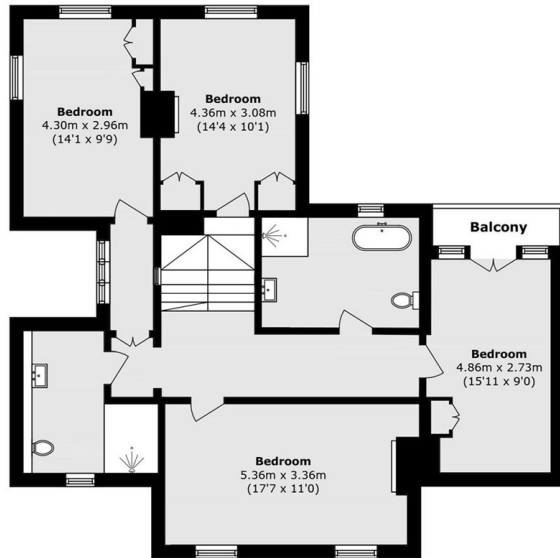
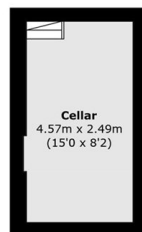
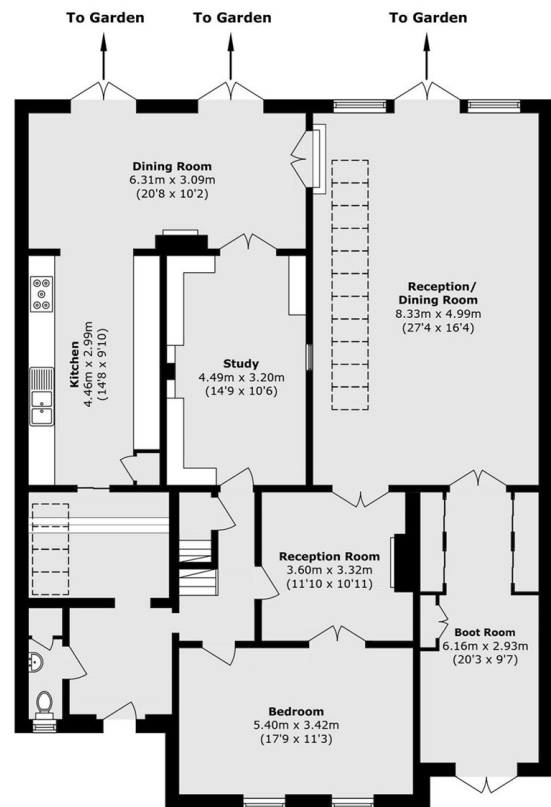
## ABOUT THE HOME

A rare and distinguished early Victorian residence in the heart of the Larkhall Park Conservation Area. Occupying a prominent position on one of the area's most desirable residential roads, this exceptional detached Victorian Italianate family home extends to over 3,000 sq ft and blends outstanding architectural grandeur and period character with contemporary family living.

Approached via a secure gated entrance, the property enjoys a wonderful sense of privacy and exclusivity. Beautifully proportioned accommodation is arranged over multiple levels, with elegant reception spaces, generous bedroom accommodation and an abundance of natural light throughout. The house showcases many of the features associated with its Victorian heritage, while providing the scale and flexibility required for modern family life. The property currently offers five bedrooms, making it ideally suited to growing families or home working, guest accommodation or leisure use. Externally, a highlight is the beautifully enclosed south facing walled garden, providing a tranquil and private setting for outdoor entertaining and relaxation. Further benefits include valuable off-street parking and the security of a gated entrance.






**First Floor**

**Basement**

**Ground Floor**

Total area (approx.): 282.4 sq. m (3039.7 sq. ft)

Balcony Total (approx.): 1.2 sq. m (12.9 sq. ft)

### JACKSONS CLAPHAM

73 Abbeville Road, London,  
SW4 9JN

Sales: 020 8487 3177

Lettings: 020 8487 3178

Energy Rating: We aim to make our particulars both accurate and reliable. However they are not guaranteed; nor do they form part of an offer or contract. If you require clarification on any points then please contact us, especially if you're traveling some distance to view. Please note that appliances and heating systems have not been tested and therefore no warranties can be given as to their good working order.