



Goldsmith Avenue, W3

£1,269 pw (£5,500 pcm)

A magnificent family home situated on one of Acton's most desirable and sought after roads. The house is arranged over three floors with four bedrooms and three bathrooms. This stunning family home also offers a fully extended kitchen/diner area leading through to a well maintained private garden.

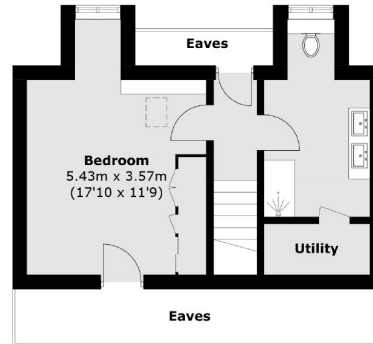


Goldsmith Avenue further benefits from two separate reception rooms, large master bedroom leading to a walk in wardrobe and into an ensuite bathroom.

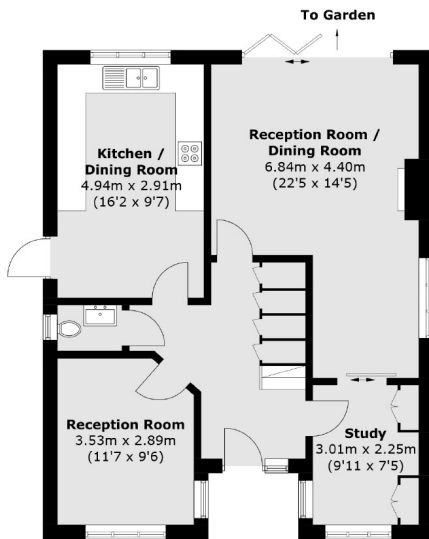
Goldsmith Avenue is within half a mile of both Acton Central and the new Elizabeth Line station, Acton Main Line as well as the shops and amenities of Churchfield Road.

- Four Bedrooms • Three Bathrooms • Well Maintained Garden •
 - Contemporary Design • Poets Corner • Private Garden •
-

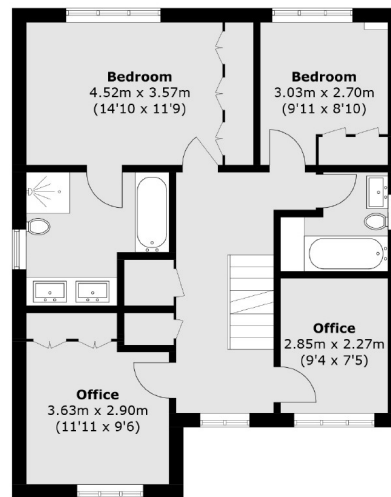




Second Floor



Ground Floor



First Floor

Total area (approx.): 172.4 sq. m (1,855.6 sq. ft)
(Excluding Eaves)

Robertson Smith & Kempson Acton
137 High Street, Acton,
London, W3 6LY
020 8896 3967
actonlettings@robertsonsmithandkempson.co.uk

Energy Rating: D. We aim to make our particulars both accurate and reliable. However they are not guaranteed; nor do they form part of an offer or contract. If you require clarification on any points then please contact us, especially if you're traveling some distance to view. Please note that appliances and heating systems have not been tested and therefore no warranties can be given as to their good working order.