

# FLETCHERS

ESTATE AGENTS



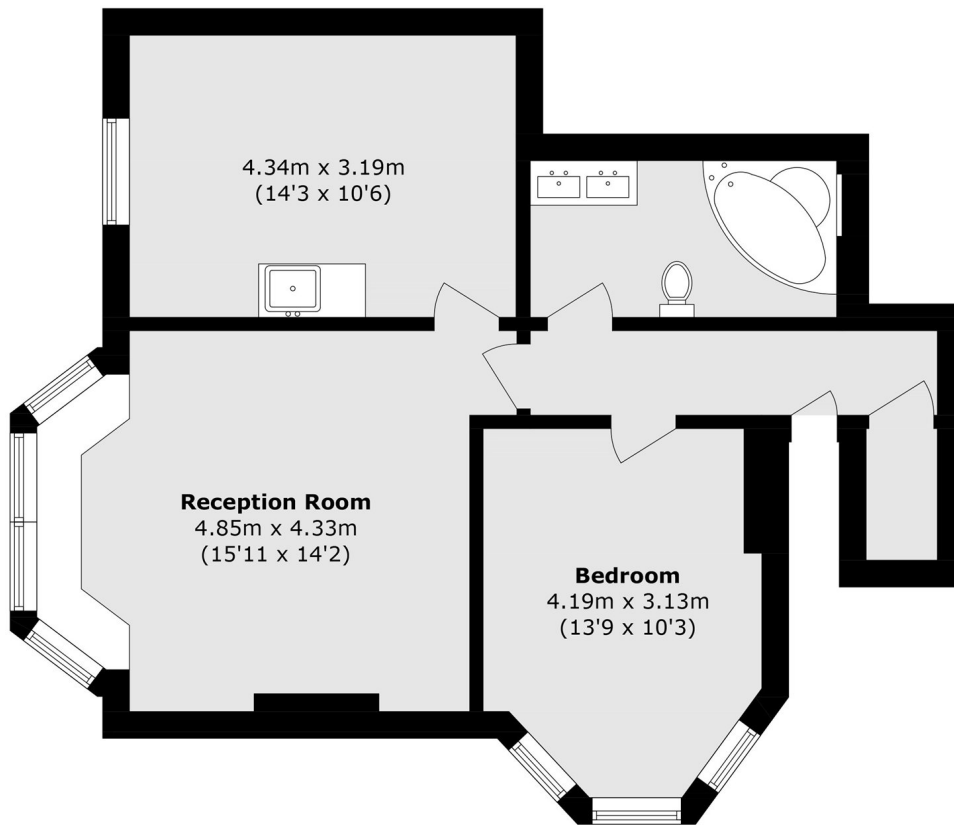
## Prebend Gardens, W6

£510,000

This bright and spacious one-bedroom flat is in a fantastic location, just moments from Stamford Brook station and a short stroll from the cafés, restaurants and independent shops of Turnham Green Terrace. With a private garden, large windows and plenty of living space, the flat has a great feel throughout. There's also excellent potential to convert it into a two-bedroom property, making it an exciting opportunity for anyone looking to put their own stamp on a home and add value over time.

Excellent transport links are on your doorstep, with Stamford Brook station nearby and frequent bus services along Bath Road and Chiswick High Road providing easy access into Central London. Conveniently the A4 is also within easy reach, making journeys to Heathrow Airport and straightforward.

- One Bedroom • 999 Year Lease • Private Garden • Close To Stations • Bay Windows • Bright And Airy •



Total area (approx.): 59.7 sq. m (642.6 sq. ft)

Fletchers Chiswick Turnham Green Sales  
58 Turnham Green Terrace, London, W4 1QP  
020 8987 3000  
[chiswicksales@fletcherestates.com](mailto:chiswicksales@fletcherestates.com)

Energy Rating: C. We aim to make our particulars both accurate and reliable. However they are not guaranteed; nor do they form part of an offer or contract. If you require clarification on any points then please contact us, especially if you're traveling some distance to view. Please note that appliances and heating systems have not been tested and therefore no warranties can be given as to their good working order.