

Mike
Dobson



15 Eversley Court

Sherburn In Elmet, Leeds, LS25 6BP

£235,000

15 Eversley Court

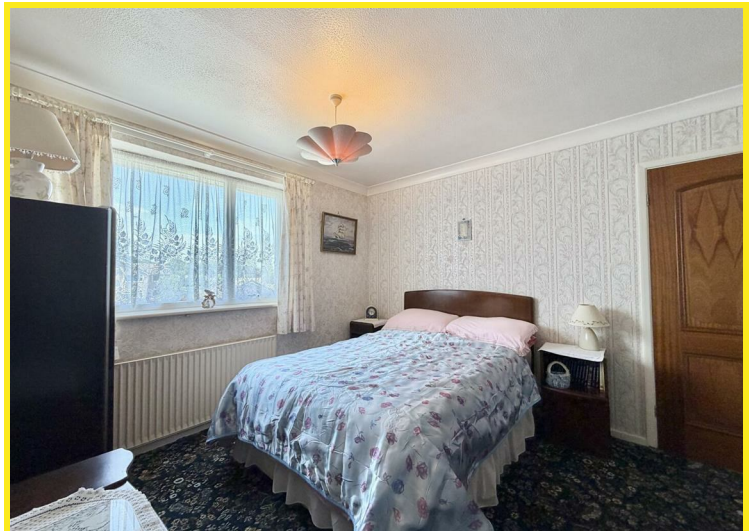
Situated in the charming Eversley Court, Sherburn In Elmet, this delightful three-bedroom semi-detached house presents an excellent opportunity for those seeking a home with potential. With no onward chain, you can move in and start making it your own without delay.

Upon entering, you are welcomed by a spacious hallway that leads to a large lounge/diner, perfect for family gatherings or entertaining guests. The room is bathed in natural light, thanks to the patio doors that open onto the rear garden, creating a seamless connection between indoor and outdoor living. The fitted kitchen, while bright and functional, offers ample storage and is ready for your personal touch.

The property boasts two generously sized double bedrooms and a single bedroom, making it ideal for families or those needing extra space for guests or a home office. The half-tiled bathroom features a charming pink suite.

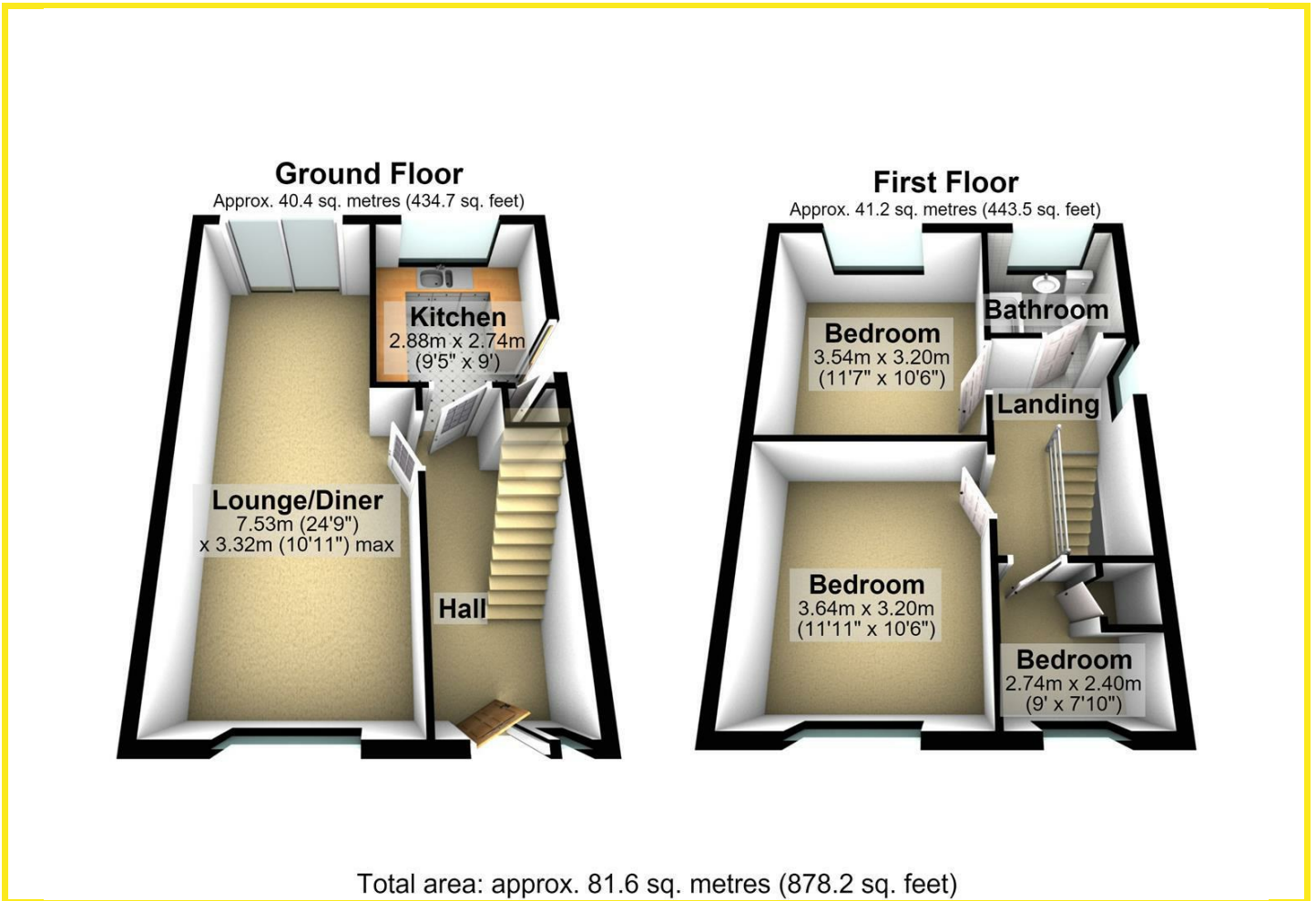
Outside, the good-sized garden is a true highlight, featuring a patio area for al fresco dining and a lawn adorned with established shrubs and trees, providing a tranquil retreat. Additionally, the property includes a single detached garage and a driveway secured by gates.

Situated in a quiet and sought-after area, this home is conveniently close to local amenities and reputable schools, making it an ideal choice for families. With a little modernisation, this property has the potential to become a truly wonderful family home. Don't miss the chance to view this lovely house and envision the possibilities it holds.





Floor Plan



Area Map



Energy Efficiency Graph

Energy Efficiency Rating		Current	Potential
Very energy efficient - lower running costs			
(92 plus)	A		
(81-91)	B		
(69-80)	C		
(55-68)	D		
(39-54)	E		
(21-38)	F		
(1-20)	G		
Not energy efficient - higher running costs			
England & Wales		EU Directive 2002/91/EC	

Directions

From our Sherburn in Elmet office, turn left onto Low Street. Take the second turning right onto Eversley Garth Crescent. Follow the road round onto Deighton Avenue which in turn becomes Eversley Court. The property can be found on the right hand side as indicated by the agents board.

These particulars, whilst believed to be accurate are set out as a general outline only for guidance and do not constitute any part of an offer or contract. Intending purchasers should not rely on them as statements of representation of fact, but must satisfy themselves by inspection or otherwise as to their accuracy. No person in this firm's employment has the authority to make or give any representation or warranty in respect of the property.

98 Wolsey Croft, Sherburn in Elmet, LS25 6DP
Tel: 01977 684258 Email: sherburn@mdboson.co.uk <https://www.mdboson.co.uk>