



Roundhedge Way, Enfield EN2 8LD

welcome to

Roundhedge Way, Enfield

Superb chain free top floor two double bedroom apartment in this sought after development adjacent to and with delightful views over greenbelt countryside with walking distance of Gordon Hill Rail Station (Moorgate Line) and within easy access of Enfield Town. Garage & Share Of Freehold!



Communal Hallway

With entryphone and access to rear communal garden, stairs lead up to the third (Top Floor).

Hallway

Fitted carpet, large cupboard housing the central heating boiler and meters. Additional utility cupboard with plumbing for washing machine and space for dryer, loft hatch opening to loft storage space.

Kitchen

9' 8" x 6' 6" (2.95m x 1.98m)

Range of fitted wall and base units with toning worktops, sink and drainer, gas hob with oven beneath and extractor above, tiled splash backs and tiled floor, space for fridge/freezer, double glazed window to rear with views.

Lounge

26' 1" x 11' 4" (7.95m x 3.45m)

Fitted carpet, dual aspect with double glazed window to rear and sliding double glazed doors to front with Juliet balcony, two radiators.

Bedroom 1

13' 1" x 12' 8" (3.99m x 3.86m)

Fitted carpet, two floor to ceiling double glazed window to side, radiator, fitted wardrobes.

Bedroom 2

12' 8" x 7' 9" (3.86m x 2.36m)

Fitted carpet, double glazed window to front, radiator,

Shower Room

Large step in shower unit, hand basin with cupboards beneath, wc, chrome heated towel rail, fully tiled walls and floor, double glazed window to side.

Outside

Communal Gardens

Pleasant communal gardens surround the block with views over Greenbelt land.

Garage

Single garage with up and over door en bloc adjacent to the main building.



view this property online barnfields.co.uk/Property/ENF106028



welcome to

Roundhedge Way, Enfield

- Two Double Bedrooms
- Top Floor
- Modern Fitted Kitchen and Shower Room
- 26Ft Lounge
- Loft Storage Space

Tenure: Leasehold EPC Rating: C

Council Tax Band: E Service Charge: 1850.00

Ground Rent: Ask Agent

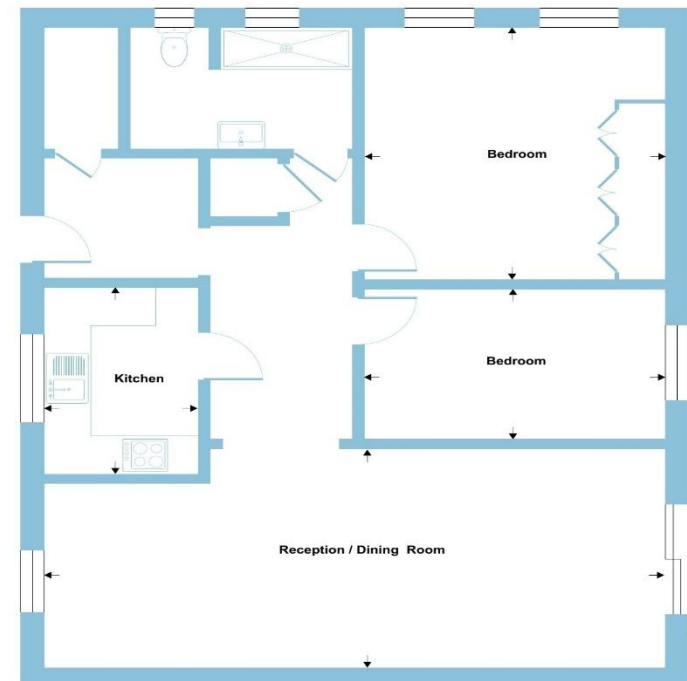
This is a Leasehold property with details as follows; Term of Lease 999 years from 29 Sep 1992. Should you require further information please contact the branch. Please Note additional fees could be incurred for items such as Leasehold packs.

£350,000



Roundhedge Way, Enfield, EN2

Approximate Area = 875 sq ft / 81.2 sq m
For identification only - Not to scale



THIRD FLOOR

Floor plan produced in accordance with RICS Property Measurement 2nd Edition, Incorporating International Property Measurement Standards (IPMS2 Residential). © nichecom 2026. Produced for Barnard Marcus. REF: 1480306



Please note the marker reflects the postcode not the actual property

check out more properties at [barnfields.co.uk](https://www.barnfields.co.uk)



Property Ref:
ENF106028 - 0002

1. MONEY LAUNDERING REGULATIONS Intending purchasers will be asked to produce identification documentation at a later stage and we would ask for your co-operation in order that there is no delay in agreeing the sale. 2. These particulars do not constitute part or all of an offer or contract. 3. The measurements indicated are supplied for guidance only and as such must be considered incorrect. Potential buyers are advised to recheck measurements before committing to any expense. 4. We have not tested any apparatus, equipment, fixtures or services and it is in the buyers interest to check the working condition of any appliances. 5. Where an EPC, or a Home Report (Scotland only) is held for this property, it is available for inspection at the branch by appointment. If you require a printed version of a Home Report, you will need to pay a reasonable production charge reflecting printing and other costs. 6. We are not able to offer an opinion either written or verbal on the content of these reports and this must be obtained from your legal representative. 7. Whilst we take care in preparing these reports, a buyer should ensure that his/her legal representative confirms as soon as possible all matters relating to title including the extent and boundaries of the property and other important matters before exchange of contracts.

Barnfields is a trading name of Sequence (UK) Limited which is registered in England and Wales under company number 4268443, Registered Office is Cumbria House, 16-20 Hockliffe Street, Leighton Buzzard, Bedfordshire, LU7 1GN. VAT Registration Number is 500 2481 05.

Not for marketing purposes INTERNAL USE ONLY



020 8363 3394



info@barnfields.com



1a Windmill Hill, Enfield, Middlesex, EN2 6SE



[barnfields.co.uk](https://www.barnfields.co.uk)