



**Hayward
Tod**

2 bedroom Detached Bungalow | 11 Grosvenor Place | Carlisle | CA3 9LL
Guide Price £225,000





A well-presented two-bedroom detached bungalow with attractive, low-maintenance landscaped gardens and a private rear aspect. Tucked away on a quiet no-through road in a highly sought-after location just north of the city, the property offers a peaceful setting while remaining conveniently close to everyday amenities. Scenic riverside walks and an excellent range of shops are within easy reach in Stanwix, making this an ideal home for those seeking both peace and convenience.

ACCOMMODATION SUMMARY

Hall | Sitting room | Kitchen | Front double bedroom one | Rear double bedroom two with access to Conservatory | Bathroom | Forecourt garden | Driveway | Parking | Garage | Small private rear garden | All mains' services | Gas central heating | Council Tax Band - C | EPC rating - E | Freehold

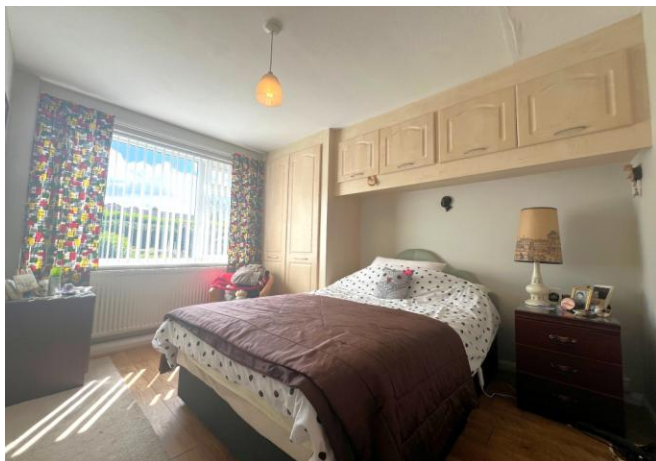
APPROXIMATE MILEAGES

Sainsbury's Local 0.6 | Morrisons 0.6 | Central Carlisle - West Coast Main Line Station 1.6 | M6 J44 North 1.8, J43 South 3 | Solway Coast AONB - Bowness on Solway 13.5 | Lake District National Park - Caldbeck 14.6, Pooley Bridge Ullswater 25.6 | Hadrian's Wall UNESCO Site - Birdoswald Fort 16.7 | Newcastle International Airport 57



WHY GROSVENOR PLACE?

Conveniently placed yet tucked away within a quiet cul de sac in a sought-after northern suburb close to river and parkland walks and with easy access to city centre just a mile and half away by car and only a mile on foot via the River Eden. There are a good range of amenities just up the road in Stanwix including two pubs, a bar and takeaways. Morrisons and Aldi supermarkets are only a short distance away by car.



Floor plan to follow

Contact

6 Paternoster Row,
Carlisle Cumbria CA3 8TT

01228 810 300
info@haywardtd.co.uk
haywardtd.co.uk

Agents note

Whilst every care has been taken to prepare these sales particulars, they are for guidance purposes only. All measurements are

approximate and are for general guidance purposes only and whilst every care has been taken to ensure their accuracy, they should not be relied upon and potential buyers are advised to recheck the measurements.