



Connells

Reeves Croft
Hodge Lea Milton Keynes



Property Description

Connells is pleased to bring to the market this 3 bedroom end terrace property benefiting from a separate kitchen, family bathroom and a private front and rear garden. The property is conveniently located for local amenities, schools, green spaces and transport links including the nearby Wolverton railway station.

With no onward chain this property is ideal for first time buyers, investors and families alike.

Entrance Hall

Cloakroom

WC and Sink

Kitchen / Dining Room

Window to front. Range of wall and base units, Space for appliances. Stainless steel sink and drainer.

Living Room

door to rear garden.

Bedroom 1

Window to side.

Bedroom 2

Window to side.

Bedroom 3

Window to side.

Bathroom

Bath with over head shower. WC and Sink. Window to front.

Outside

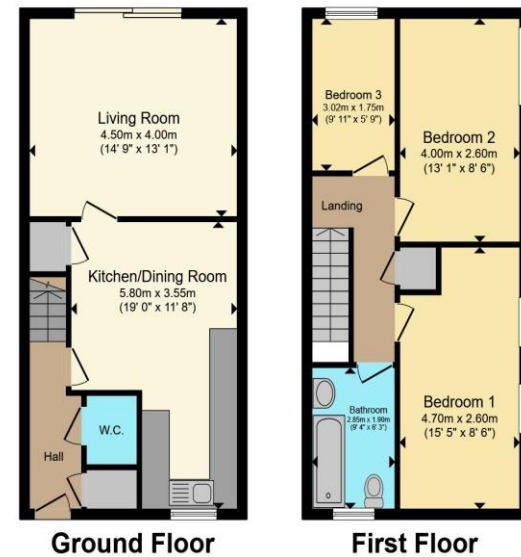
Front Garden

Laid to artificial grass, gate to access.

Rear Garden

Mainly laid to lawn.





Total floor area 89.1 m² (959 sq.ft.) approx

This floor plan is for illustrative purposes only. It is not drawn to scale. Any measurements, floor areas (including any total floor area), openings and orientation are approximate. No details are guaranteed, they cannot be relied upon for any purpose and they do not form part of any agreement. No liability is taken for any error, omission or misstatement. A party must rely upon its own inspection(s). Powered by www.propertybox.io



To view this property please contact Connells on

T 01908 563 993
E stonystratford@connells.co.uk

82 High Street Stony Stratford
MILTON KEYNES MK11 1AH

EPC Rating: C Council Tax
Band: B

Tenure: Freehold

[check out more properties at connells.co.uk](http://connells.co.uk)



1. MONEY LAUNDERING REGULATIONS Intending purchasers will be asked to produce identification documentation at a later stage and we would ask for your co-operation in order that there will be no delay in agreeing the sale. 2. These particulars do not constitute part or all of an offer or contract. 3. The measurements indicated are supplied for guidance only and as such must be considered incorrect. Potential buyers are advised to recheck measurements before committing to any expense. 4. We have not tested any apparatus, equipment, fixtures, fittings or services and it is in the buyers interest to check the working condition of any appliances.

Connells Residential is registered in England and Wales under company number 1489613, Registered Office is Cumbria House, 16-20 Hockliffe Street, Leighton Buzzard, Bedfordshire, LU7 1GN. VAT Registration Number is 500 2481 05.

See all our properties at www.connells.co.uk | www.rightmove.co.uk | www.zoopla.co.uk

Property Ref: SSD307896 - 0002