



Connells

Bellingdon Road
Chesham



Property Description

Combining period charm with modern comforts, this beautifully presented terraced cottage is ideally located in Chesham, just a short ten-minute walk from the town centre and Metropolitan Line station, providing direct access into London.

Rich in character and thoughtfully updated for modern living, the property opens into a bright and welcoming reception room, featuring a bay window that floods the space with natural light, a cosy fireplace, and the added benefit of underfloor heating, creating a warm and inviting atmosphere throughout.

To the rear, the spacious kitchen/breakfast/family room forms the heart of the home. Beautifully designed, it offers a range of wall and base units, an integrated oven and hob, ample space for dining and relaxing, and underfloor heating for enhanced comfort. Stairs rise to the first floor, while double doors provide seamless access to the rear garden, making it ideal for both everyday living and entertaining.

Upstairs, the property offers a generous principal bedroom, a second bedroom ideal for guests, a nursery or home office, and a well-appointed family bathroom comprising a bath with shower over, WC and wash basin.

Externally, the fully enclosed rear garden provides a delightful outdoor retreat, with a decked seating area, lawn, and a useful brick-built storage shed. Perfect for relaxing, entertaining, or enjoying warmer days, the garden offers an attractive extension of the living space.

Reception Room

11' 10" max x 10' 5" max (3.61m max x 3.17m max)

Kitchen/Breakfast/Family Room

24' 5" max x 8' 8" max (7.44m max x 2.64m max)

Bedroom One

10' 5" max x 9' 11" max (3.17m max x 3.02m max)

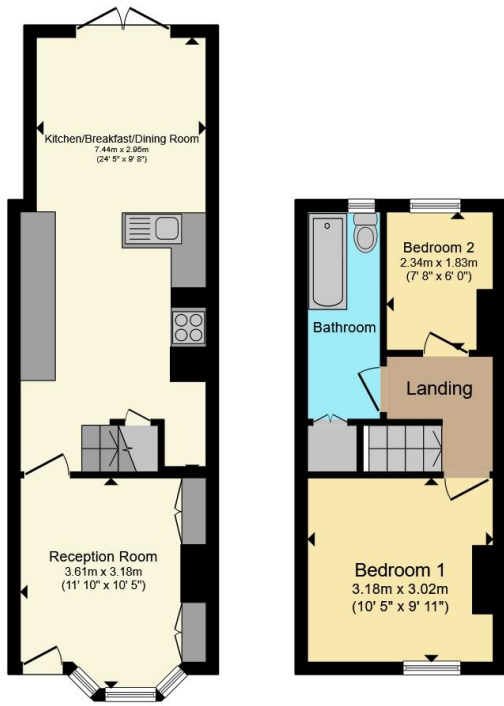
Bedroom Two

7' 8" max x 6' max (2.34m max x 1.83m max)

Bathroom

11' 6" max x 4' 1" max (3.51m max x 1.24m max)





Ground Floor

First Floor

Total floor area 58.3 m² (627 sq.ft.) approx

This floor plan is for illustrative purposes only. It is not drawn to scale. Any measurements, floor areas (including any total floor area), openings and orientation are approximate. No details are guaranteed, they cannot be relied upon for any purpose and they do not form part of any agreement. No liability is taken for any error, omission or misstatement. A party must rely upon its own inspection(s). Powered by www.propertybox.io



To view this property please contact Connells on

T 01494 534 822
E highwycombe@connells.co.uk

1-3 Queen Victoria Road
 HIGH WYCOMBE HP11 1BA

EPC Rating: C Council Tax
 Band: C

view this property online connells.co.uk/Property/WYC313443

Tenure: Freehold



1. MONEY LAUNDERING REGULATIONS Intending purchasers will be asked to produce identification documentation at a later stage and we would ask for your co-operation in order that there will be no delay in agreeing the sale. 2. These particulars do not constitute part or all of an offer or contract. 3. The measurements indicated are supplied for guidance only and as such must be considered incorrect. Potential buyers are advised to recheck measurements before committing to any expense. 4. We have not tested any apparatus, equipment, fixtures, fittings or services and it is in the buyers interest to check the working condition of any appliances.

Connells Residential is registered in England and Wales under company number 1489613, Registered Office is Cumbria House, 16-20 Hockliffe Street, Leighton Buzzard, Bedfordshire, LU7 1GN. VAT Registration Number is 500 2481 05.

See all our properties at www.connells.co.uk | www.rightmove.co.uk | www.zoopla.co.uk

Property Ref: WYC313443 - 0012