



Connells

Salisbury Walk
Corby



Property Description

Situated in a highly desirable residential area of Corby, this thoughtfully laid-out four-bedroom family home offers generous living accommodation across two floors and further benefits from a private rear garden, making it an ideal purchase for growing families.

The ground floor is arranged around a central entrance hall which provides access to all principal rooms. To the front of the property is a spacious living room, offering an inviting space for everyday family living. To the front, a separate dining room is perfectly suited for family meals and entertaining. The kitchen/breakfast room provides ample space for both cooking and casual dining and is complemented by a separate utility room, adding valuable practicality. A convenient downstairs WC completes the ground floor accommodation.

To the first floor, the property offers four well-proportioned bedrooms, arranged around a central landing. The principal bedroom benefits from its own en-suite shower room, while the remaining bedrooms are served by a modern family bathroom. The layout provides flexibility for families, home working, or guest accommodation.

Externally, the property enjoys a private rear garden, offering a safe and secure space for children to play as well as an ideal setting for outdoor dining and relaxation.

Ground Floor

Entrance Hall

Entrance door to the rear, stairs to the first floor, radiator, carpet flooring.

Lounge

Window to the front, French patio doors and windows to the rear, carpet flooring, radiator.

Dining Room

Window to the front, carpet flooring, radiator.

Kitchen

Window to the rear, a range of wall and base units with rolled edge work surfaces, 1.5 sink drainer with mixer tap, integrated oven and hob with cooker hood, space for fridge freezer and dishwasher, tiled splash backs, laminate flooring, radiator.

Utility Room

External door to the rear, base unit with rolled edge work surface, sink drainer with mixer tap, tiled splash back, space for washing machine.

First Floor

Landing

Airing cupboard.

Bedroom One

Window to the rear, carpet flooring, radiator.

Ensuite

Window to the rear, walk in shower cubicle, wash hand basin, low level WC, tiled splash backs, radiator.

Bedroom Two

Window to the rear, carpet flooring, radiator.

Bedroom Three

Window to the front, carpet flooring, radiator.

Bedroom Four

Window to the front, built in storage cupboard, radiator, carpet flooring.

Bathroom

Window to the front, bath with mixer tap and shower attachment, wash hand basin, low level WC, tiled splash backs, radiator.

Externally

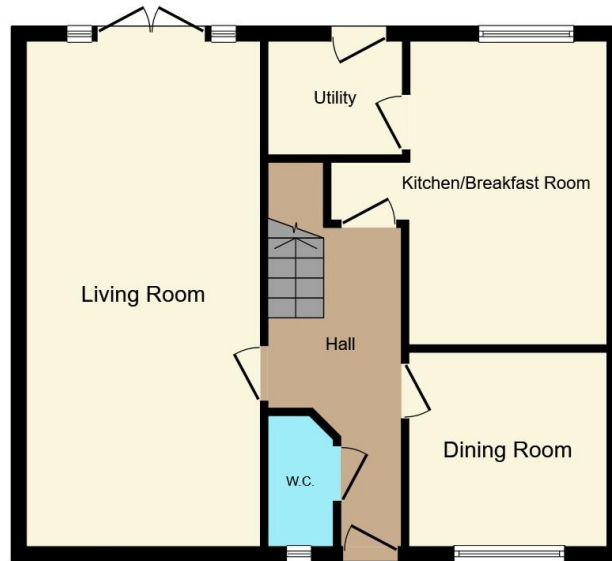
Rear Garden

Fully enclosed by timber fencing, gated side access, laid to lawn.

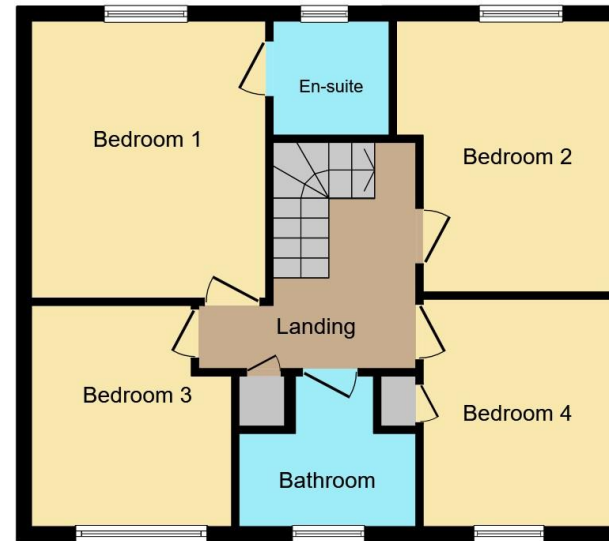








Ground Floor



First Floor

This floor plan is for illustrative purposes only. It is not drawn to scale. Any measurements, floor areas (including any total floor area), openings and orientation are approximate. No details are guaranteed, they cannot be relied upon for any purpose and they do not form part of any agreement. No liability is taken for any error, omission or misstatement. A party must rely upon its own inspection(s). Powered by www.propertybox.io



To view this property please contact Connells on

T 01536 747320
E oakleyvale@connells.co.uk

10 Charter Court Butland Road Oakley Vale
CORBY NN18 8QT

EPC Rating: C Council Tax
Band: E

Tenure: Freehold

view this property online connells.co.uk/Property/OKV307800



1. MONEY LAUNDERING REGULATIONS Intending purchasers will be asked to produce identification documentation at a later stage and we would ask for your co-operation in order that there will be no delay in agreeing the sale. 2. These particulars do not constitute part or all of an offer or contract. 3. The measurements indicated are supplied for guidance only and as such must be considered incorrect. Potential buyers are advised to recheck measurements before committing to any expense. 4. We have not tested any apparatus, equipment, fixtures, fittings or services and it is in the buyers interest to check the working condition of any appliances.

Connells Residential is registered in England and Wales under company number 1489613, Registered Office is Cumbria House, 16-20 Hockliffe Street, Leighton Buzzard, Bedfordshire, LU7 1GN. VAT Registration Number is 500 2481 05.

See all our properties at www.connells.co.uk | www.rightmove.co.uk | www.zoopla.co.uk

Property Ref: OKV307800 - 0006