



Ynysmeudwy Road £210,000

- Three Bedroom Detached Property
- Generous Size Reception Rooms
- Three Reception Rooms
- Two Bathrooms
- Driveway
- Large Rear Garden
- EPC Rating: Awaited



 4  2  1



About the property

Situated in a highly desirable location within Pontardawe, this spacious detached family home offers versatile accommodation arranged over three floors, making it an ideal purchase for growing families or those seeking flexible living space.

The property boasts three well-proportioned bedrooms, with the potential to create a fourth bedroom, alongside three generous reception rooms that provide excellent space for family living, entertaining, or home working. The accommodation is complemented by a fitted kitchen and two bathrooms, ensuring practicality for modern family life.

Set across three floors. A lower ground floor, ground floor, and first floor, the property offers a versatile layout that can be adapted to suit a variety of lifestyles. The lower ground floor provides additional living space with numerous potential uses, subject to individual requirements.

Externally, the property benefits from a private driveway providing off-road parking and a substantial rear garden, offering an excellent outdoor space for families, gardening enthusiasts, or those who enjoy entertaining.





Accommodation

Porch

Lounge - 26' 11" x 16' 8" (8.20m x 5.08m)

Kitchen - 16' 8" x 12' 3" (5.08m x 3.73m)

Bedroom One - 14' 9" x 10' (4.50m x 3.05m)

Bedroom Two - 14' 11" x 7' 11" (4.55m x 2.41m)

Bathroom - 8' 7" x 6' 7" (2.62m x 2.01m)

Hallway

Shower Room - 9' 7" x 4' 4" (2.92m x 1.32m)

Lounge Two - 15' x 14' 6" (4.57m x 4.42m)

Lounge Three - 11' 5" x 9' 9" (3.48m x 2.97m)

Utility - 9' 11" x 7' 5" (3.02m x 2.26m)

Study - 9' 3" x 6' 11" (2.82m x 2.11m)

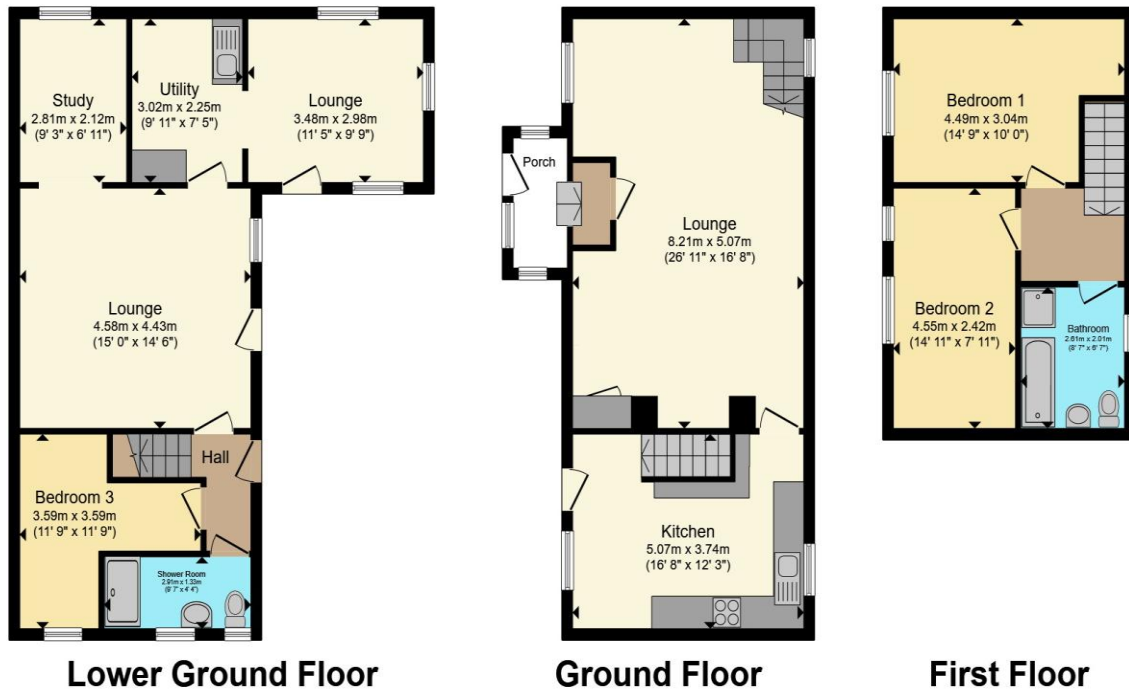
Bedroom Three - 11' 9" x 11' 9" (3.58m x 3.58m)
Driveway

Rear Garden

01792 798201

bridgend@peteralan.co.uk

Floorplan



Total floor area 147.8 m² (1,591 sq.ft.) approx

This floor plan is for illustrative purposes only. It is not drawn to scale. Any measurements, floor areas (including any total floor area), openings and orientation are approximate. No details are guaranteed, they cannot be relied upon for any purpose and they do not form part of any agreement. No liability is taken for any error, omission or misstatement. A party must rely upon its own inspection(s). Powered by www.propertybox.io

Important Information

Note while we endeavour to make our sales details accurate and reliable, if there is any point which is of particular interest to you, please contact the office and we will be pleased to confirm the position for you. We have not personally tested any apparatus, equipment, fixtures, fittings or services and cannot verify they are in working order or fit for their purposes. Nothing in these particulars is intended to indicate that carpets or curtains, furnishings or fittings, electrical goods (whether wired or not). Gas fires or light fittings or any other fixtures not expressly included form part of the property offered for sale. This computer generated Floorplan, if applicable, is intended as a general guide to the layout and design of the property. It is not to scale and should not be relied upon for dimensions. Tenure: We cannot confirm the tenure of the property as we have not had access to the legal documents. The buyer is advised to obtain verification from their solicitor or surveyor.

Peter Alan Limited is registered in England and Wales under company number 2073153, Registered Office is Cumbria House, 16-20 Hockliffe Street, Leighton Buzzard, Bedfordshire, LU7 1GN. VAT Registration Number is 500 2481 05. For activities relating to regulated mortgages and non-investment insurance contracts, Peter Alan Limited is an appointed representative of Connells Limited which is authorised and regulated by the Financial Conduct Authority. Connells Limited's Financial Services Register number is 302221. Most buy-to-let