



Connells

Bakersfield
Longwell Green BRISTOL



Property Description

The centre of Longwell Green has a Tesco convenience store with post office, supermarket, various takeaways, public house, village hall and primary school. Gallagher Retail Park some 1.5 miles away has a good range of outlets including Marks and Spencer, Boots, B&Q and Asda Superstore as well as being adjacent to the Bristol Ring Road and Aspects Leisure Park and Cinema.

Keynsham Railway Station is 2 miles away with the Town itself providing a good range of amenities while the City of Bristol which offers facilities on a regional scale is some 5.5 miles away The UNESCO World Heritage City of Bath is 8 miles to the east.

The centre of Longwell Green has a Tesco convenience store with post office, supermarket, various takeaways, public house, village hall and primary school. Gallagher Retail Park some 1.5 miles away has a good range of outlets including Marks and Spencer, Boots, B&Q and Asda Superstore as well as being adjacent to the Bristol Ring Road and Aspects Leisure Park and Cinema.

Keynsham Railway Station is 2 miles away with the Town itself providing a good range of amenities while the City of Bristol which offers facilities on a regional scale is some 5.5 miles away The UNESCO World Heritage City of Bath is 8 miles to the east.

The centre of Longwell Green has a Tesco convenience store with post office,

supermarket, various takeaways, public house, village hall and primary school. Gallagher Retail Park some 1.5 miles away has a good range of outlets including Marks and Spencer, Boots, B&Q and Asda Superstore as well as being adjacent to the Bristol Ring Road and Aspects Leisure Park and Cinema.

Keynsham Railway Station is 2 miles away with the Town itself providing a good range of amenities while the City of Bristol which offers facilities on a regional scale is some 5.5 miles away The UNESCO World Heritage City of Bath is 8 miles to the east.

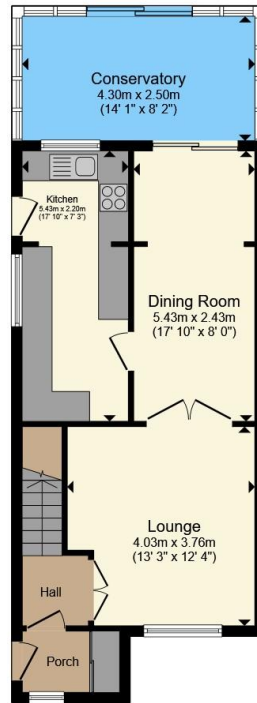
The centre of Longwell Green has a Tesco convenience store with post office, supermarket, various takeaways, public house, village hall and primary school. Gallagher Retail Park some 1.5 miles away has a good range of outlets including Marks and Spencer, Boots, B&Q and Asda Superstore as well as being adjacent to the Bristol Ring Road and Aspects Leisure Park and Cinema.

Keynsham Railway Station is 2 miles away with the Town itself providing a good range of amenities while the City of Bristol which offers facilities on a regional scale is some 5.5 miles away The UNESCO World Heritage City of Bath is 8 miles to the east.

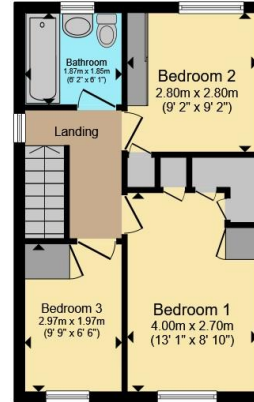








Ground Floor



First Floor

Total floor area 95.1 m² (1,024 sq.ft.) approx

This floor plan is for illustrative purposes only. It is not drawn to scale. Any measurements, floor areas (including any total floor area), openings and orientation are approximate. No details are guaranteed, they cannot be relied upon for any purpose and they do not form part of any agreement. No liability is taken for any error, omission or misstatement. A party must rely upon its own inspection(s). Powered by www.propertybox.io



To view this property please contact Connells on

T 0117 932 8684
E longwellgreen@connells.co.uk

131 Bath Road Longwell Green
 BRISTOL BS30 9DD

EPC Rating: C Council Tax
 Band: C

Tenure: Freehold

view this property online connells.co.uk/Property/BLG104510



1. MONEY LAUNDERING REGULATIONS Intending purchasers will be asked to produce identification documentation at a later stage and we would ask for your co-operation in order that there will be no delay in agreeing the sale. 2. These particulars do not constitute part or all of an offer or contract. 3. The measurements indicated are supplied for guidance only and as such must be considered incorrect. Potential buyers are advised to recheck measurements before committing to any expense. 4. We have not tested any apparatus, equipment, fixtures, fittings or services and it is in the buyers interest to check the working condition of any appliances.

Connells Residential is registered in England and Wales under company number 1489613, Registered Office is Cumbria House, 16-20 Hockliffe Street, Leighton Buzzard, Bedfordshire, LU7 1GN. VAT Registration Number is 500 2481 05.

See all our properties at www.connells.co.uk | www.rightmove.co.uk | www.zoopla.co.uk

Property Ref: BLG104510 - 0003