



Connells

Welsury Road
Torquay



Property Description

BEAUTIFUL FOUR-BEDROOM DETACHED FAMILY HOME WITH FAR-REACHING VIEWS

Situated in a desirable residential location, this beautifully presented four-bedroom detached family home offers spacious and modern living throughout, complemented by generous gardens, excellent parking, and attractive elevated views across Torquay and the surrounding countryside.

The property enjoys a particularly convenient location within easy walking distance of Torbay Hospital, making it ideal for healthcare professionals and families alike. A wide range of supermarkets, local shops, schools, and everyday amenities are also close by, while major retail parks and Torquay town centre are easily accessible.

Entrance Hallway

Upon entering the property, you are welcomed by a bright and inviting entrance hallway with useful built-in storage.

Lounge

The ground floor offers excellent living space, including a spacious and light-filled lounge with double doors opening directly onto the rear garden, creating seamless indoor-outdoor living ideal for both relaxing and entertaining. The elevated position enjoys far-reaching views across Torquay and the surrounding countryside. Reflective privacy glazing throughout the property softens direct sunlight, reduces glare, and provides excellent daytime privacy without compromising the outlook.

Kitchen/Dining Room

The contemporary kitchen and dining room is

fitted with a range of modern units, premium granite worktop, and generous preparation space, creating a stylish and practical heart of the home.

Utility Room

A separate utility room provides additional storage and appliance space, helping keep the main kitchen area organised and uncluttered.

Downstairs Wc

A convenient and well-presented ground-floor cloakroom completes the downstairs accommodation.

Principal Bedroom

A generously proportioned principal bedroom enjoying attractive elevated views across Torquay. The room benefits from a modern en-suite shower room and reflective privacy glazing, creating a calm and relaxing atmosphere while maintaining excellent daytime privacy.

Ensuite

A stylish and contemporary en-suite shower room fitted with quality fixtures and finished to a modern standard.

Bedroom Two

A bright and spacious double bedroom with ample room for a double bed and additional furniture. The room enjoys attractive open views across neighbouring farmland, creating a peaceful and semirural outlook.

Bedroom Three

Another well-proportioned double bedroom filled with natural light and comfortably accommodating a double bed along with wardrobes and storage furniture. The window overlooks open farmland, providing attractive green views and a wonderful sense of privacy.

Bedroom Four

A versatile fourth bedroom capable of accommodating a double bed, making it ideal as a guest bedroom, child's room, study, or home office.

Family Bathroom

The contemporary family bathroom is fully tiled and fitted with a modern four-piece suite comprising a bath, separate shower, wash basin, and WC.

Garden

Externally, the property enjoys a generous L-shaped garden offering excellent outdoor space for relaxation, entertaining, and family activities. An elevated section of the garden enjoys superb far-reaching views across Torquay and the surrounding countryside, creating a wonderful sense of openness and privacy.

Garage

The property benefits from a substantial garage with fitted electrical supply, providing excellent space for secure parking, storage, a workshop, or hobby area.

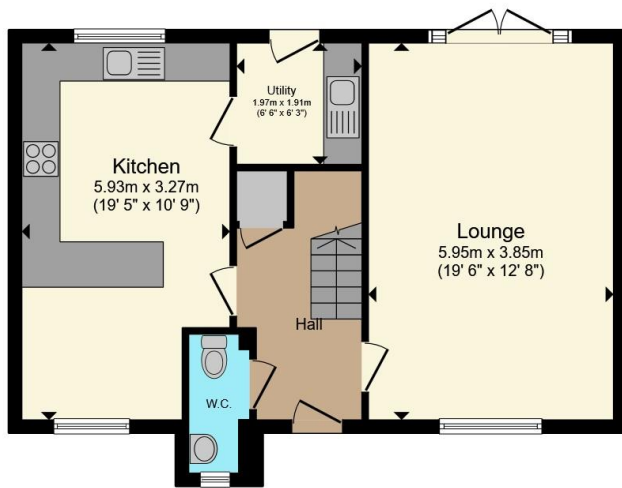
Parking

In addition to the garage, the property benefits from private off-road parking for two vehicles on the driveway.

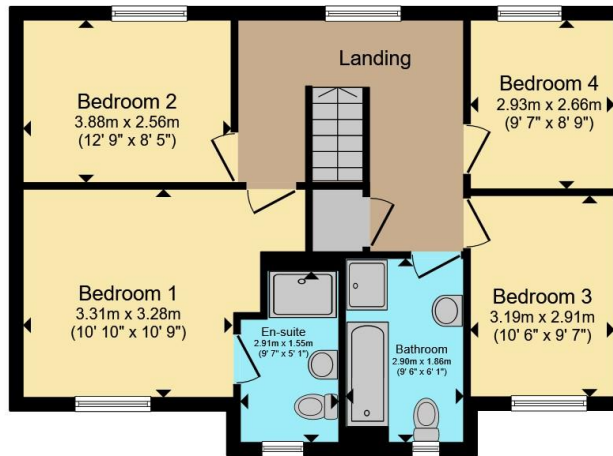
Location

The property is ideally positioned within walking distance of Torbay Hospital, local supermarkets, shops, schools, and everyday amenities. Major retail parks, shopping facilities, and Torquay town centre are all easily accessible, combining convenience with an attractive residential setting.





Ground Floor



First Floor



Total floor area 113.5 m² (1,222 sq.ft.) approx

This floor plan is for illustrative purposes only. It is not drawn to scale. Any measurements, floor areas (including any total floor area), openings and orientation are approximate. No details are guaranteed, they cannot be relied upon for any purpose and they do not form part of any agreement. No liability is taken for any error, omission or misstatement. A party must rely upon its own inspection(s). Powered by www.propertybox.io



To view this property please contact Connells on

T 01803 213 641
E torquay@connells.co.uk

115 Union Street
 TORQUAY TQ1 3DW

EPC Rating: B Council Tax
 Band: E

view this property online connells.co.uk/Property/TQY315071

Tenure: Freehold



1. MONEY LAUNDERING REGULATIONS Intending purchasers will be asked to produce identification documentation at a later stage and we would ask for your co-operation in order that there will be no delay in agreeing the sale. 2. These particulars do not constitute part or all of an offer or contract. 3. The measurements indicated are supplied for guidance only and as such must be considered incorrect. Potential buyers are advised to recheck measurements before committing to any expense. 4. We have not tested any apparatus, equipment, fixtures, fittings or services and it is in the buyers interest to check the working condition of any appliances.

Connells Residential is registered in England and Wales under company number 1489613, Registered Office is Cumbria House, 16-20 Hockliffe Street, Leighton Buzzard, Bedfordshire, LU7 1GN. VAT Registration Number is 500 2481 05.

See all our properties at www.connells.co.uk | www.rightmove.co.uk | www.zoopla.co.uk

Property Ref: TQY315071 - 0008