



Connells

Springbrook Road
Nuneaton



Property Description

Spacious Family Home in a Popular Residential Location

Located within a well-established and sought-after residential area of Nuneaton, offers generous living accommodation, a private garden, and excellent access to local amenities.

Ideal for families, first-time buyers, or investors, this home provides a practical layout and a convenient setting for modern living.

Situated in a popular residential neighbourhood close to local shops and amenities. Convenient access to Nuneaton town centre, offering a wide range of retail, dining and leisure facilities. Well positioned for local schools, making it ideal for families.

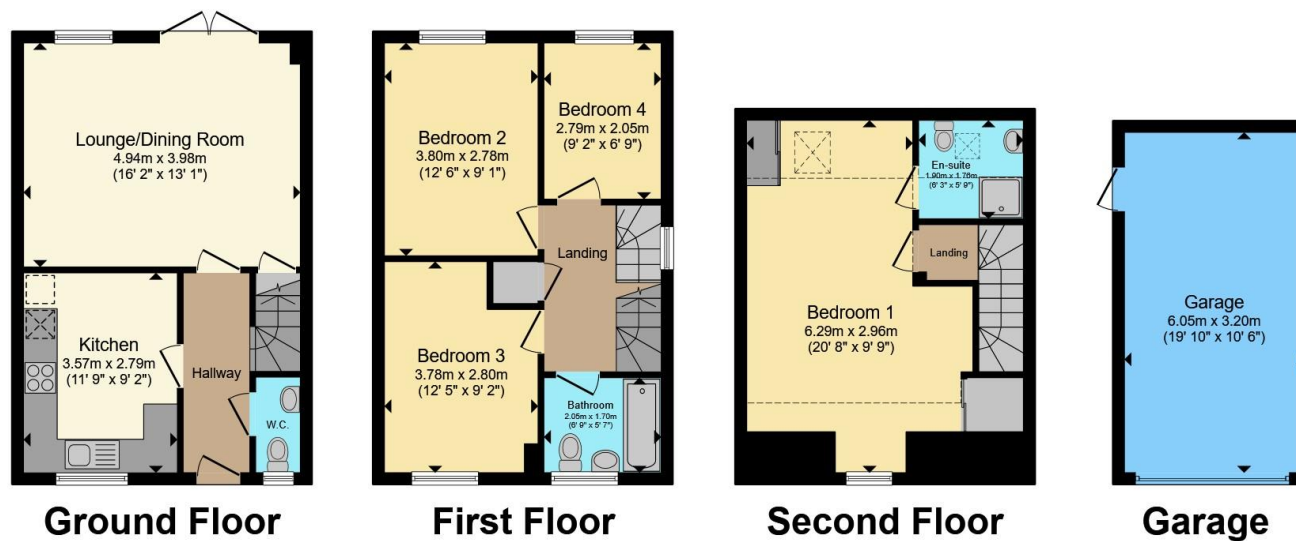
Excellent commuter links via the A444, A5, M6 and M69. Regular bus services nearby and easy access to Nuneaton railway station. Close to parks and green spaces for outdoor leisure and family activities.

Great opportunity to purchase a well-located home offering space, comfort and convenience. Early viewing is highly recommended.









Total floor area 126.1 m² (1,357 sq.ft.) approx

This floor plan is for illustrative purposes only. It is not drawn to scale. Any measurements, floor areas (including any total floor area), openings and orientation are approximate. No details are guaranteed, they cannot be relied upon for any purpose and they do not form part of any agreement. No liability is taken for any error, omission or misstatement. A party must rely upon its own inspection(s). Powered by www.propertybox.io



To view this property please contact Connells on

T 01455 230523
E hinckley@connells.co.uk

88 Castle Street
 HINCKLEY LE10 1DD

EPC Rating: B Council Tax
 Band: D

Tenure: Freehold

view this property online connells.co.uk/Property/HIN313652



1. MONEY LAUNDERING REGULATIONS Intending purchasers will be asked to produce identification documentation at a later stage and we would ask for your co-operation in order that there will be no delay in agreeing the sale. 2. These particulars do not constitute part or all of an offer or contract. 3. The measurements indicated are supplied for guidance only and as such must be considered incorrect. Potential buyers are advised to recheck measurements before committing to any expense. 4. We have not tested any apparatus, equipment, fixtures, fittings or services and it is in the buyers interest to check the working condition of any appliances.

Connells Residential is registered in England and Wales under company number 1489613, Registered Office is Cumbria House, 16-20 Hockliffe Street, Leighton Buzzard, Bedfordshire, LU7 1GN. VAT Registration Number is 500 2481 05.

See all our properties at www.connells.co.uk | www.rightmove.co.uk | www.zoopla.co.uk

Property Ref: HIN313652 - 0006