

for sale

£560,000



Mountbatten Park, Hoe Lane, North Baddesley, Southampton, SO52 9NH

This energy-efficient detached home blends with a traditional cottage impression, offering premium finishes throughout. Be welcomed by stylish open-plan living, garage and private driveway parking, set within a desirable village development.

Mountbatten Park, Hoe Lane, North Baddesley, Southampton, SO52 9NH

Specification

Kitchen

- o Stone worktops with matching upstands
- o Soft-close cupboards and drawers
- o Stainless steel undermount sink with chrome mixer tap
- o Integrated fridge/freezer and dishwasher
- o Single fan-assisted oven, combination microwave, induction hob with extractor
- o Breakfast bar

Bathrooms & En-Suite

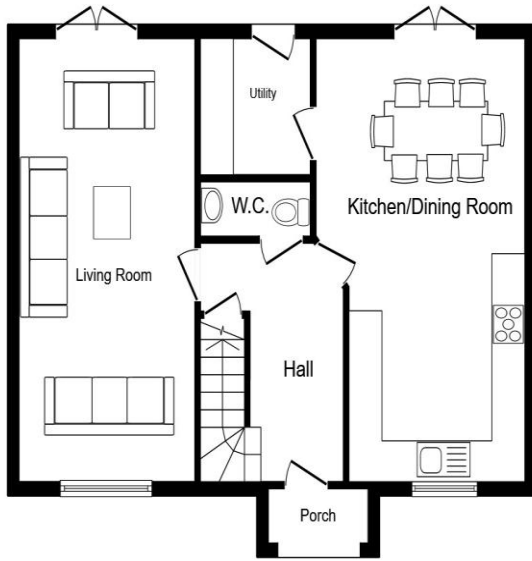
- o Contemporary white sanitaryware with chrome fittings
- o Porcelain wall tiling
- o Dual fuel heated towel rails
- o Shaver points

Interior Finishes

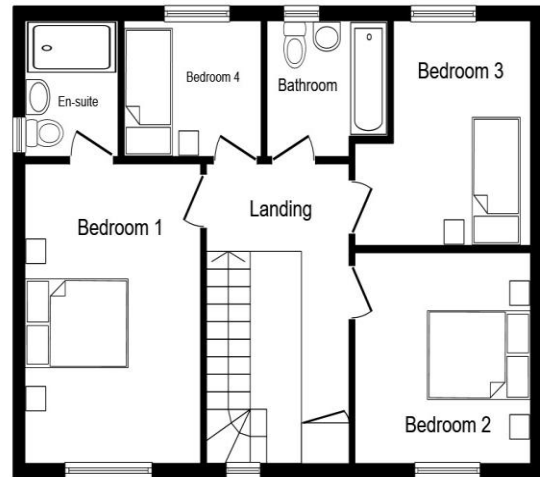
- o Oak handrails and newel posts with hand-painted spindles
- o USB charging points to kitchen and bedrooms
- o TV points to living room and principal bedroom







Ground Floor



First Floor

This floor plan is for illustrative purposes only. It is not drawn to scale. Any measurements, floor areas (including any total floor area), openings and orientations are approximate. No details are guaranteed, they cannot be relied upon for any purpose and do not form any part of any agreement. No liability is taken for any error, omission or misstatement. A party must rely upon its own inspection(s). Powered by www.Propertybox.io

To view this property please contact Connells on

T 01794 830 833
E romsey@connells.co.uk

13a The Hundred
 ROMSEY SO51 8GD

Property Ref: ROM307111 - 0001

Tenure:Freehold EPC Rating: Exempt

check out more properties at
connells.co.uk



1. MONEY LAUNDERING REGULATIONS Intending purchasers will be asked to produce identification documentation at a later stage and we would ask for your co-operation in order that there will be no delay in agreeing the sale. 2. These particulars do not constitute part or all of an offer or contract. 3. The measurements indicated are supplied for guidance only and as such must be considered incorrect. Potential buyers are advised to recheck measurements before committing to any expense. 4. We have not tested any apparatus, equipment, fixtures, fittings or services and it is in the buyers interest to check the working condition of any appliances.

Connells Residential is registered in England and Wales under company number 1489613, Registered Office is Cumbria House, 16-20 Hockliffe Street, Leighton Buzzard, Bedfordshire, LU7 1GN. VAT Registration Number is 500 2481 05.

see all our properties at www.connells.co.uk | www.rightmove.co.uk | www.zoopla.co.uk