

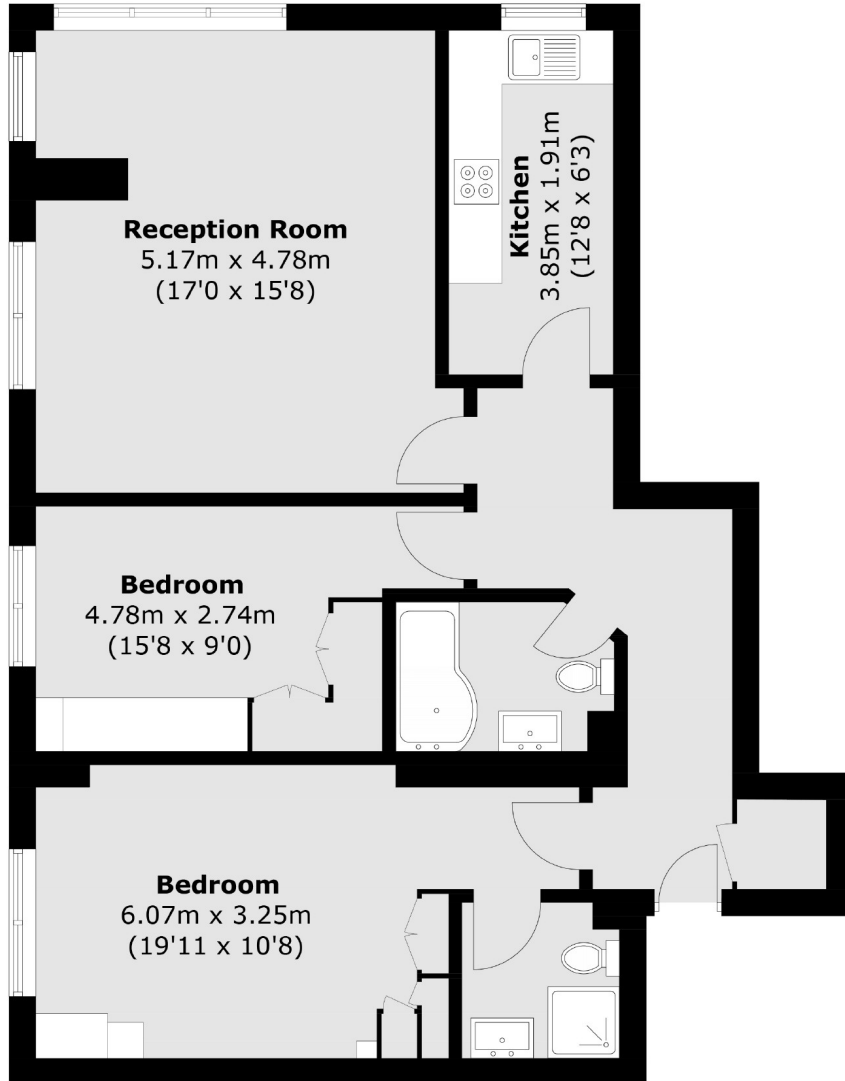


Brunswick Road, W5

£577 pw (£2,500 pcm)

A large two bedroom executive apartment set within a gated development with allocated underground parking, lift and a private gym. The property has a bright reception room with wooden flooring, separate kitchen and access to communal gardens.

Greystoke House is just off Brunswick Road close to Hanger Lane station. For the motorist, the A40 and A406 are very near.



Total area (approx.): 81.0 sq. m (871.9 sq. ft)

Robertson Smith & Kempson Ealing Lettings
1 The Broadway,
London, W5 2NT
020 8840 7885
ealinglettings@robertsonsmithandkempson.co.uk

Energy Rating: . We aim to make our particulars both accurate and reliable. However they are not guaranteed; nor do they form part of an offer or contract. If you require clarification on any points then please contact us, especially if you're traveling some distance to view. Please note that appliances and heating systems have not been tested and therefore no warranties can be given as to their good working order.