



Haslemere Road, Liphook, Hampshire
Asking Price £399,000 Leasehold

CLARKE  GAMMON

FLORA PLACE HASLEMERE ROAD
LIPHOOK HAMPSHIRE GU30 7UN

Asking Price £399,000

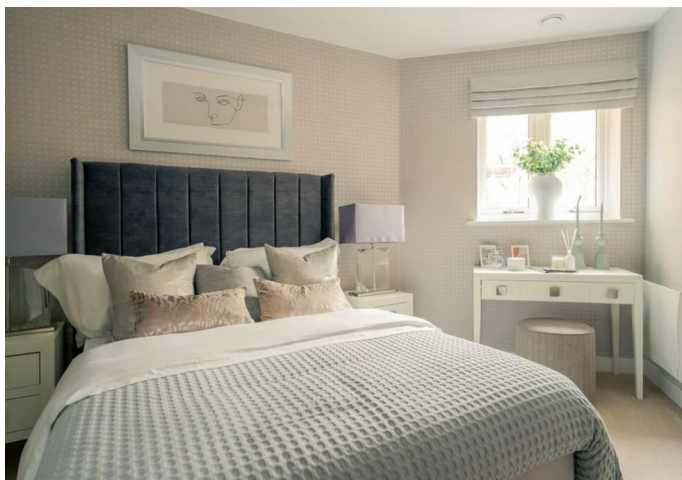
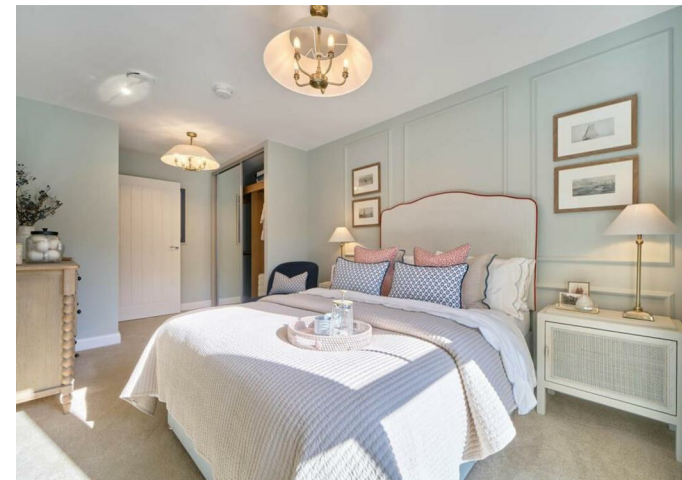
Retirement property for sale	Beautiful, energy saving, low maintenance over 60s
Stunning communal lounge	Guest suite
Lovely sociable shared landscaped gardens	amenities on the doorstep
spectacular 2 bedroom apartment in Liphook,	Pets allowed
24/7 call system	



A fantastic opportunity to buy a brand-new retirement apartment in the centre of Liphook Village.

THE PROPERTY- The photos are just an insight to the quality.

This spectacular 2 bedroom apartment in Liphook, Hampshire is part of the Flora Place development from the award-winning McCarthy Stone. A private retirement apartment, Apartment 32 is located on the second floor, is low-maintenance and contains extra safety features. See the exclusive benefits and highlights this property has to offer in the development information.



Location

Flora Place is just a few minutes stroll from the historic village square, which is dominated by the Royal Anchor Hotel and is a designated conservation area with some of the old houses and shops dating as far back as the 16th century. Liphook offers the best of country living with the convenience of amenities such as a bank, village surgery, a supermarket, post office and bus stop. There will be plenty to tickle your tastebuds with a mix of traditional pubs, small cafés and restaurants.

SITUATION

Retirement property for sale and retirement properties to rent in Liphook
Countryside living in the South Downs National Park with amenities on the doorstep
Beautiful, energy saving, low maintenance over 60s retirement housing for stress-free living
Dedicated manager onsite during office hours to help keep everything running smoothly

Village centre location
Sainsburys walkable
Doctor's Surgery walkable
Liphook main line station easy access
Haslemere 5 miles
Petersfield 8 miles
Guildford 14 miles
Portsmouth 28 miles

All distances approximate

33
786.99 SQFT
73.11 SQM




Bedroom 1 (Max)	5218mm x 2980mm	17.12 ft x 9.78 ft
En-Suite (Max)	2200mm x 2774mm	7.22 ft x 9.10 ft
Bedroom 2 (Max)	4000mm x 2828mm	13.12 ft x 9.28 ft
Kitchen (Max)	3275mm x 2451mm	10.74 ft x 8.04 ft
Living (Max)	5218mm x 3610mm	17.12 ft x 11.84 ft
Shower Room (Max)	2200mm x 1710mm	7.22 ft x 5.61 ft

LOCAL AUTHORITY
East Hants District Council

SERVICES
Mains water, electricity, mains drainage
gas central heating

16th June 2026

Energy Efficiency Rating		
	Current	Potential
Very energy efficient - lower running costs		
(92 plus) A		
(81-91) B		
(69-80) C		
(55-68) D		
(39-54) E		
(21-38) F		
(1-20) G		
Not energy efficient - higher running costs		
England & Wales	EU Directive 2002/91/EC 	

CG LIPHOOK OFFICE

2 MIDHURST ROAD, LIPHOOK, HAMPSHIRE, GU30 7ED

T: 01428 728900

E: liphook.sales@clarkegammon.co.uk

clarkegammon.co.uk

AGENT'S NOTE

Whilst we endeavour to make our sales particulars accurate and reliable, we wish to inform prospective purchasers that we have not carried out a detailed survey, nor tested the services, appliances and specific fittings. If there is any point which you would like to have further clarification upon, please contact this office.

ESTATE AGENTS CHARTERED SURVEYORS VALUERS LETTINGS AUCTIONEERS

GUILDFORD OFFICE
T: 01483 880 900

HASLEMERE OFFICE
T: 01428 664 800

LIPHOOK OFFICE
T: 01428 728 900

MAYFAIR OFFICE
T: 0870 112 7099

AUCTION ROOMS
T: 01483 223101

