



Danes Court 1 St Edmunds Terrace

St Johns Wood, London, NW8 7QR

Asking price £2,000,000

Stunning three-bedroom, three-bathroom apartment plus cloakroom. Situated on the sixth floor of this sought after block with lift. This beautifully bright apartment benefits from stunning views over Primrose Hill, Regent's Park and the City of London.

The apartment was partially refurbished earlier this year and the furniture is included in the sale (any items not required will be removed).

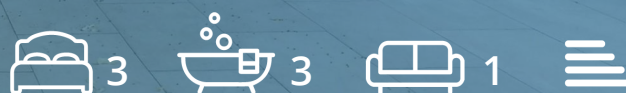
Danes Court is a well-maintained apartment building with resident porter and is superbly located opposite an entrance to Primrose Hill Park and is only a short walk from two underground stations - St John's Wood (Jubilee line) or Chalk Farm (Northern line).

Long Lease 967 years

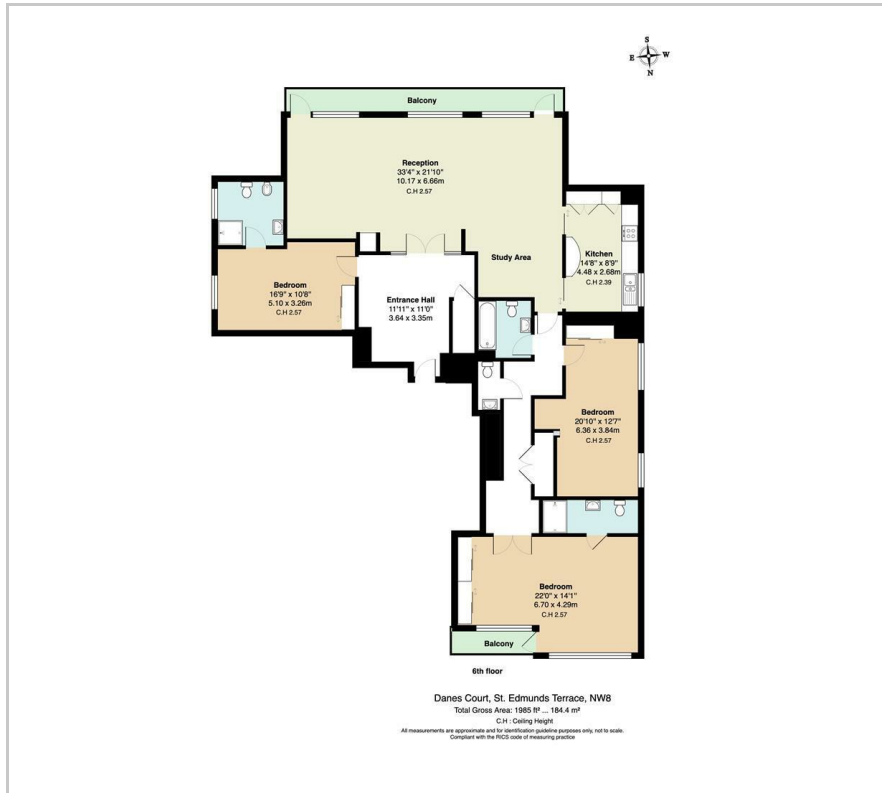
- 3 Bedrooms
- 3 Bathrooms
- 6th Floor
- Balcony
- Air-con
- Garage
- Porter
- Long Lease

Viewing

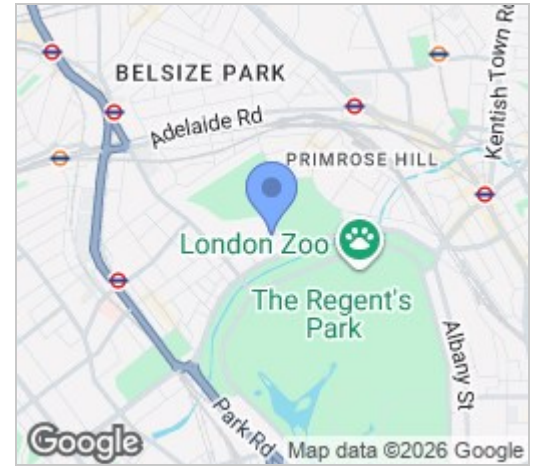
Please contact us on 020 3198 4517 if you wish to arrange a viewing appointment for this property or require further information.



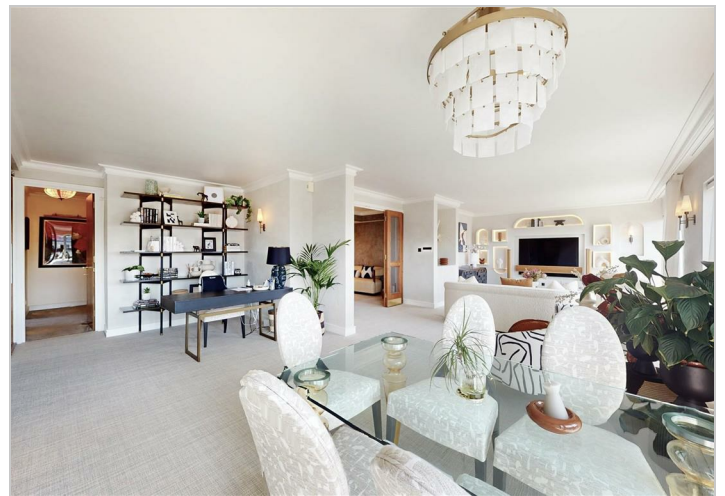
Floor Plan



Area Map



Energy Efficiency Graph



These particulars, whilst believed to be accurate are set out as a general outline only for guidance and do not constitute any part of an offer or contract. Intending purchasers should not rely on them as statements of representation of fact, but must satisfy themselves by inspection or otherwise as to their accuracy. No person in this firm's employment has the authority to make or give any representation or warranty in respect of the property.